

EXPLANATORY PLAN OF PART OF
DISTRICT LOT 5172
CARIBOO DISTRICT - BRITISH COLUMBIA

SCALE: 1" = 300'

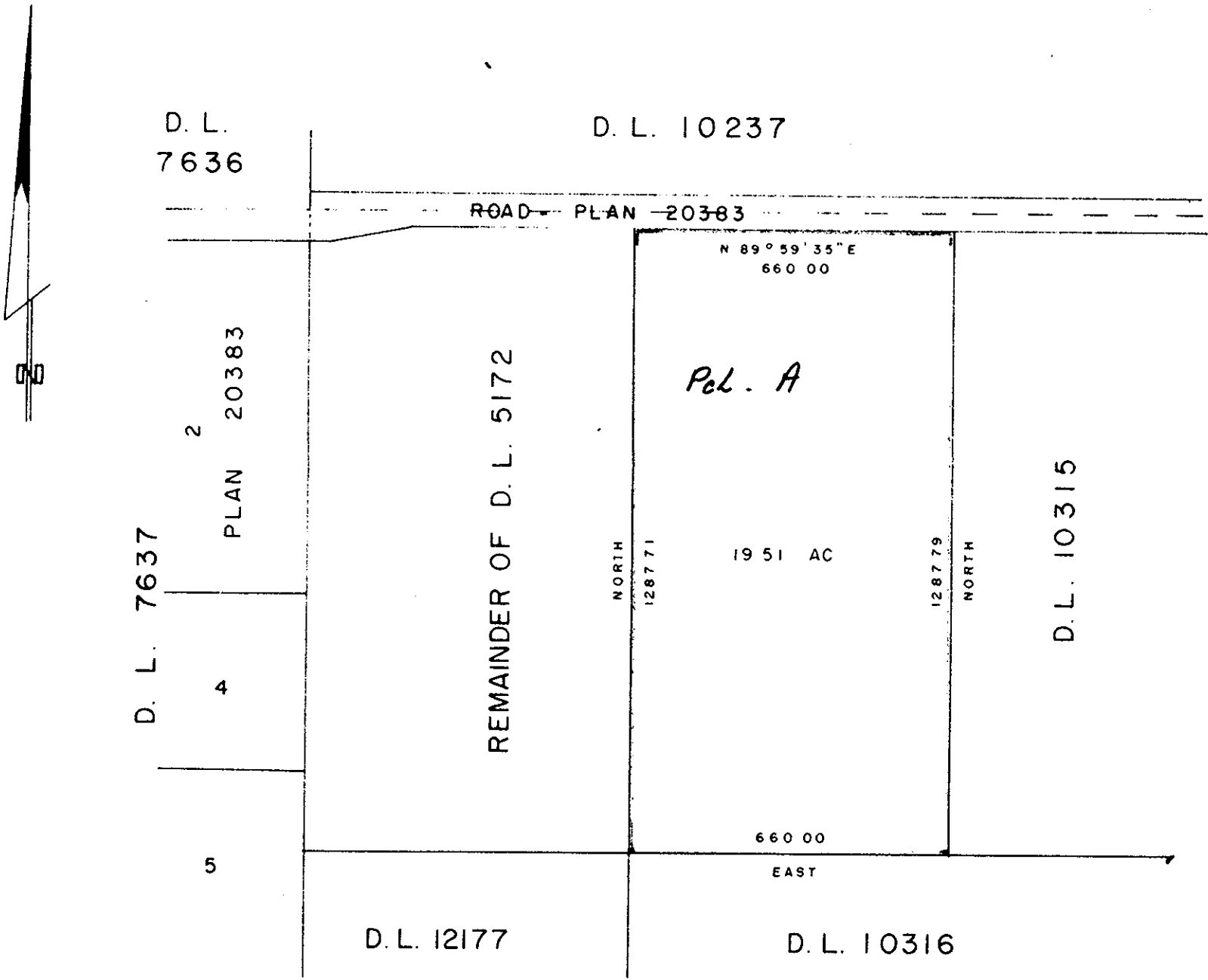
NOTE: Bearings are astronomic, derived from the north
boundary of D.L. 5172 as shown on Plan 20383.

PLAN No 23240

Deposited in the Land Registry
Office at Prince George, B.C. this
29 day of March, 1977.

"E. T. Schooley"
Registrar

*For L.C.A. Clearance see
M 5932*



CERTIFIED CORRECT
According to Plans of record in the
Prince George Land Registry Office.
This 21 day of JAN, 1977.

D E M Jenkins
Owner

Approved under the Land Registry Act
this 12 day of FEB, 1977