

RECEIVED  
APR 1 1977

PLAN OF SUBDIVISION OF  
LOT 1, PLAN 23039, LOT 1, PLAN 23218  
AND PART OF LOT B, PLAN 11110  
DISTRICT LOT 2424  
CARIBOO DISTRICT - BRITISH COLUMBIA

B.C. ASSESSMENT  
AUTHORITY

PLAN N<sup>o</sup> 23232

Deposited in the Land Registry  
Office at Prince George, B.C. this  
25 day of March, 1977

"E. T. Schooley"  
Registrar

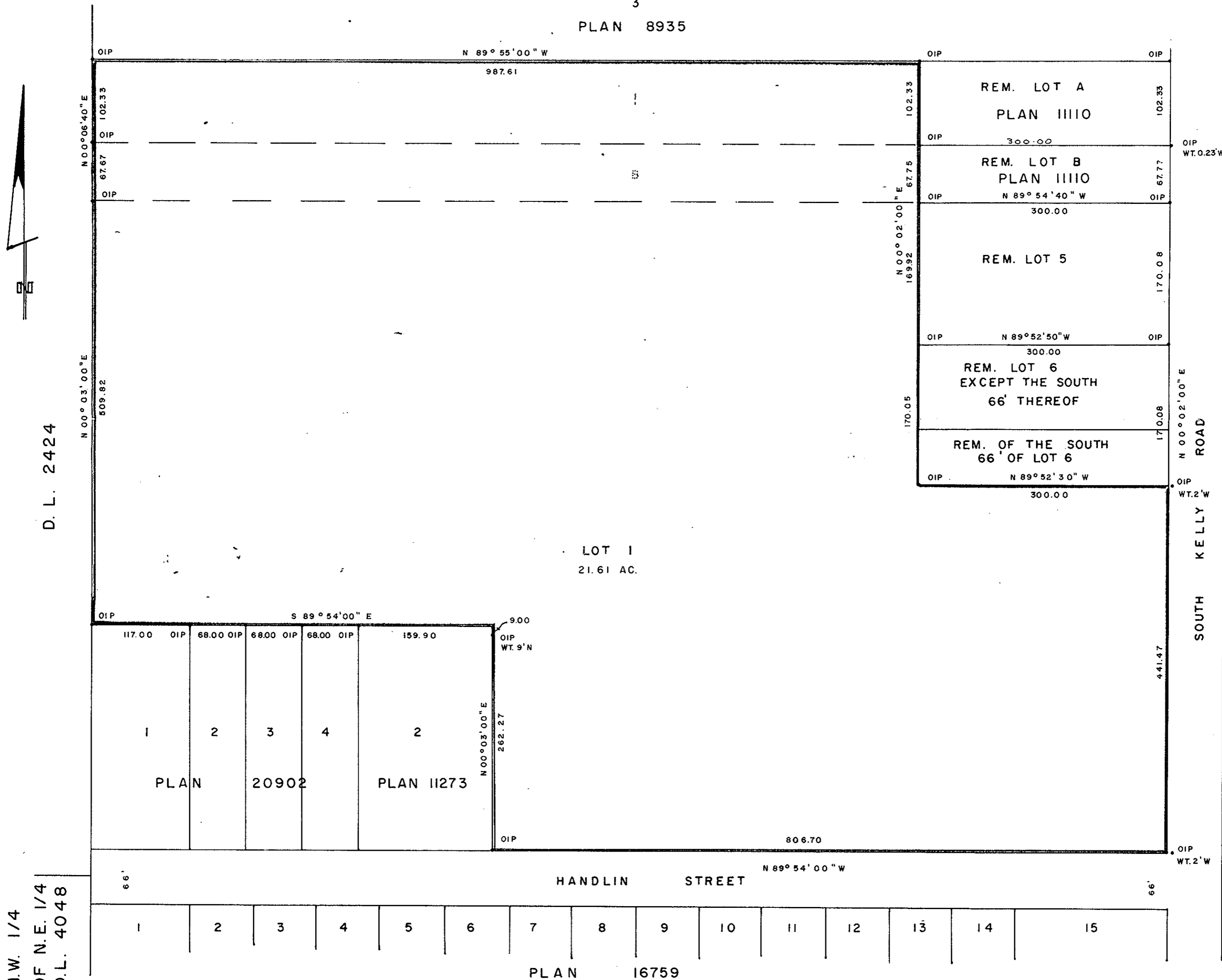
SCALE: 1" = 100'

NOTE: Bearings are astronomic, derived from the  
east boundary of Lot 1, Plan 23039.

LEGEND: • OIP denotes an old iron pin found.  
WT denotes witness.

3

PLAN 8935



N.W. 1/4  
OF N.E. 1/4  
D.L. 4048

I, DONALD A. DUFFY of the City of Prince George,  
a British Columbia Land Surveyor, make oath and say  
that I was present at and did personally superintend  
the survey represented by this plan and that the survey  
and plan are correct. The said survey was completed  
on the 17 day of FEB, 1977

*[Signature]*  
B.C.L.S.

Sworn before me this 7  
day of MARCH, 1977

A Commissioner for taking Affidavits  
for British Columbia.

THE BOARD OF SCHOOL TRUSTEES OF  
SCHOOL DISTRICT N<sup>o</sup> 57 (PRINCE GEORGE)

*[Signature]*  
Chairman  
*[Signature]*  
Secretary/Treasurer

Approved under the Land Registry Act  
this 17<sup>th</sup> day of MARCH, 1977.

*[Signature]*  
Approving Officer, City of Prince George

This plan lies within the Fraser-Fort George  
Regional District.

W. D. USHER & ASSOCIATES  
LAND SURVEYORS  
PRINCE GEORGE B.C.  
84028