

PLAN OF SUBDIVISION OF
THE REM. OF S.W. 1/4 D.L. 4032,
CARIBOO DISTRICT.

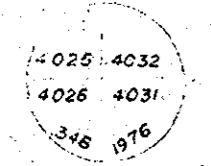
Scale: 1" = 200'

PLAN No 23227

Deposited in the Land Registry Office at
Prince George on the 23 day of March 1977

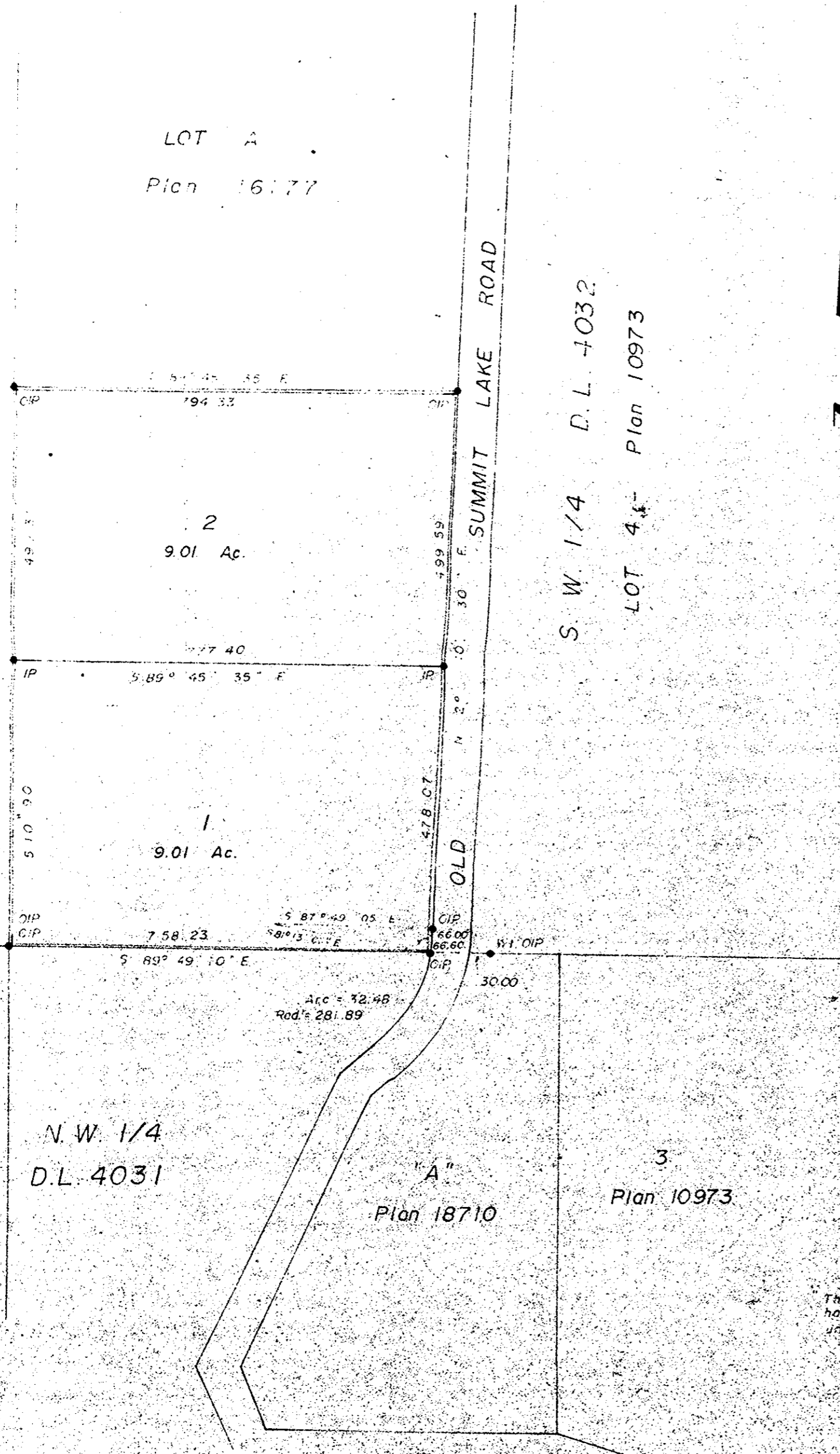
"E. T. Schooley"
Registrar

S.E. 1/4
D.L. 4025



N.E. 1/4
D.L. 4026

N.W. 1/4
D.L. 4031



S.W. 1/4 D.L. 4032
LOT 4 - Plan 10973

Bearings are astronomic and are derived from
Plan 16177.

- PCpn Standard Concrete Post
- PRock Standard Rock Post
- PP Standard Pipe Post
- IP Standard Iron Post
- P Wooden Post
- L.P Lead Plug
- Denoting "Old"
- WT Denoting "Witness"
- CIP Capped Iron Post

I, V. Bartell, of the City of Prince George,
British Columbia Land Surveyor, make oath and
say that I was present and did personally
superintend the survey represented by this
plan and that the survey and plan are correct.
The said survey was completed on
the 15th day of October 1976.

V. Bartell

Sworn before me at Prince George, B.C.
this 18 day of October 1976.

Approved under the Land Registry Act
on the 23 day of MARCH 1977.

E. T. Schooley
Approving Officer

A Commissioner for taking affidavits
for British Columbia

Owner *S. M. Stogman*

Witness *[Signature]*

This plan lies within the ECOSP
Part - George Regional District.

The registered owner designated hereon hereby declares that he
has entered into a condition or covenant with the municipality of Prince George and the Province of British Columbia,
under Sec 24A of the Land Registry Act.

McWilliam—Whyte—Goble & Associates
B.C. LAND SURVEYORS
PRINCE GEORGE/SMITHERS/KARLOOFS

REF No 76129