

(JL)

**EXPLANATORY PLAN SHOWING  
PARTIAL RELEASE OF EASEMENT  
AS SET OUT IN C16580 AND L28255  
OVER LOT 2, DISTRICT LOT 343  
CARIBOO DISTRICT, PLAN 22956**

PLAN ~~2~~ 3221

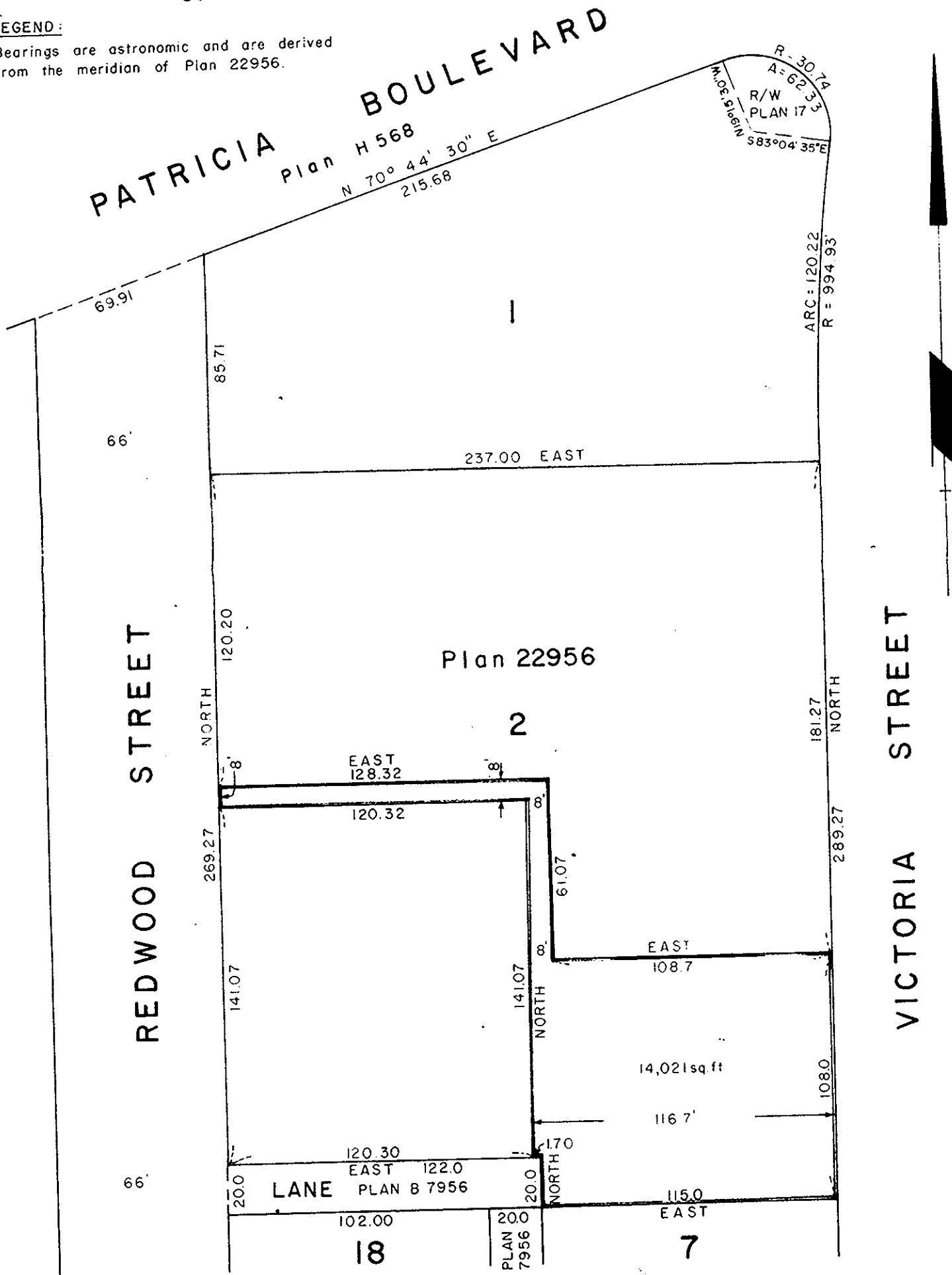
Deposited in the Land Registry Office  
at PRINCE GEORGE, B.C.  
this 19 day of March 1971

"E. T. Schooley"  
Registrar *per se*

SCALE: 1 INCH = 50 FEET

**LEGEND:**

Bearings are astronomic and are derived  
from the meridian of Plan 22956.



This plan lies within the Fraser - Fort George Regional District.

Certified Correct  
this 22 day of December 1976.

*Morgan Stewart* B.C.L.S.

MORGAN STEWART AND COMPANY LIMITED  
SURVEYORS AND ENGINEERS