

26-226

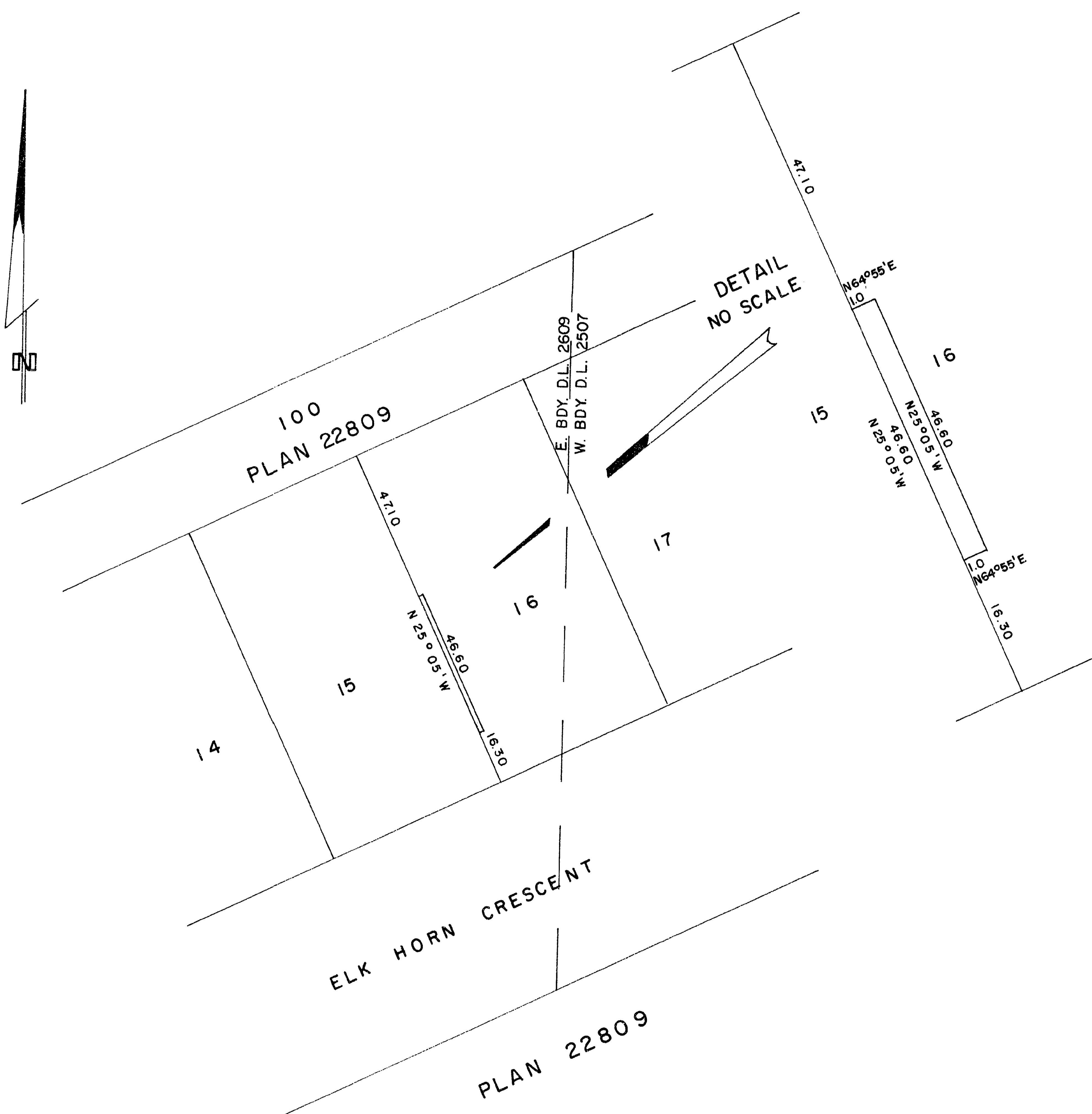
EXPLANATORY PLAN OF EASEMENT THROUGH
LOT 16, PLAN 22809
DISTRICT LOTS 2609 & 2507
CARIBOO DISTRICT - BRITISH COLUMBIA

SCALE: 1" = 40'

PLAN No 23217

Deposited in the Land Registry
Office at Prince George, B.C. this
17 day of March, 1977.

"E. T. Schooley"
Registrar *per CR*



CERTIFIED CORRECT

According to measurements shown
on Plan 22809.

This 7th day of March, 1977.

[Signature]
D.A. DUFFY, B.C.L.S.

This plan lies within the Fraser-Fort George
Regional District.

W. D. USHER & ASSOCIATES
LAND SURVEYORS
PRINCE GEORGE - B.C.

8629 A