

26

EXPLANATORY PLAN OF EASEMENT THROUGH  
LOTS A, B, C, D, E & F, PLAN 22549  
DISTRICT LOT 2507  
CARIBOO DISTRICT-BRITISH COLUMBIA

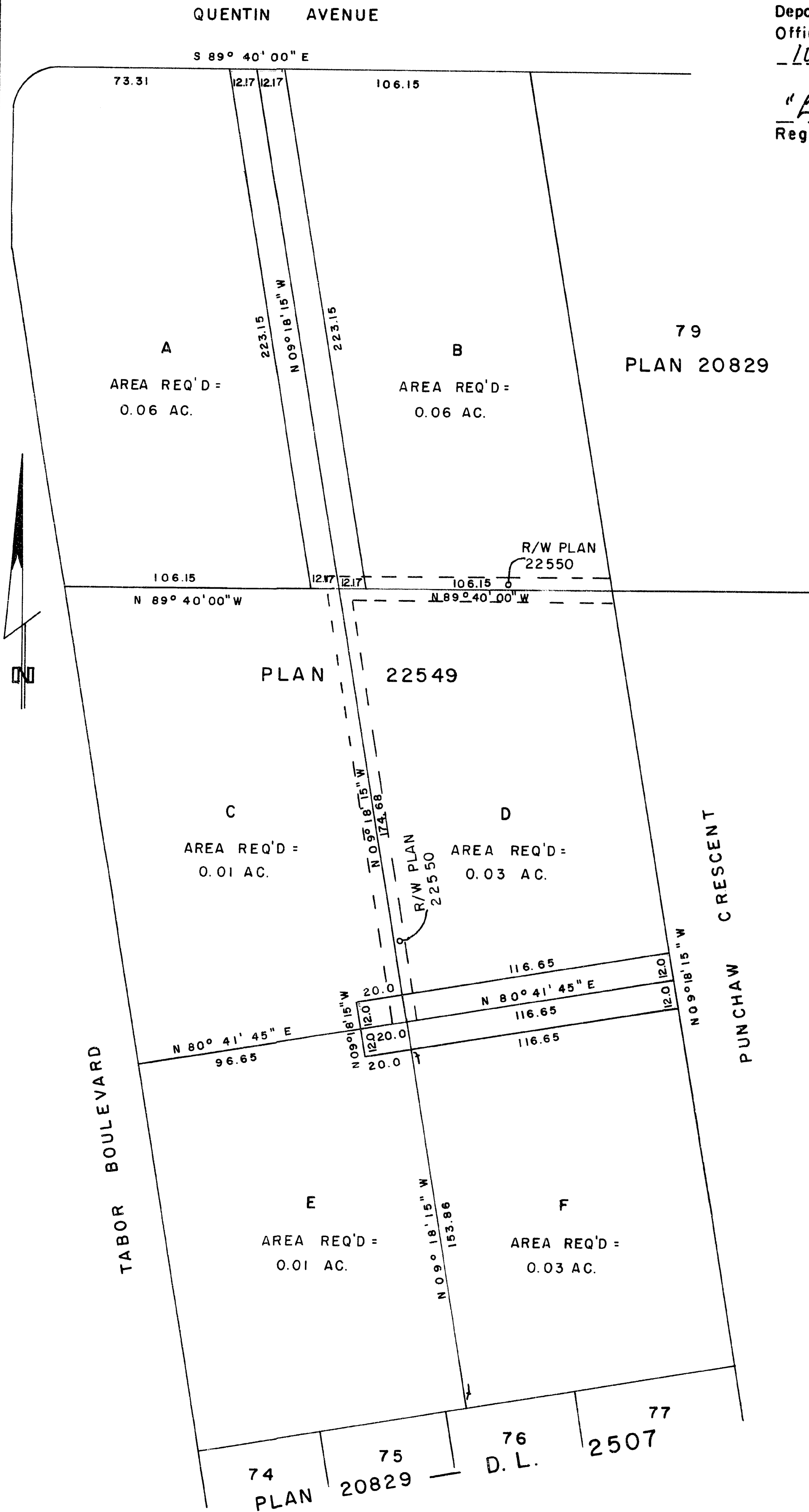
SCALE: 1" = 50'

NOTE: Bearings are astronomic, derived from the west  
boundary of Lot B, Plan 22549.

PLAN No 23208

Deposited in the Land Registry  
Office at Prince George, B.C. this  
10 day of March, 1977.

"E. T. Schooley"  
Registrar per: er



CERTIFIED CORRECT  
According to measurements shown  
on Plan 22549.  
This 7 th day of February, 1977.

[Signature]  
D.A. DUFFY, B.C.L.S.

This plan lies within the Fraser-Fort George  
Regional District.

W. D. USHER & ASSOCIATES  
LAND SURVEYORS  
PRINCE GEORGE — B.C.