

26-226

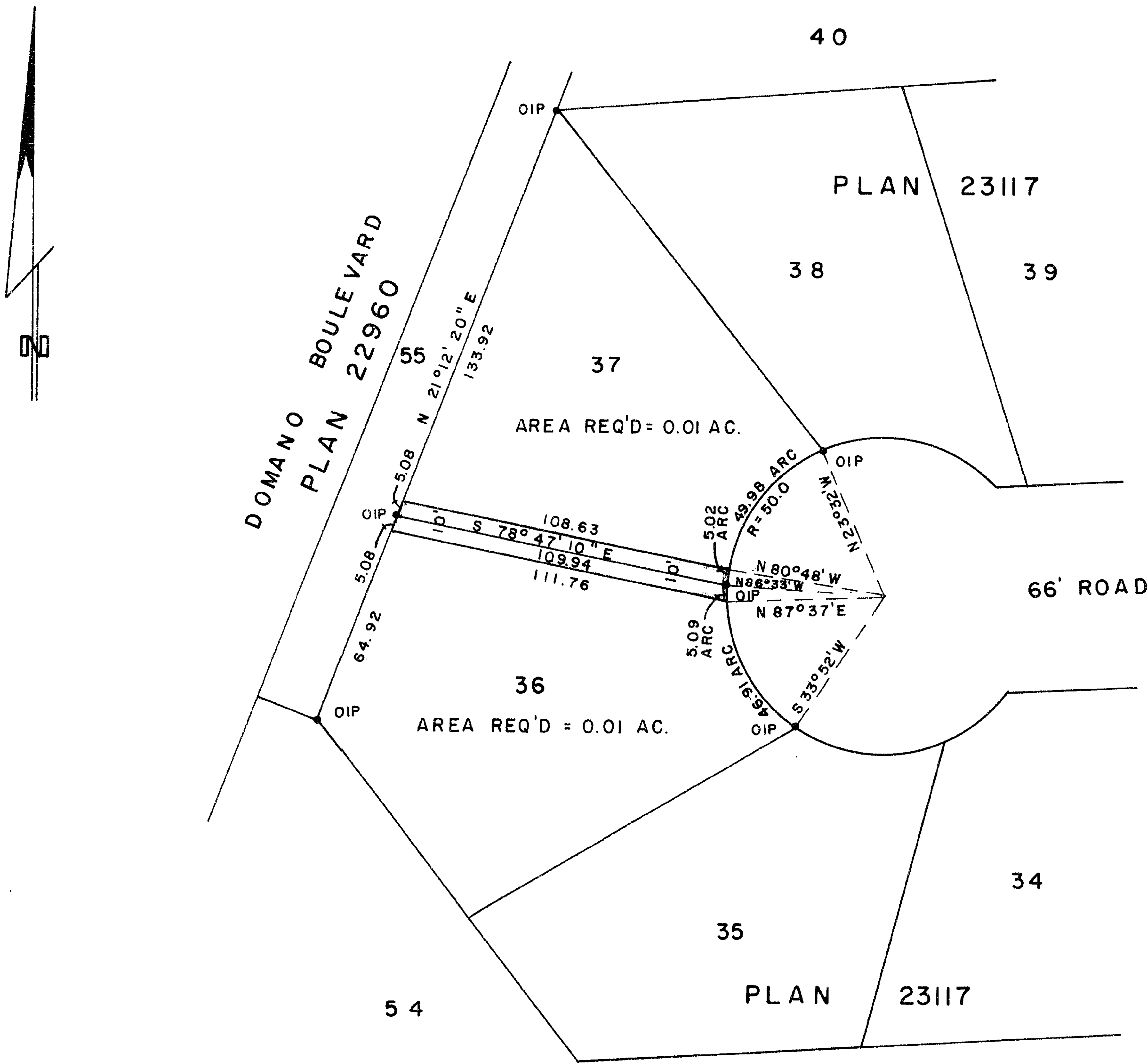
PLAN OF RIGHT- OF-WAY THROUGH
LOTS 36 & 37, PLAN 23117
DISTRICT LOT 2013
CARIBOO DISTRICT— BRITISH COLUMBIA

SCALE : 1" = 50'

NOTE: Bearings are astronomic, derived from the south boundary of Lot 37, Plan 23117.

LEGEND: • OIP denotes an old iron pin found.

PLAN № 23193
Deposited in the Land Registry
Office at Prince George , B.C. this
2 day of March , 1977
"E. T. Scheedley"
Registrar per: op



D.L. 2013

I, DONALD A. DUFFY of the City of Prince George, a British Columbia Land Surveyor, make oath and say that I was present at and did personally superintend the survey represented by this plan and that the survey and plan are correct. The said survey was completed on the 9 day of DEC, 1976

Sworn before me this 7 day of FEB, 1977
B.C.L.S.

A Commissioner for taking Affidavits
for British Columbia.

This plan lies within the Fraser-Fort George
Regional District.

W. D. USHER & ASSOCIATES
LAND SURVEYORS
PRINCE GEORGE — B.C.
5970-P