

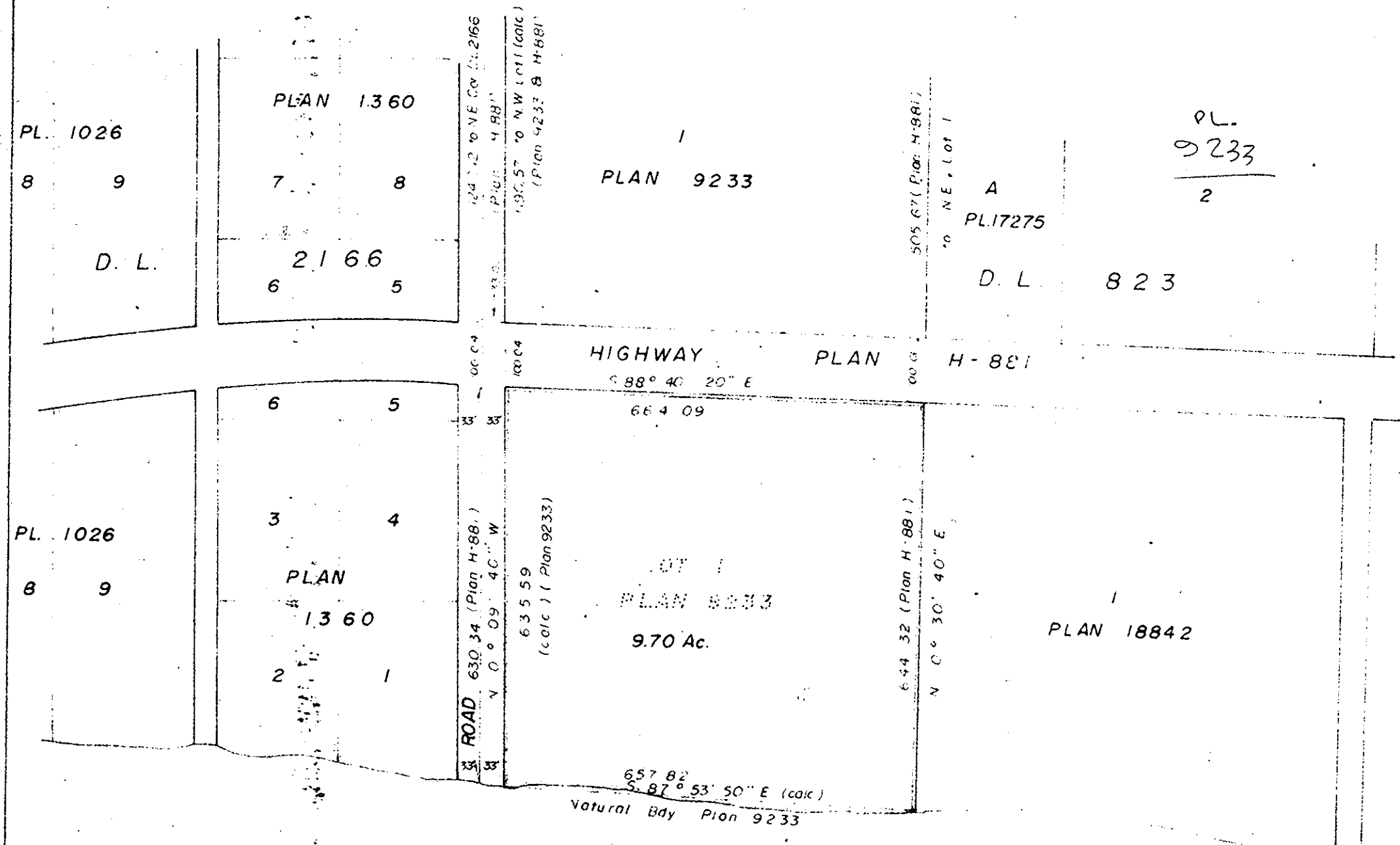
PLOTTED (ON)

EXPLANATORY PLAN of
PART of LOT 1 of PLAN 9233,
DISTRICT LOT 823,
CARIBOO DISTRICT.

SCALE: 1" = 200'

PLAN NO. 22190
DEPOSITED IN THE LAND REGISTRY OFFICE AT
PRINCE GEORGE THIS 28 DAY OF February, 1977

"E. J. Schooley"
REGISTRAR



CERTIFIED CORRECT
according to Land Registry Office Records
this 25 day of November, 1976

V. Bartell
V. Bartell, B.C.L.S.

This plan lies within the Fraser Fort -
George Regional District.

McWilliam, Whyte, Goble, & Associates,
B.C. Land Surveyors,
Prince George - Kamloops - Smithers.

REF. NO. 76147

D.L. 823

22190