

PLAN OF SUBDIVISION OF
 LOTS 1 & 2, PLAN 22273
 DISTRICT LOT 3683
 CARIBOO DISTRICT—BRITISH COLUMBIA

SCALE: 1" = 200'

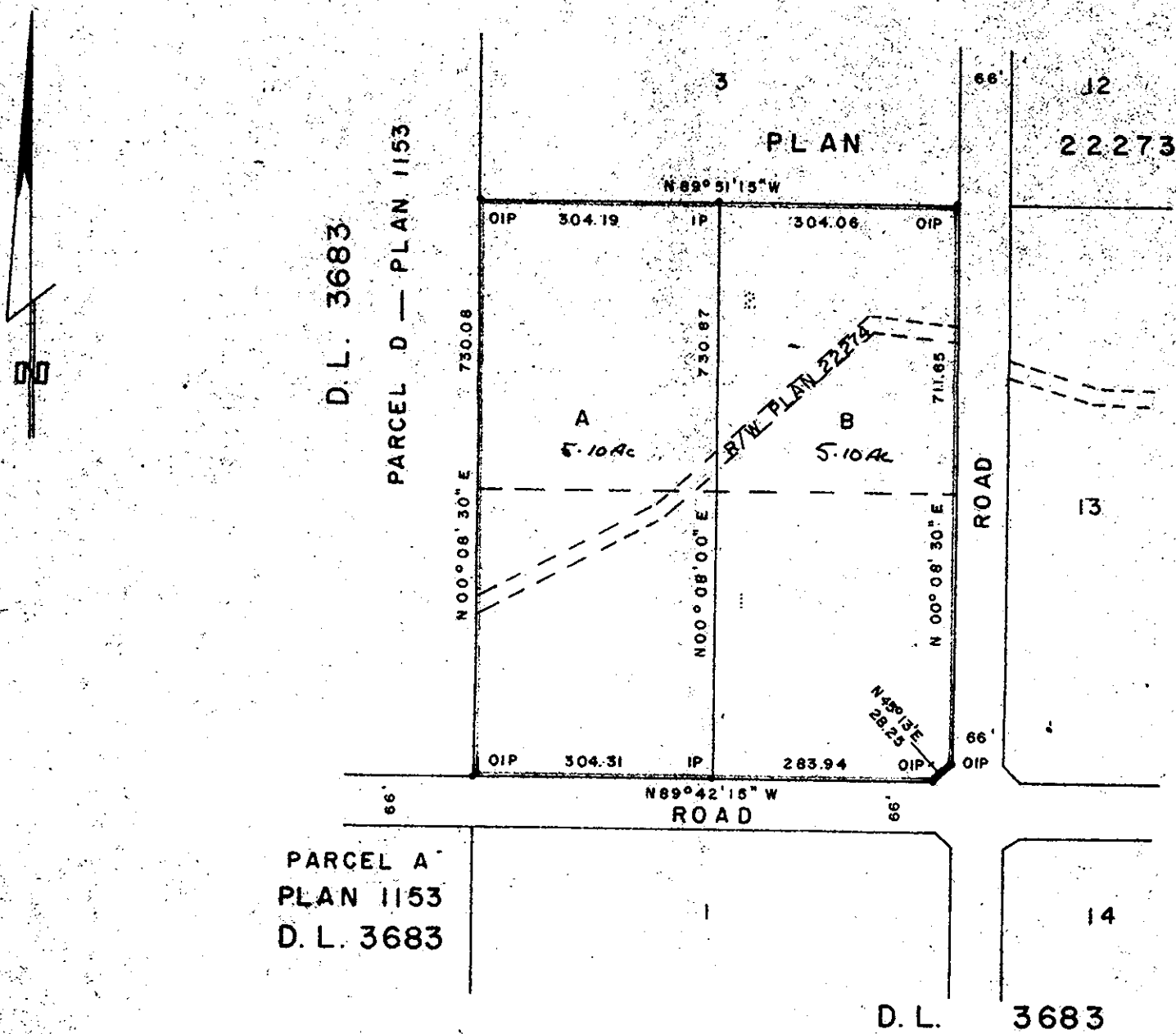
NOTE: Bearings are astronomic, derived from the south boundary of Lot 1, Plan 22273.

LEGEND: •OIP denotes an old iron pin found.
 •IP denotes an iron pin set.

PLAN No. 23154

Deposited in the Land Registry Office at Prince George, B.C. this 14 day of February, 1976

"E. T. Schooley"
 Registrar



MORTGAGEE J. Williamson

WITNESS Helene Sundberg

MORTGAGEE J. Williamson

Approved under the Land Registry Act this 8 day of Nov, 1976

WITNESS Helene Sundberg

Orlato
 Approving Officer, City of Prince George

RIDGE SERVICES CORP.

W. D. Usher
 PRESIDENT

This plan lies within the Fraser-Fort George Regional District.

I, DONALD A. DUFFY of the City of Prince George, a British Columbia Land Surveyor, make oath and say that I was present at and did personally superintend the survey represented by this plan and that the survey and plan are correct. The said survey was completed on the 1 day of Nov, 1976

[Signature]
 B.C.L.S.

Sworn before me this 4 day of Nov, 1976

[Signature]
 Commissioner for taking Affidavits for British Columbia