

PLAN OF SUBDIVISION OF PART OF  
LOT A , PLAN 16132  
DISTRICT LOT 2425  
CARIBOO DISTRICT - BRITISH COLUMBIA

SCALE: 1" = 100'

NOTE: Bearings are astronomic, derived from the  
east boundary of Lot A , Plan 16132.

LEGEND: • OIP denotes an old iron pin found.  
• IP denotes an iron pin set.

PLAN No 73106

Deposited in the Land Registry  
Office at Prince George , B.C. this  
10 day of February, 1977

RECEIVED  
FEB 17 1977

"K. T. Schooley"  
Registrar

B.C. ASSESSMENT  
AUTHORITY

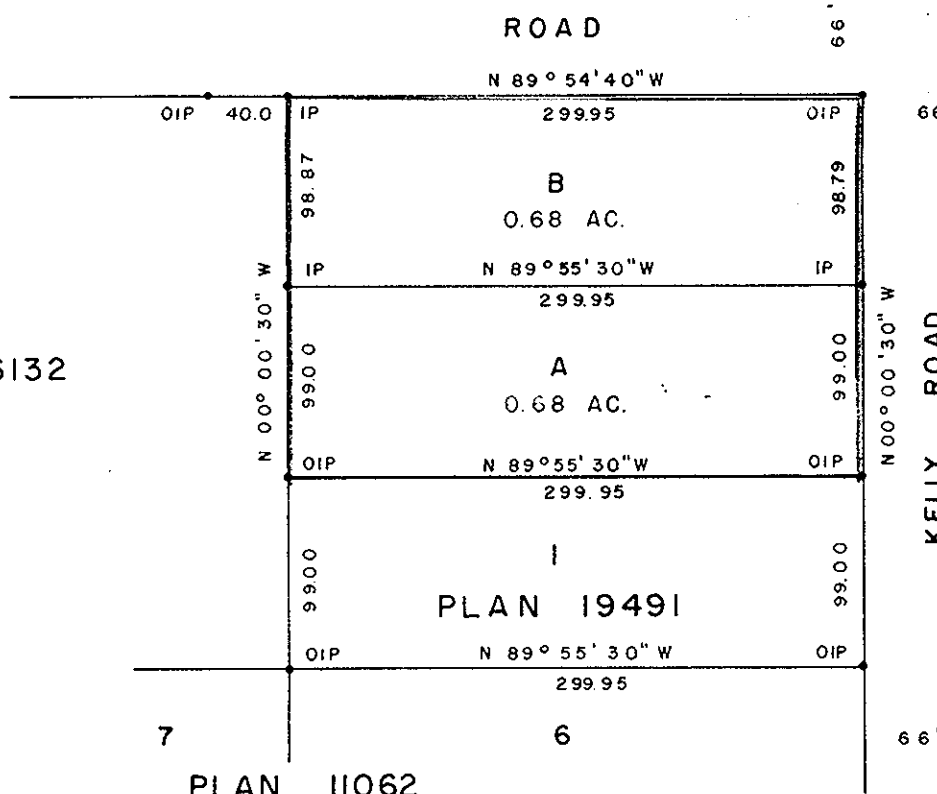


PART OF REM. OF S.E. 1/2 OF  
S.E. 1/4 D. L. 2425

18  
PLAN 10676

ROAD

A  
PLAN 16132



BLOCK A  
DD 49978 M

D. L. 2432

PLAN 11062  
D. L. 2425

I, DONALD A. DUFFY of the City of Prince George,  
a British Columbia Land Surveyor, make oath and say  
that I was present at and did personally superintend  
the survey represented by this plan and that the survey  
and plan are correct. The said survey was completed  
on the 17 day of DEC, 1976

*[Signature]*  
B.C.L.S.

Sworn before me this 10  
day of JANUARY, 1977

*[Signature]*  
A Commissioner for taking Affidavits  
for British Columbia.

Owner *[Signature]*

Witness *[Signature]*

Approved under the Land Registry Act  
this 26 day of JAN, 1977

*[Signature]*  
Approving Officer, City of Prince George

This plan lies within the Fraser-Fort George  
Regional District.