

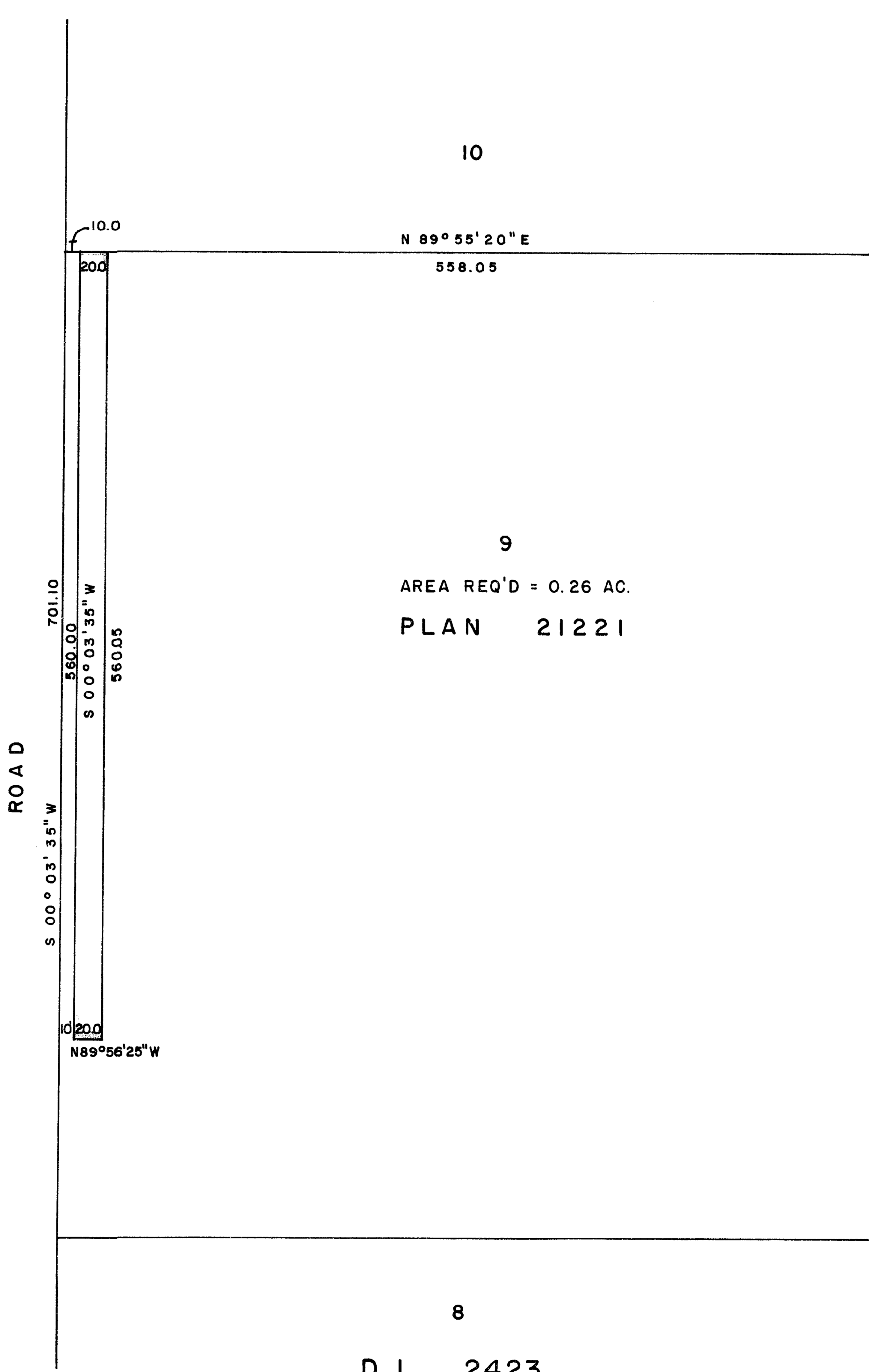
26

EXPLANATORY PLAN OF EASEMENT THROUGH
LOT 9, PLAN 21221
DISTRICT LOT 2423
CARIBOO DISTRICT - BRITISH COLUMBIA

SCALE: 1" = 100'

PLAN No **23125**
Deposited in the Land Registry
Office at Prince George, B.C. this
10 day of February, 1977.

"E. I. Schooley"
Registrar per. ex.



9
AREA REQ'D = 0.26 AC.
PLAN 21221

LOT 3 — PLAN 20279

D. L. 2423

CERTIFIED CORRECT

According to information shown
on Plan 21221.
This 21 day of JAN., 1977.

[Signature]
D. A. DUFFY, B.C.L.S.

W. D. USHER & ASSOCIATES
LAND SURVEYORS
PRINCE GEORGE — B. C.