

PLAN OF SUBDIVISION OF PART OF  
N. 1/2 OF N.W. 1/4 DISTRICT LOT 2431  
CARIBOO DISTRICT - BRITISH COLUMBIA

SCALE: 1" = 200'

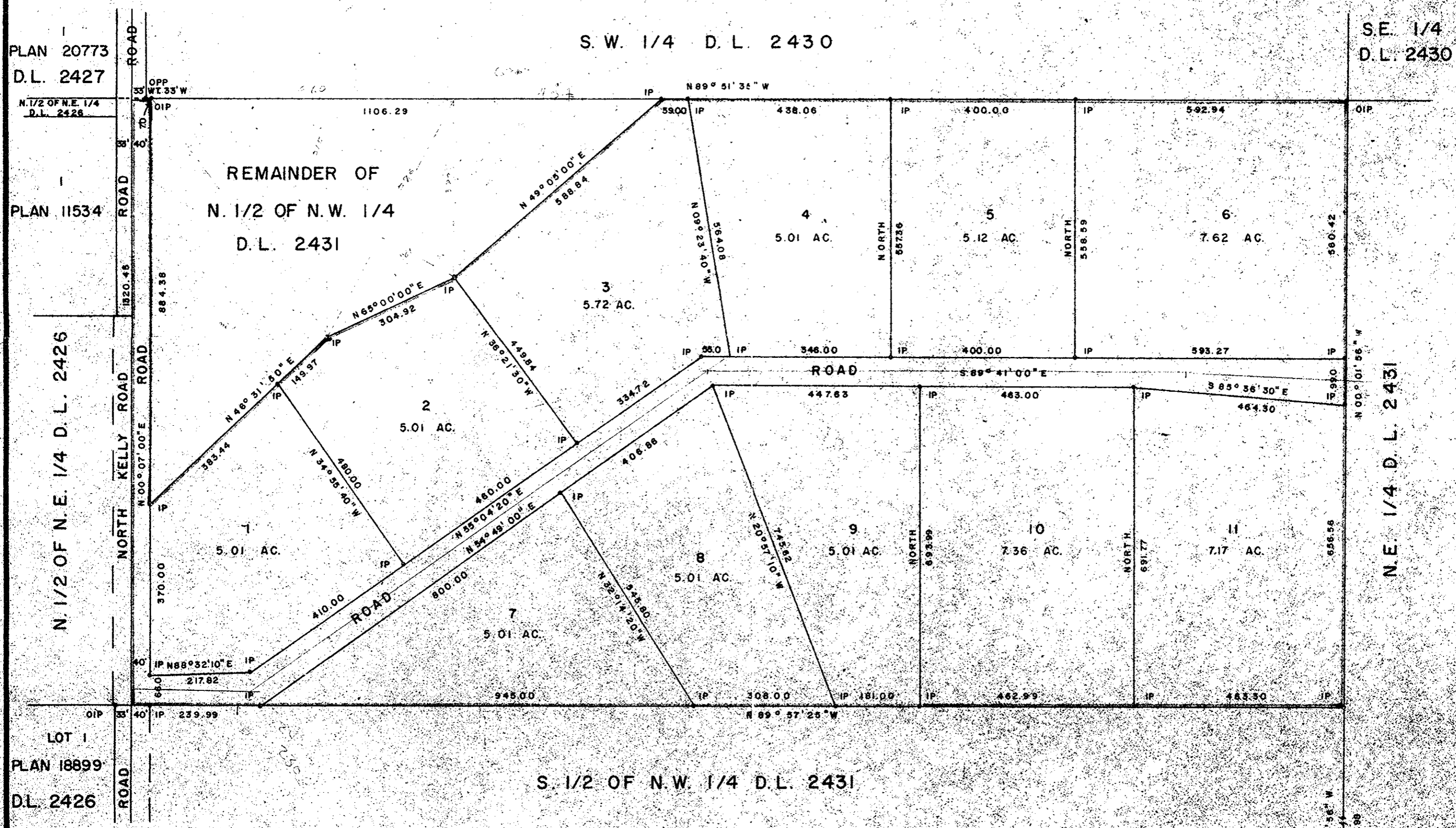
NOTE: Bearings are astronomic, derived from the west boundary of D.L. 2431 as shown on Plan 18899.

LEGEND:  
• OPP denotes an old pipe post found  
• OIP denotes an old iron pin found.  
• IP denotes an iron pin set.  
• OBT denotes bearing tree.  
• WT denotes witness.

PLAN No **23057**

Deposited in the Land Registry Office at Prince George, B.C. this 1 day of December, 1976.

F. T. Schooley  
Registrar



I, DONALD A. DUFFY of the City of Prince George, a British Columbia Land Surveyor, make oath and say that I was present at and did personally superintend the survey represented by this plan and that the survey and plan are correct. The said survey was completed on the 1 day of OCT, 1976.

[Signature]  
B.C.L.S.

Sworn before me this 12 day of Nov, 1976

[Signature]  
A Commissioner for Taking Affidavits for British Columbia.

Owner Barbara Colleen Green

Witness [Signature]

SW 1/4 D.L. 2431      SE 1/4 D.L. 2431

Approved under the Land Registry Act this 20<sup>th</sup> day of DEC, 1976.

[Signature]  
Approving Officer, City of Prince George

This plan lies within the Fraser-Fort George Regional District.

W. D. USHER & ASSOCIATES  
LAND SURVEYORS  
PRINCE GEORGE - B.C.