

PLAN OF SUBDIVISION OF  
 LOT 9, PLAN 15557  
 DISTRICT LOT 936  
 CARIBOO DISTRICT-BRITISH COLUMBIA

SCALE: 1" = 40'

NOTE: Bearings are astronomic, derived from the west boundary of Central Street as shown on Plan 15557.

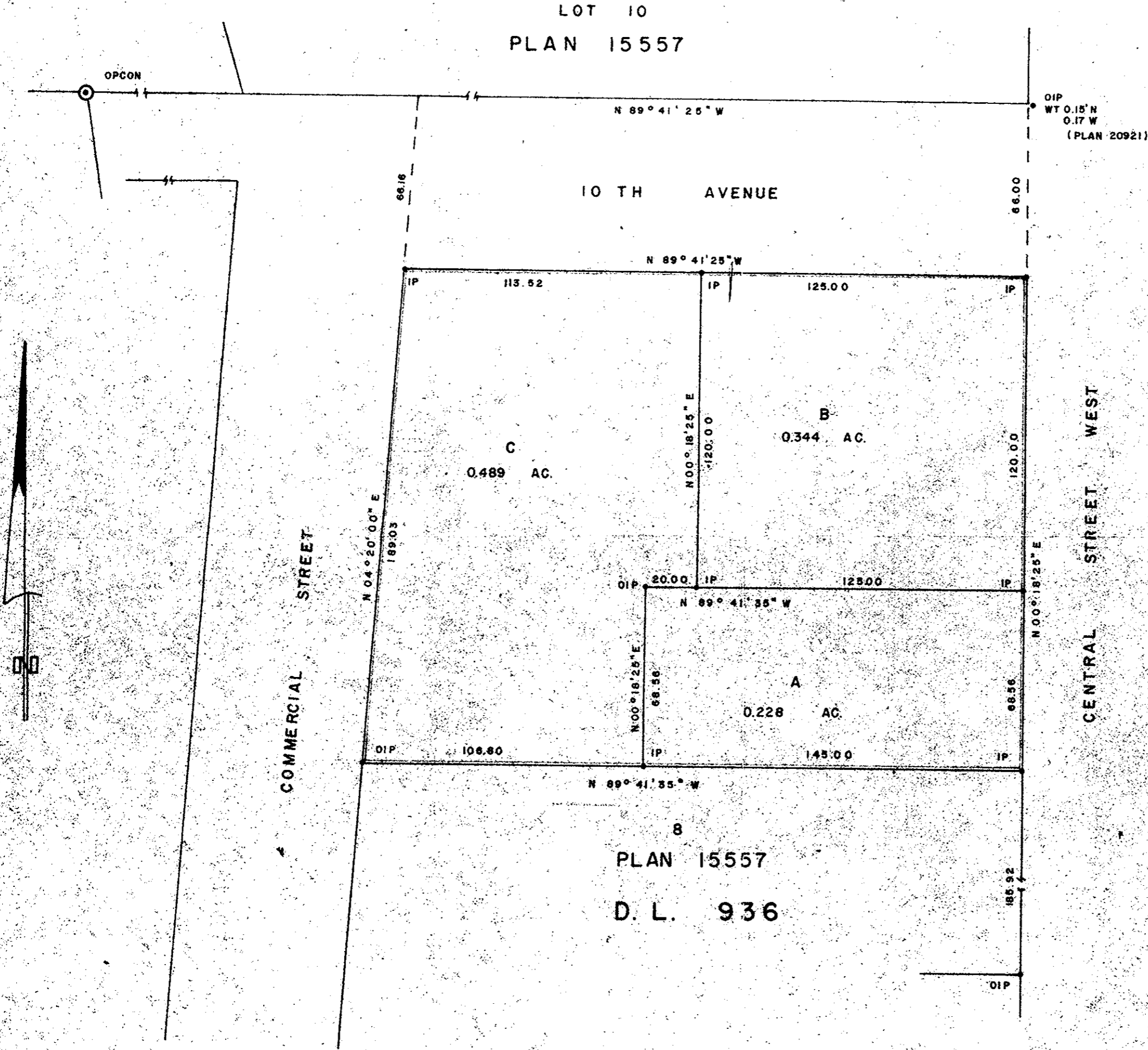
LEGEND:  $\odot$  OPCON denotes an old concrete monument found.  
 • OIP denotes an old iron pin found.  
 • IP denotes an iron pin set.  
 WT denotes witness.

23041

PLAN N<sup>o</sup> ~~15557~~

Deposited in the Land Registry Office at Prince George, B.C. this 24 day of November, 1976

"F. T. Schooley"  
 Registrar



I, DONALD A. DUFFY of the City of Prince George, a British Columbia Land Surveyor, make oath and say that I was present at and did personally superintend the survey represented by this plan and that the survey and plan are correct. The said survey was completed on the 29th day of May, 1976.

*[Signature]*  
 B.C.L.S.

Sworn before me this 4 day of FEB, 1976

*[Signature]*  
 A Commissioner for taking Affidavits for British Columbia.

SARO HOLDINGS LTD.

*[Signature]*  
 President

Approved under the Land Registry Act this 26 day of OCT, 1976

*[Signature]*  
 Approving Officer, City of Prince George

This plan lies within the Fraser-Fort George Regional District.

W. D. USHER & ASSOCIATES  
 LAND SURVEYORS  
 PRINCE GEORGE - B.C.  
 AB 52 6985