

17
Plotted (KS)
KS

PLAN OF SUBDIVISION OF PART OF
S.E. 1/4 DISTRICT LOT 818
CARIBOO DISTRICT - BRITISH COLUMBIA

SCALE 1" = 100'

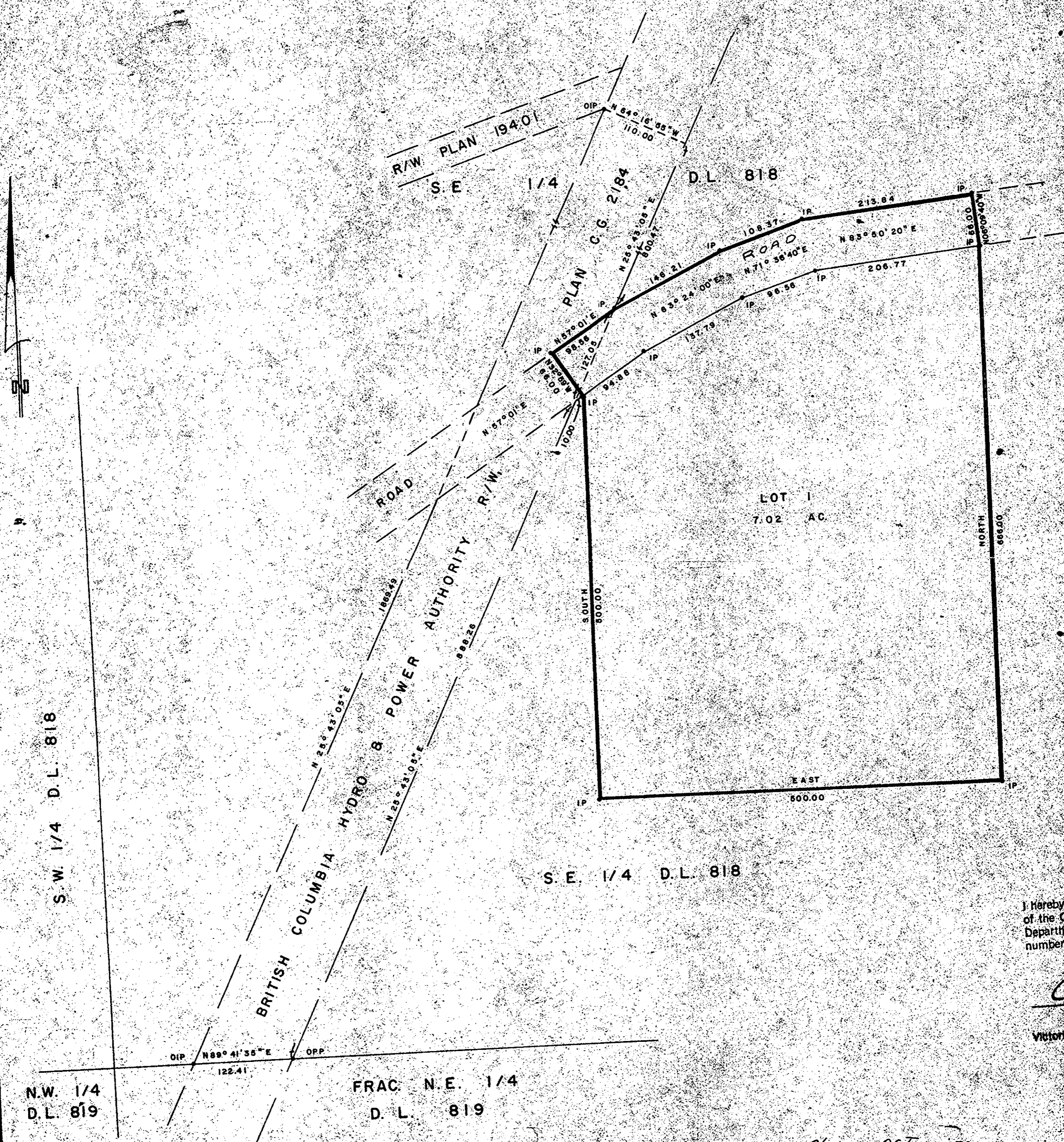
NOTE: Bearings are astronomic, derived from the westerly boundary of the B.C. Hydro & Power Authority R/W, Plan C.G. 2184 as shown on Plan 19401

LEGEND: *OPP denotes an old pipe post found.
*OIP denotes an old iron pin found.
*IP denotes an iron pin set.

PLAN NO. 23016

Deposited in the Land Registry Office of Prince George, B.C. this 15 day of November, 1976

"E. T. Schooley"
Registrar



I hereby certify that this is a true copy of the Official Plan on deposit in the Department of Environment, and numbered Plan 27 Tube 595

[Signature]
Surveyor General

Victoria, B.C. September 22, 1976

Re-approved this 26 day of OCT 1976

Approved under the Land Registry Act this 4th day of AUG 1976

[Signature]
Approving Officer

[Signature]
Approved Officer, City of Prince George

BRITISH COLUMBIA HYDRO AND POWER AUTHORITY

[Signature]
DIRECTOR

[Signature]
ASSOCIATE SECRETARY

This plan lies within the Fraser-Fort George Regional District.

W. D. USHER & ASSOCIATES
LAND SURVEYORS
PRINCE GEORGE B.C.

I, DONALD A. DUFFY of the City of Prince George, a British Columbia Land Surveyor, make oath and say that I was present at and did personally superintend the survey represented by this plan and that the survey and plan are correct. The said survey was completed on the 8 day of JUNE, 1976

[Signature]
B.C.L.S.

Sworn before me this 8 day of JUNE, 1976

[Signature]
A Commissioner for Taking Affidavits for British Columbia

103/3