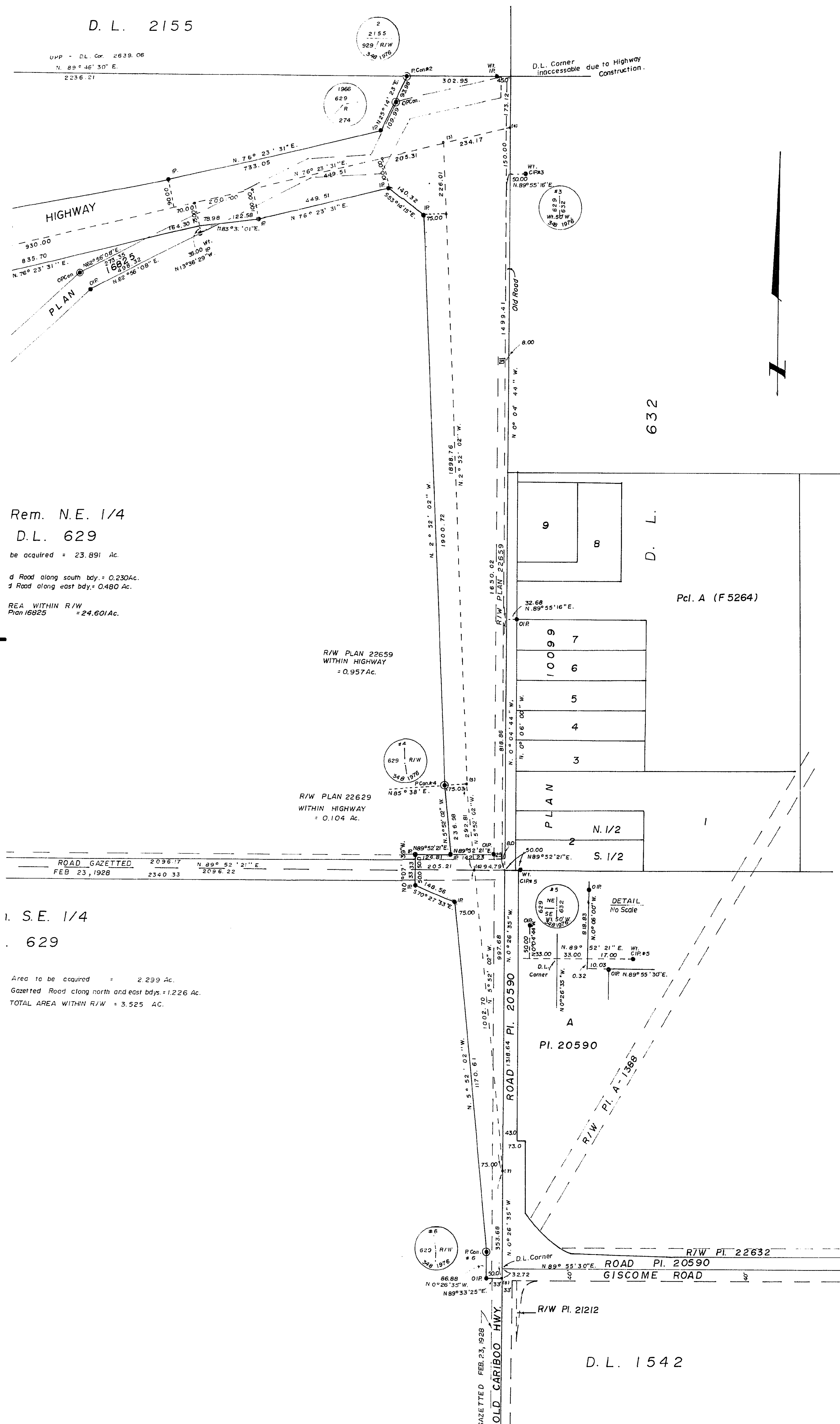


PLAN NO. 23000
 Deposited in the Land Registry Office of
 Prince George the 17th day of August 1976

K. T. Schwedley
 Registrar

D. L. 2155

U.P.P. - D.L. Cor. 2639.06
 N. 89° 46' 30" E.
 2236.21



PLAN OF HIGHWAY RIGHT-OF-WAY
 THROUGH DISTRICT LOT 629,
 CARIBOO DISTRICT.

Scale: 1" = 200'

Rem. N.E. 1/4
 D.L. 629

Area to be acquired = 23.891 Ac.

d Road along south bdy. = 0.230 Ac.
 d Road along east bdy. = 0.480 Ac.

REA WITHIN R/W
 Plan 16825 = 24.601 Ac.

R/W PLAN 22659
 WITHIN HIGHWAY
 = 0.957 Ac.

R/W PLAN 22629
 WITHIN HIGHWAY
 = 0.104 Ac.

ROAD GAZETTED
 FEB 23, 1928

S. E. 1/4
 629

Area to be acquired = 2.299 Ac.
 Gazetted Road along north and east bdys = 1.226 Ac.
 TOTAL AREA WITHIN R/W = 3.525 Ac.

Bearings are astronomic referred through the
 point of Longitude W. 122° 32' 15" Latitude
 N. 53° 54' 59" and derived from observations on
 Polaris.

- Con. Standard Post in Concrete.
- P.P. Standard Pipe Post.
- C.I.P. Capped Iron Post.
- I.P. Standard Iron Post.
- O. Denotes "old"
- W. Denotes "witness"
- Pl. Denotes plan.

I, V. Bartell, of the City of Prince George,
 British Columbia, Land Surveyor, make oath
 and say that I was present at and did personally
 supervise the survey represented by this plan and
 that the survey and plan are correct.
 The said survey was completed on
 the 17th day of August 1976.

V. Bartell
 V. Bartell, B.C.L.S.

Approved under the Land Registry Act
 this 17th day of August 1976.

K. T. Schwedley
 Registrar

Sworn before me at Prince George, B.C.
 this 17th day of August 1976

[Signature]
 A Commissioner for taking affidavits
 for British Columbia

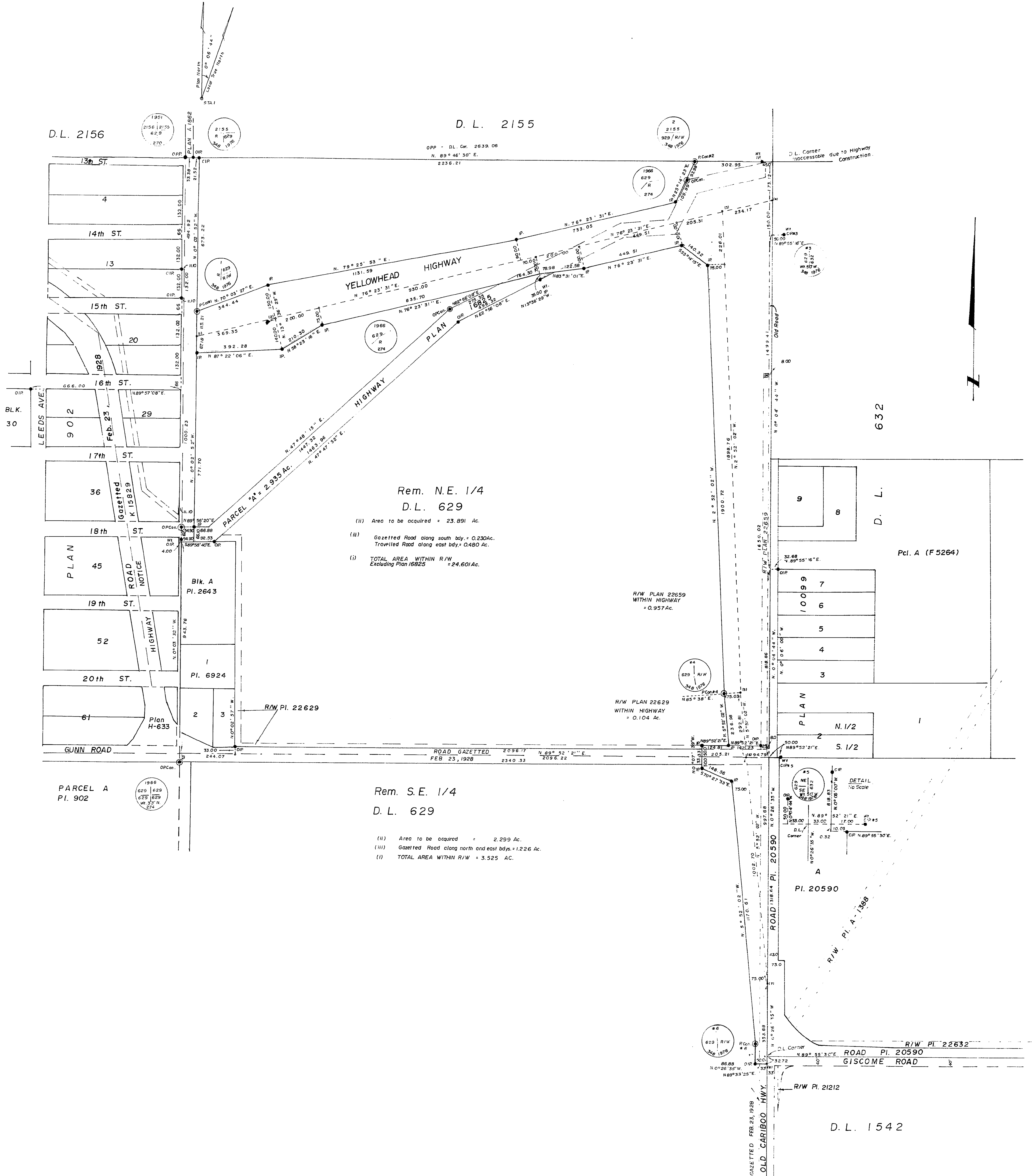
BOOK of REFERENCE (outlined in red)	
DESCRIPTION	AREA
Rem. N.E. 1/4 D.L. 629	24.601 Ac.
Rem. S.E. 1/4 D.L. 629	3.525 Ac.
BOOK of REFERENCE (outlined in green)	
Parcel A, Part Plan 16825	2.935 Ac.

This plan lies within the Fraser Fort-
 George Regional District

TRAVERSE TABLE				
STATION	DISTANCE	BEARING	NORTHING	EASTING
1			10,000.00	10,000.00
2	369.35	N. 76° 23' 31" E.	10,086.90	10,358.98
3	2054.82	N. 76° 23' 31" E.	10,570.36	12,356.12
4	234.17	N. 76° 23' 31" E.	10,625.45	12,583.71
5	2124.77	S. 2° 52' 02" E.	10,570.36	12,356.12
6	292.81	S. 5° 52' 02" E.	8,156.97	12,492.33
7	1002.70	S. 5° 52' 02" E.	7,159.52	12,594.83
8	353.68	S. 0° 26' 35" E.	6,805.85	12,597.57

McWilliam, Whyte & Co. Associates,
 B.C. Land Surveyors,
 Prince George - Kamloops - Smithers

REF. NO. 76070



D.L. 2156

D.L. 2155

OPP - DL Cor. 2639.06
N. 89° 46' 30" E.
2236.21

Rem. N.E. 1/4
D.L. 629

- (ii) Area to be acquired = 23.891 Ac.
- (iii) Gazetted Road along south bdy. = 0.230Ac.
Travelled Road along east bdy. = 0.480 Ac.
- (i) TOTAL AREA WITHIN R/W
Excluding Plan 16825 = 24.601Ac.

R/W PLAN 22659
WITHIN HIGHWAY
= 0.957Ac.

R/W PLAN 22629
WITHIN HIGHWAY
= 0.104 Ac.

Rem. S.E. 1/4
D.L. 629

- (ii) Area to be acquired = 2.299 Ac.
- (iii) Gazetted Road along north and east bdys. = 1.226 Ac.
- (i) TOTAL AREA WITHIN R/W = 3.525 Ac.

PARCEL A
PI. 902

D.L. 1542

Beori
cont
N 53'
Point

● P
● C
● IF
○ V
F

Appr
this

42

R
R
E

R
R
E