

26

PLAN OF EASEMENT THROUGH
LOT 15, PLAN 19954
DISTRICT LOT 2101
CARIBOO DISTRICT - BRITISH COLUMBIA

SCALE: 1" = 50'

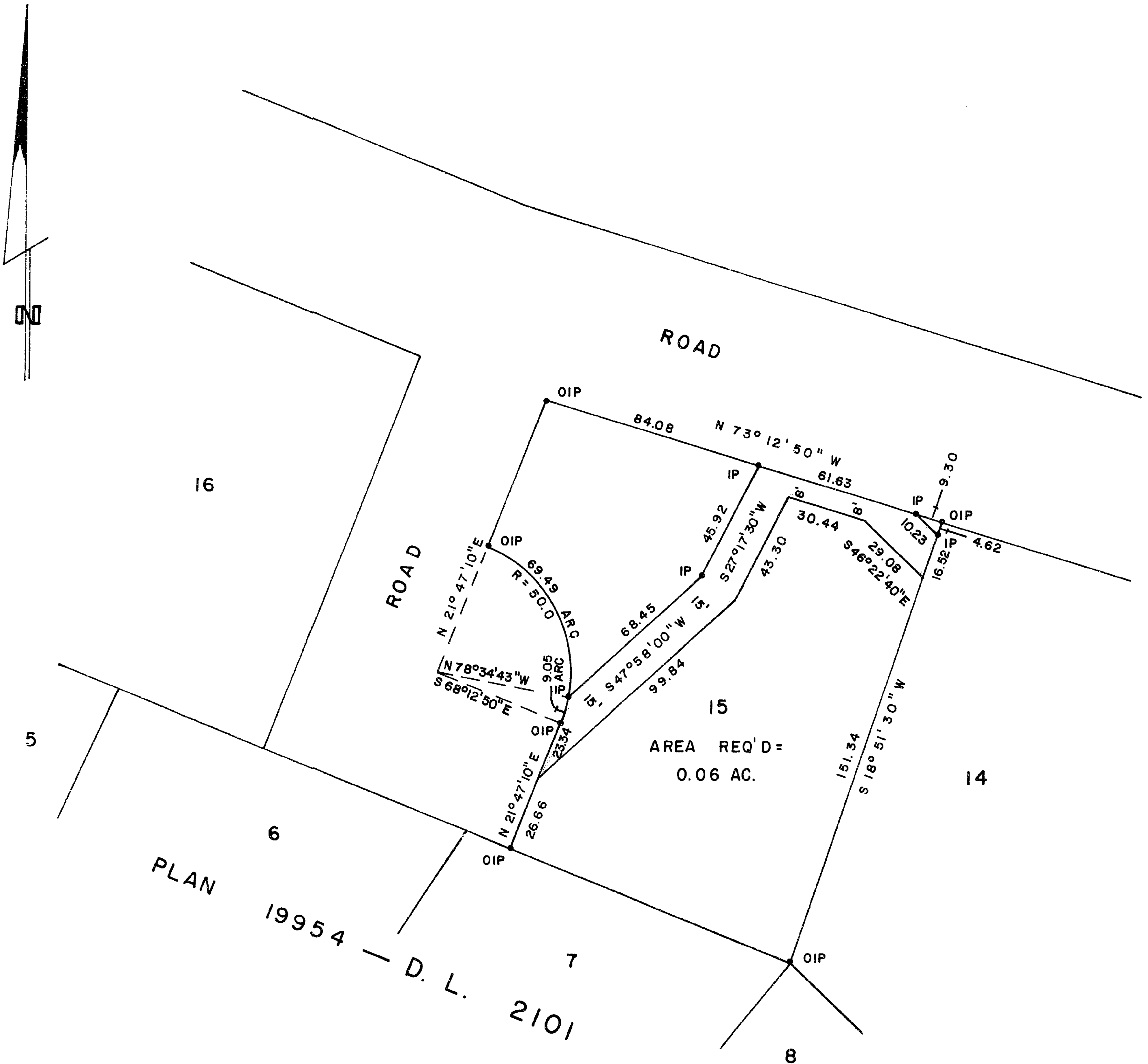
NOTE: Bearings are astronomic, derived from the
north boundary of Lot 1, Plan 19954.

LEGEND: •OIP denotes an old iron pin found.
•IP denotes an iron pin set.

PLAN No 22963

Deposited in the Land Registry
Office at Prince George, B.C. this
19 day of October, 1976

"E. J. Schooley"
Registrar per. et



I, DONALD A. DUFFY of the City of Prince George,
a British Columbia Land Surveyor, make oath and say
that I was present at and did personally superintend
the survey represented by this plan and that the survey
and plan are correct. The said survey was completed
on the 15 day of OCT - 1976

[Signature]
B.C.L.S.

Sworn before me this 18
day of OCT - 1976

[Signature]
A Commissioner for taking Affidavits
for British Columbia.

This plan lies within the Fraser-Fort George
Regional District.