

PLAN OF SUBDIVISION OF PART OF
LOT A, PLAN 17485
DISTRICT LOT 635
CARIBOO DISTRICT - BRITISH COLUMBIA

SCALE: 1" = 100'

PLAN N^o 22953

NOTE: Bearings are astronomic, derived from the
east boundary of Lot 1, Plan 22296.

Deposited in the Land Registry
Office at Prince George, B.C. this
8 day of October, 1976

LEGEND: •OIP denotes an old iron pin found.
•IP denotes an iron pin set.

"E. T. Schooley"
Registrar

N.W. 1/4 D.L. 635

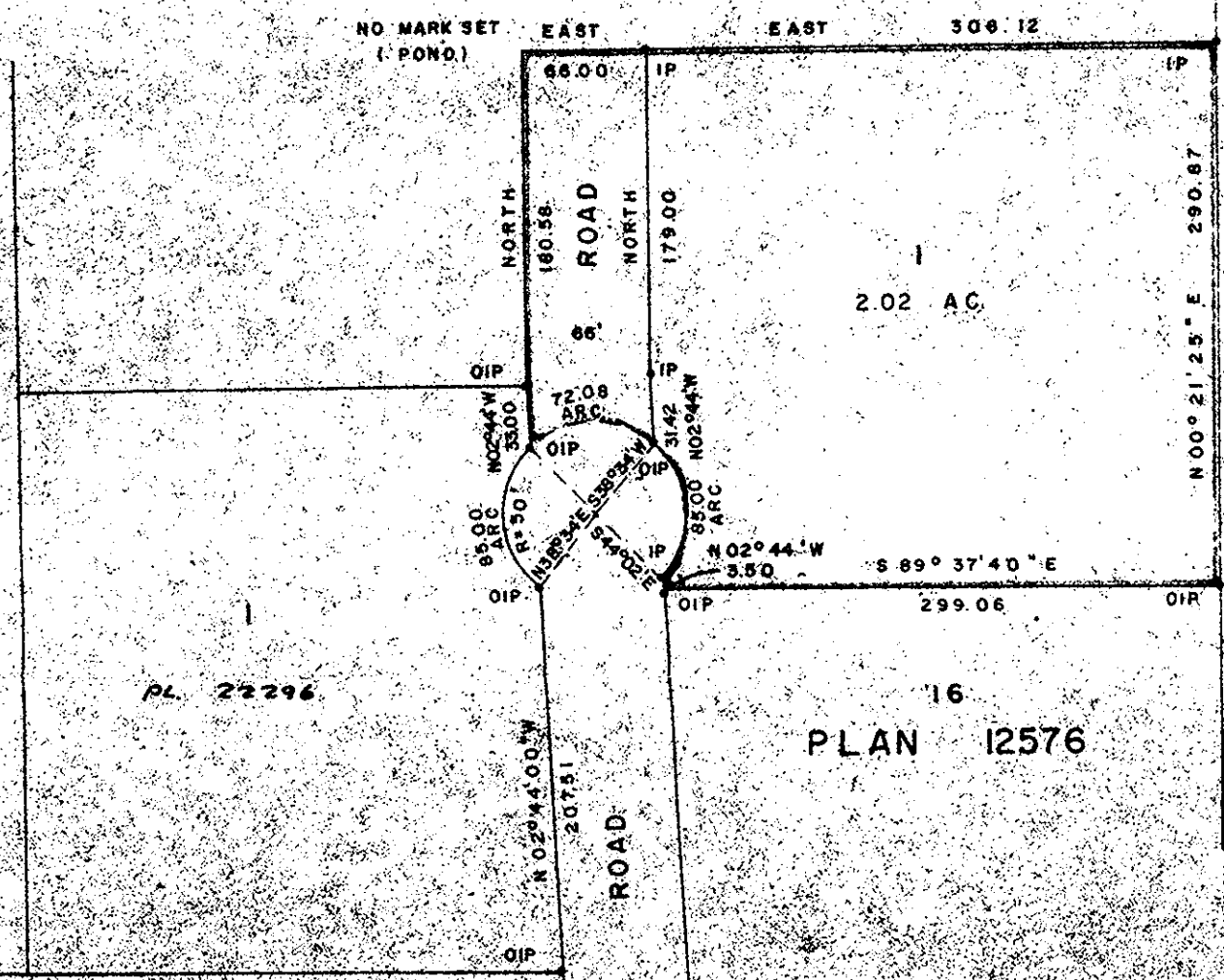
ROAD

PLAN 17485



D.L. 635
PLAN 9566

PLAN 17485
D.L. 635



PL 22296

PLAN 12576

PLAN 12576

PLAN 8921

D.L. 635

I, DONALD A. DUFFY of the City of Prince George,
a British Columbia Land Surveyor, make oath and say
that I was present at and did personally superintend
the survey represented by this plan and that the survey
and plan are correct. The said survey was completed
on the 16 day of JUNE 1976.

B. & S. HOLDINGS LTD.

Approved under the Land Registry Act
this 10 day of AUG 1976

Approving Officer, City of Prince George

Sworn before me this 24
day of JUNE 1976

B.C.L.S.

This plan lies within the Fraser-Fort George
Regional District.

A Commissioner for taking Affidavits
for British Columbia

W. D. USHER & ASSOCIATES
LAND SURVEYORS
PRINCE GEORGE B.C.
1178 7836