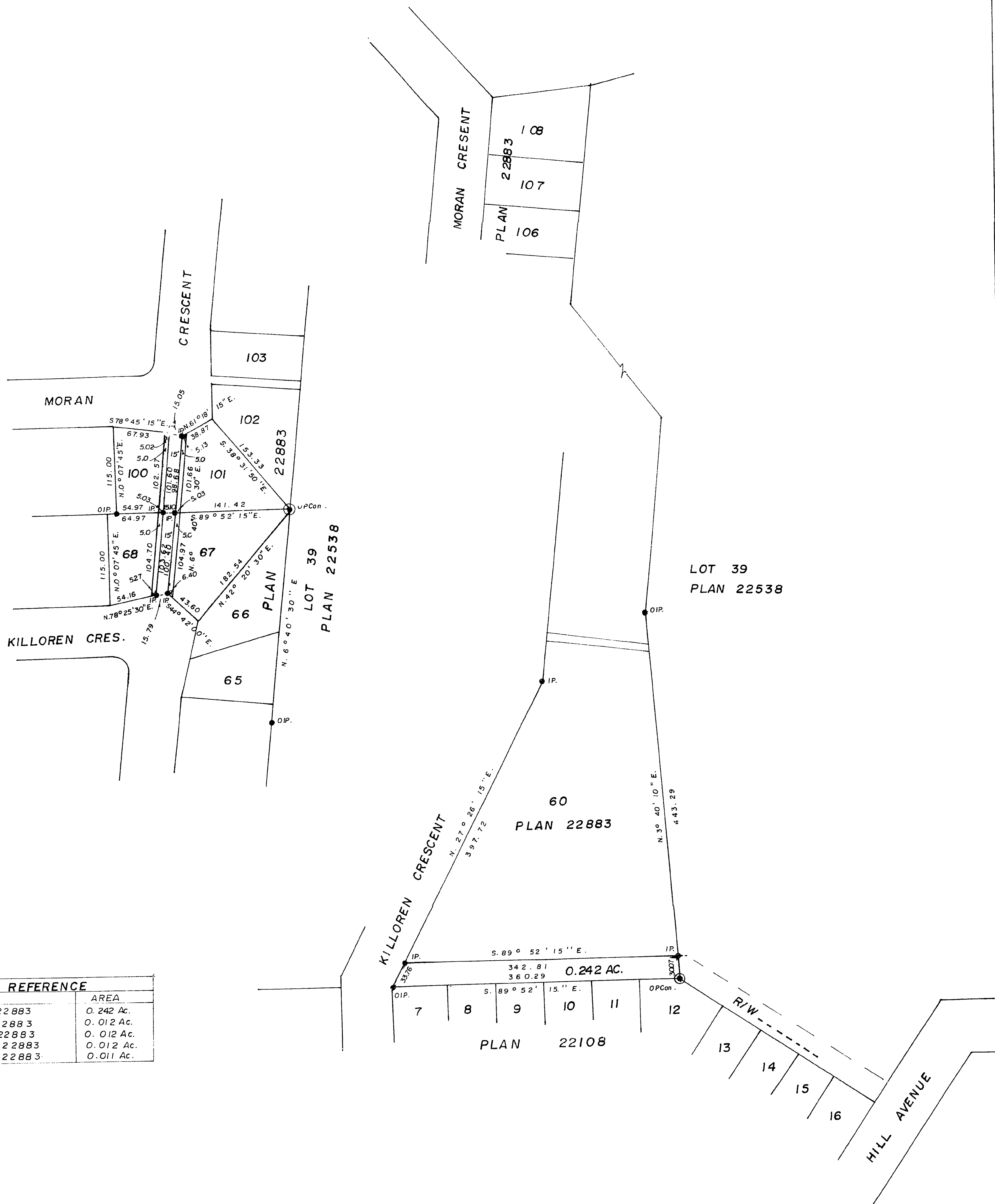


26-226



PLAN NO. **22903**

DEPOSITED IN THE LAND REGISTRY OFFICE
AT PRINCE GEORGE THIS ~~14~~ DAY OF ~~SEPTEMBER~~ 1976.

E.T. SCHOOLEY
REGISTRAR

per: *LS*

CITY of PRINCE GEORGE, B.C.

PLAN of RIGHT-of-WAY
IN LOTS 60, 67, 68, 100 and 101,
PLAN 22883, DISTRICT LOT 482,
CARIBOO DISTRICT.

Scale: 1" = 100'

BEARINGS ARE ASTROMOMIC DERIVED FROM
PLAN 22538.

- IP...STANDARD IRON POST.
- ⊙ PCON...STANDARD POST IN CONCRETE.
- ... DENOTES "CLD"

I V. BARTELL OF THE CITY OF PRINCE GEORGE
BRITISH COLUMBIA LAND SURVEYOR MAKE OATH AND
SAY THAT I WAS PRESENT AT AND DID PERSONALLY
SUPERINTEND THE SURVEY REPRESENTED BY THIS
PLAN AND THAT THE SURVEY AND PLAN ARE CORRECT.
THE SAID SURVEY WAS COMPLETED ON
THE 3 DAY OF September 1976.

Vic Barzell
V. BARTELL, B.C.L.S.

SWORN BEFORE ME AT PRINCE GEORGE, B.C.,
THIS 13 DAY OF SEPTEMBER, 1976.

A COMMISSIONER FOR TAKING AFFIDAVITS
FOR BRITISH COLUMBIA.

THIS PLAN LIES WITHIN THE FRASER FORT-
GEORGE REGIONAL DISTRICT.

McWILLIAM, WHYTE, GOBLE, & ASSOCIATES,
B.C. LAND SURVEYORS,
PRINCE GEORGE - KAMLOOPS - SMITHERS.

REF. NO. 76100-22B