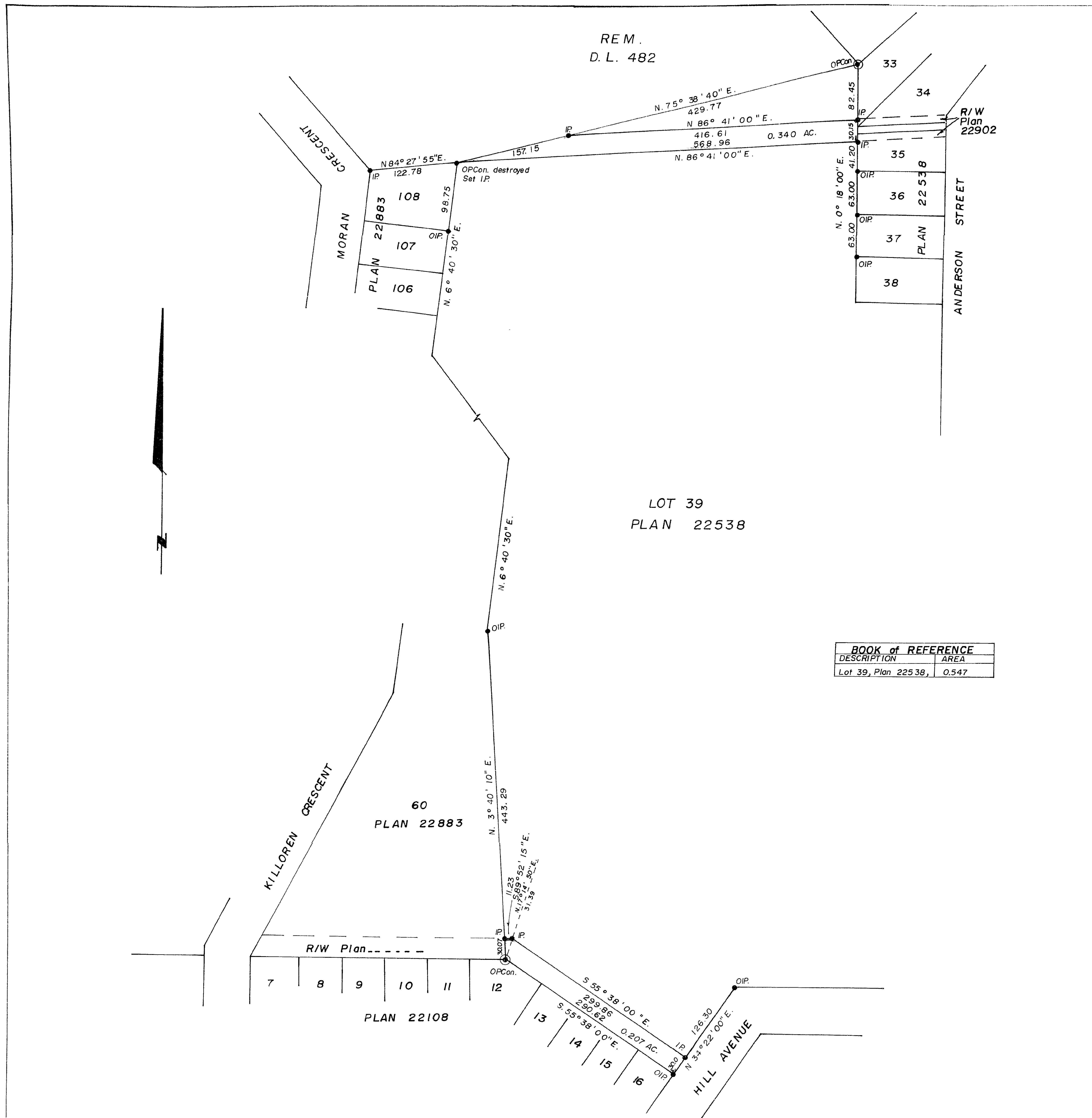


26-226



BOOK of REFERENCE	
DESCRIPTION	AREA
Lot 39, Plan 22538,	0.547

CITY of PRINCE GEORGE, B.C.

PLAN OF RIGHT-of-WAY
IN LOT 39, PLAN 22538,
DISTRICT LOT 482, CARIBOO DISTRICT.

Scale: 1" = 100'

BEARINGS ARE ASTRONOMIC DERIVED FROM PLAN 22538.

- I.P. STANDARD IRON POST.
- ⊙ O.P. CON. STANDARD POST IN CONCRETE.
- DENOTES "OLD"

I, V. BARTELL, OF THE CITY OF PRINCE GEORGE, BRITISH COLUMBIA LAND SURVEYOR MAKE OATH AND SAY THAT I WAS PRESENT AT AND DID PERSONALLY SUPERINTEND THE SURVEY REPRESENTED BY THIS PLAN AND THAT THE SURVEY AND PLAN ARE CORRECT. THE SAID SURVEY WAS COMPLETED ON THE 23 DAY OF SEPTEMBER, 1976.

V. Bartell
V. BARTELL, B.C.L.S.

SWORN BEFORE ME AT PRINCE GEORGE, B.C. THIS 23 DAY OF SEPTEMBER, 1976.

[Signature]
A COMMISSIONER FOR TAKING AFFIDAVITS FOR BRITISH COLUMBIA.

THIS PLAN LIES WITHIN THE FRASER FORT GEORGE REGIONAL DISTRICT.

Mc WILLIAM, WHYTE, GOBLE & ASSOCIATES, B.C. LAND SURVEYORS, PRINCE GEORGE - KAMLOOPS - SMITHERS

REF. NO. 76100-22A

D.L. 482