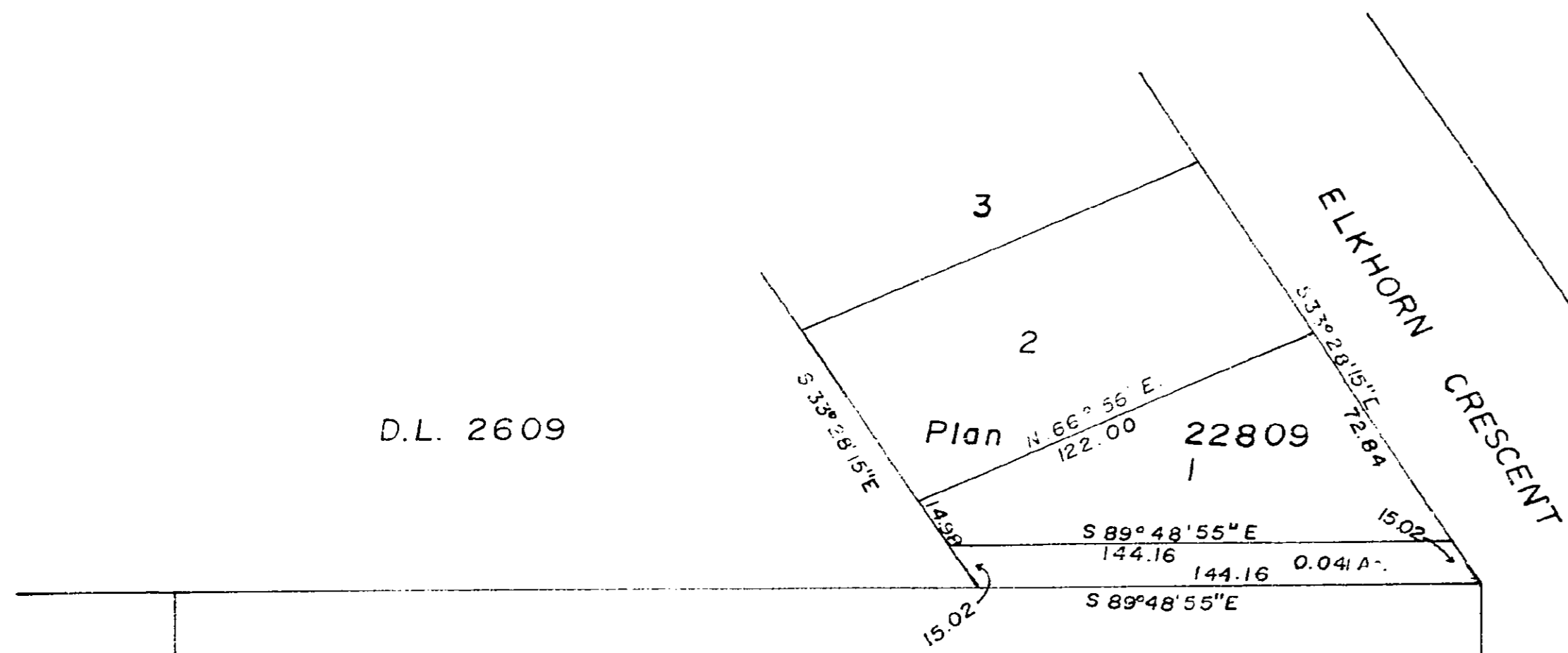
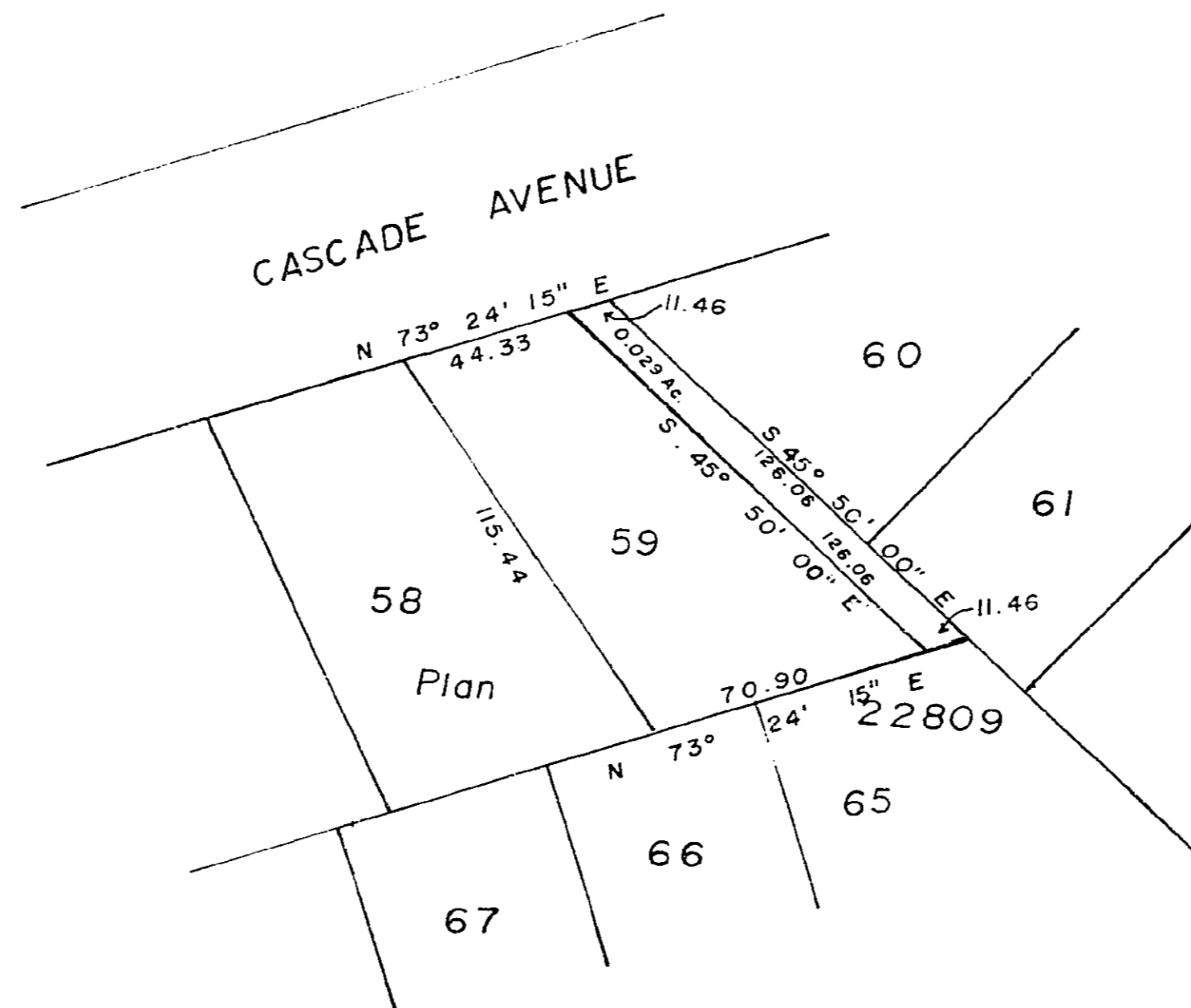
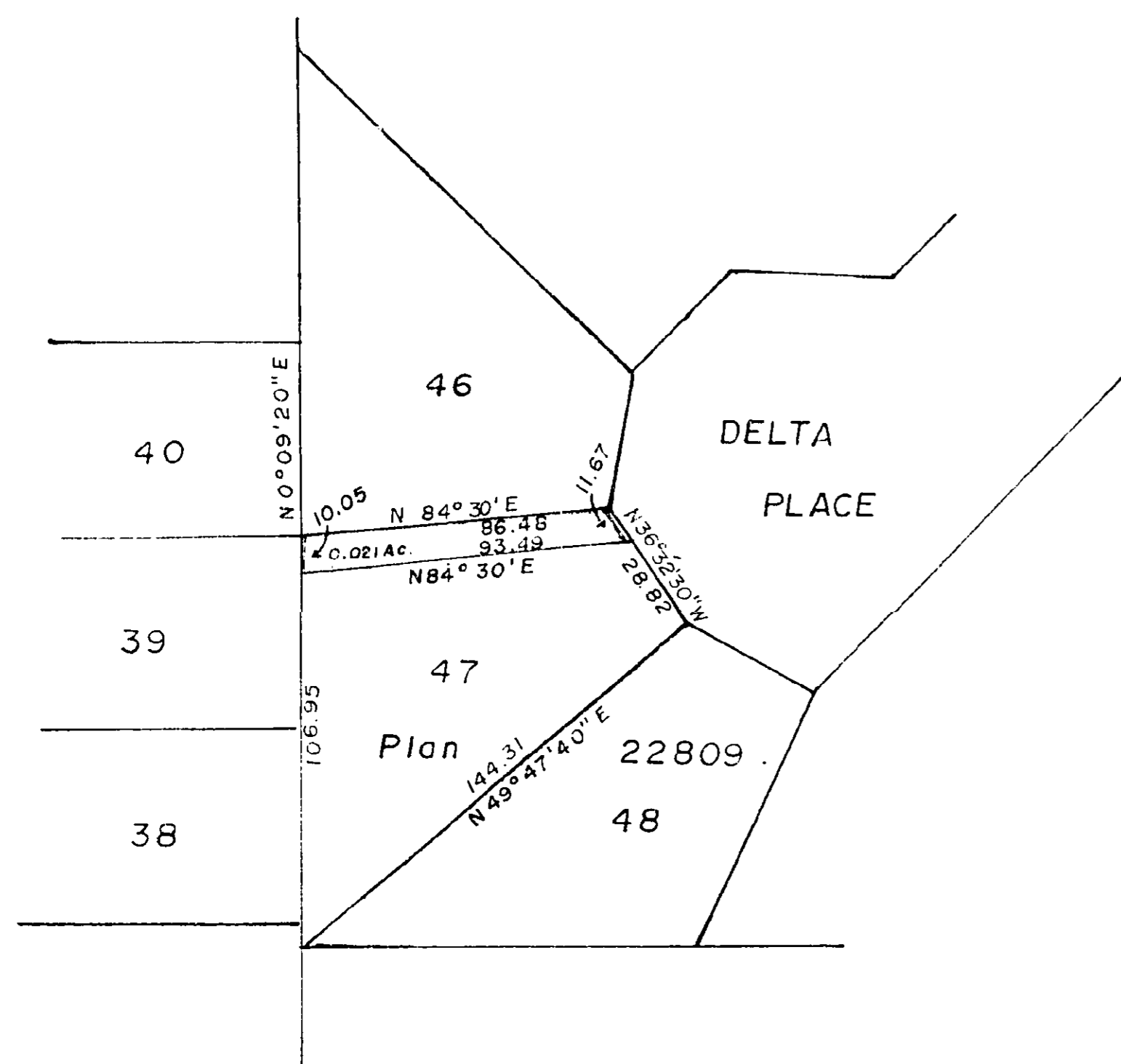
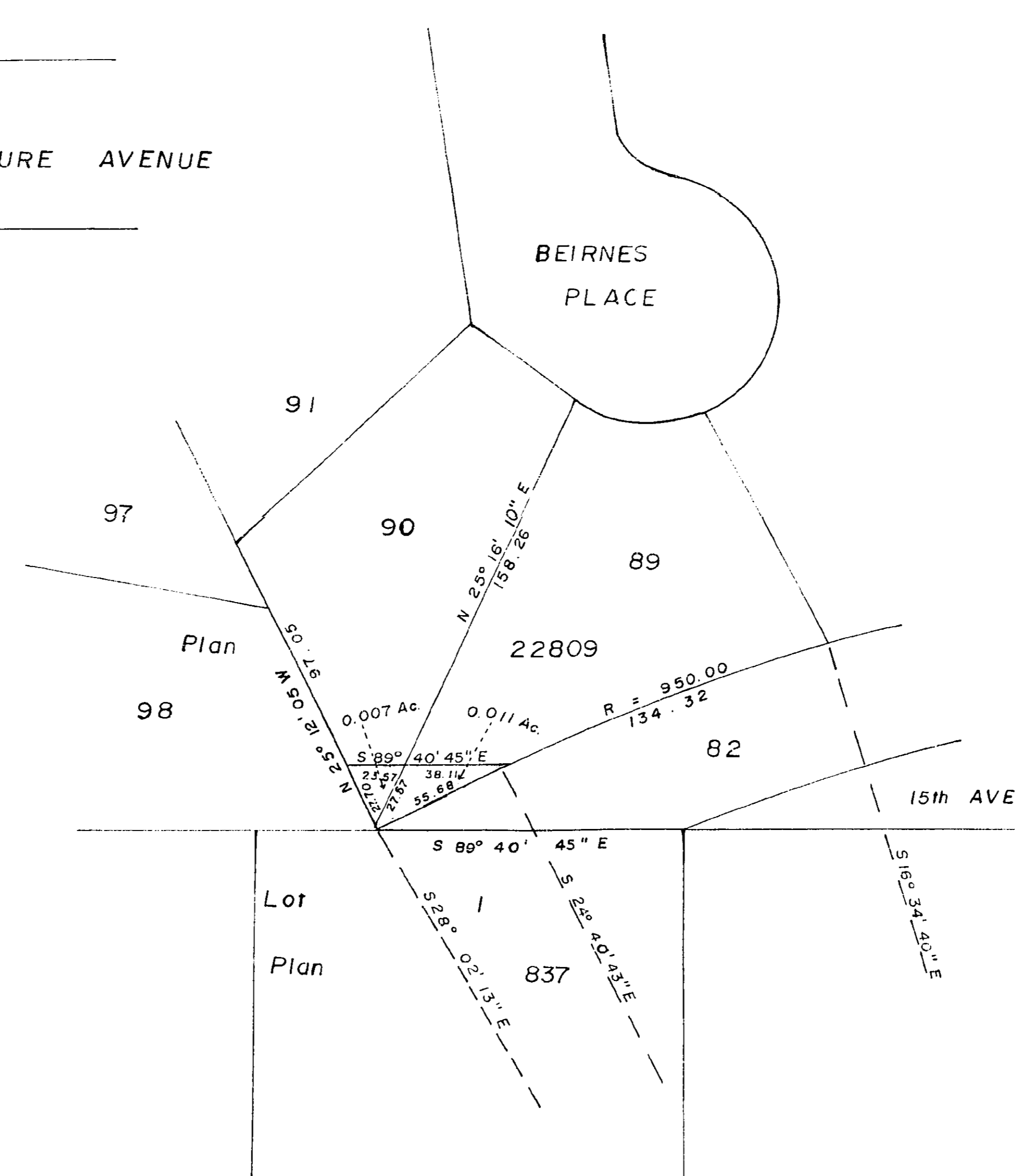


26-226



LOT B
PLAN 17284

AZURE AVENUE



PLAN NO. **22898**

DEPOSITED IN THE LAND REGISTRY OFFICE AT
PRINCE GEORGE THIS 13 DAY OF SEPTEMBER 1976

C.T. SCHOOLEY
REGISTRAR

CITY OF PRINCE GEORGE, B.C.,

EXPLANATORY PLAN OF
RIGHTS - of - WAY IN
LOTS 147, 59, 89 and 90, PLAN 22809,
DISTRICT LOTS 2609, 2507 and 2508,
CARIBOO DISTRICT

Scale: 1" = 50'

CERTIFIED CORRECT
ACCORDING TO LAND REGISTRY OFFICE RECORDS
THIS 7 DAY OF SEPTEMBER, 1976.

V. Bartell
V. BARTELL, B.C.L.S.

THIS PLAN LIES WITHIN THE FRASER
PORT GEORGE REGIONAL DISTRICT

McWILLIAM, WHYTE, GOBLE, & ASSOCIATES
B.C. LAND SURVEYORS,
PRINCE GEORGE - KAMLOOPS - SMITHERS

REF. NO. 76100-21

BOOK of REFERENCE	
DESCRIPTION	AREA
LOT 1, PLAN 22809,	0.041 AC.
LOT 47, PLAN 22809,	0.021 AC.
LOT 59, PLAN 22809,	0.029 AC.
LOT 90, PLAN 22809,	0.007 AC.
LOT 89, PLAN 22809,	0.011 AC.