

RECEIVED

SEP 14 1976

PLAN OF SUBDIVISION OF
LOT 2, PLAN 21351
DISTRICT LOT 2424
CARIBOO DISTRICT - BRITISH COLUMBIA

B.C. ASSESSMENT
AUTHORITY
PLAN N^o 22885

Deposited in the Land Registry
Office at Prince George, B.C. this
9 day of SEPTEMBER 1976

SCALE: 1" = 200'

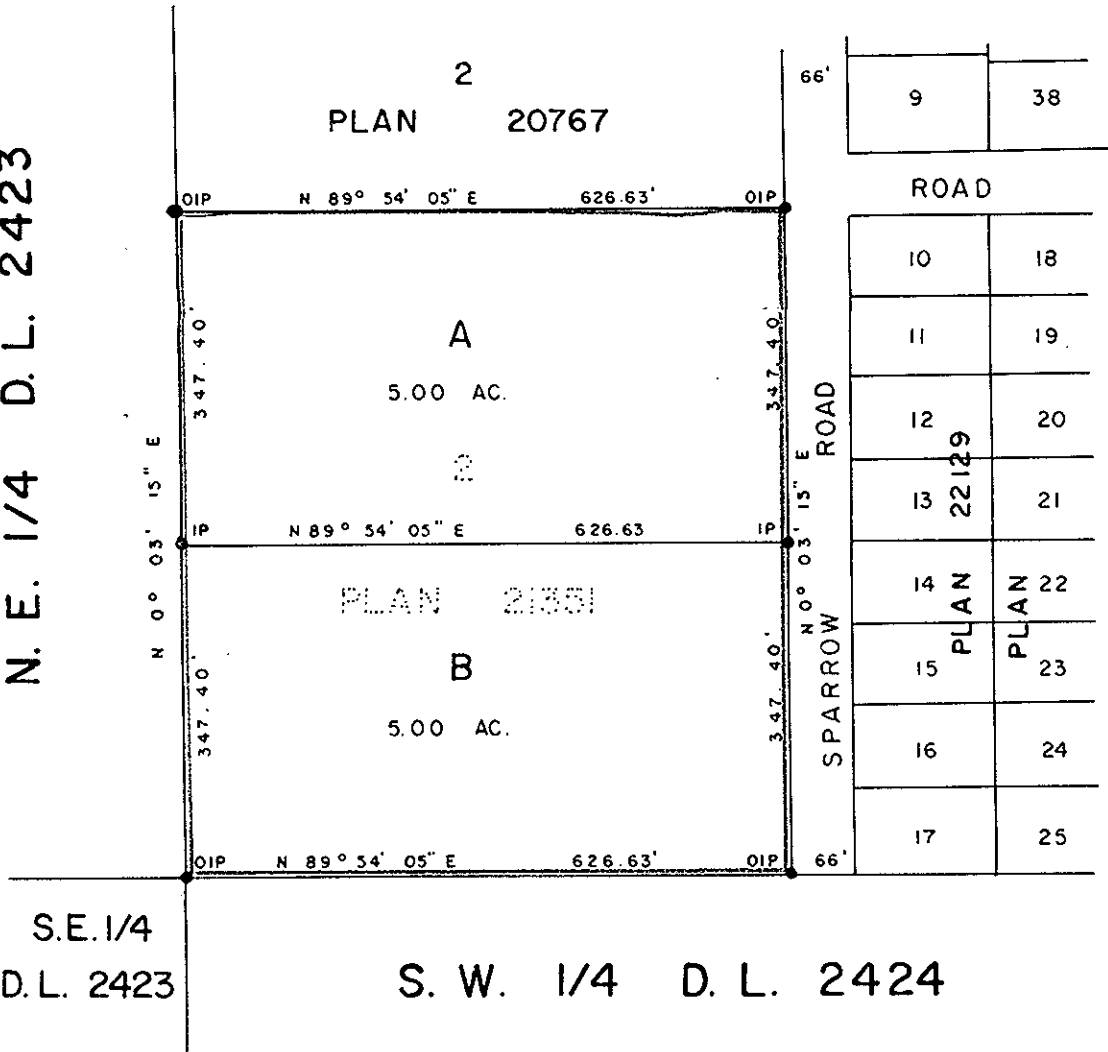
NOTE: Bearings are astronomic, derived from the
East Boundary of Lot 2, Plan 21351.

E.T. SCHOOLEY
Registrar

LEGEND: ● OIP denotes an old iron pin found.
● IP denotes an iron pin placed on this survey.



N. E. 1/4 D. L. 2423



D. L. 2424

S.E. 1/4
D.L. 2423

S. W. 1/4 D. L. 2424

I, DONALD A. DUFFY of the City of Prince George,
a British Columbia Land Surveyor, make oath and say
that I was present at and did personally superintend
the survey represented by this plan and that the survey
and plan are correct. The said survey was completed
on the 3rd day of August, 1976.

DOMAGALA HOLDINGS LTD.

Approved under the Land Registry Act,
this 12th day of AUG, 1976

[Signature]
B.C.L.S.

[Signature: Paul Domagala]

[Signature]
Approving Officer, City of Prince George.

Sworn before me this 5
day of August, 1976

[Signature: Pres.]

This plan lies within the Fraser-Fort George
Regional District.

[Signature]
A Commissioner for taking Affidavits
for British Columbia.