

K24

PLAN OF SUBDIVISION OF
LOT 2, PLAN 20960
DISTRICT LOT 937
CARIBOO DISTRICT - BRITISH COLUMBIA

PLAN No **22845**

Deposited in the Land Registry
Office at Prince George, B.C. this
9 day of August, 1976

SCALE: 1" = 40'

NOTE: Bearings are astronomic, derived from the
north boundary of lot 2, Pl. 20960

LEGEND: • OIP denotes an old iron pin found
• IP denotes an iron pin set

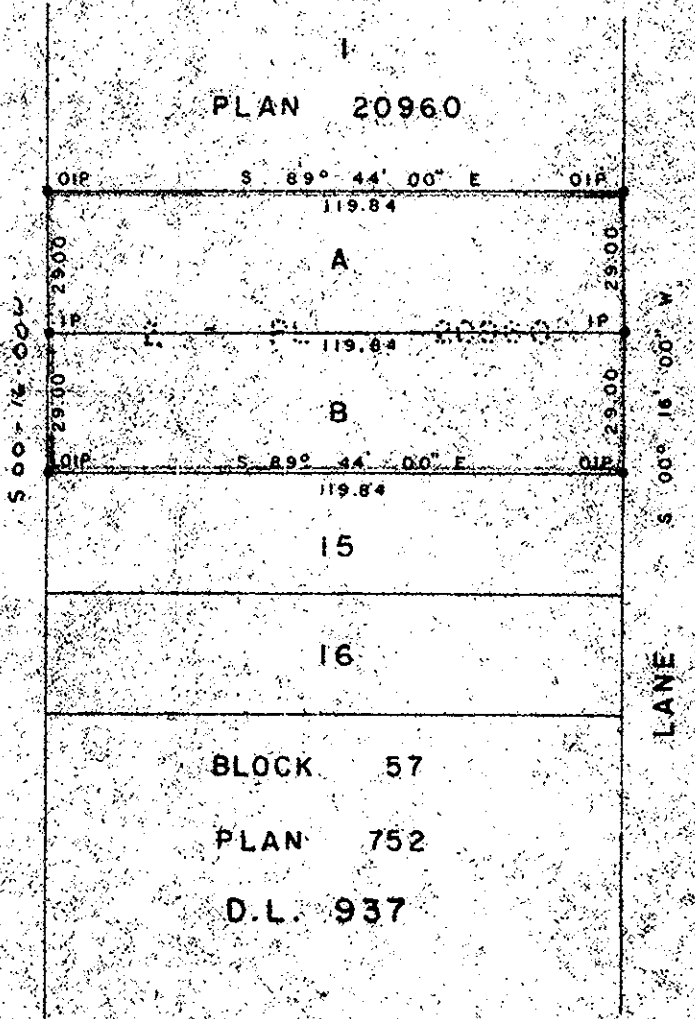
J. S. Scholery
Registrar



BLOCK 56

GILLETTE STREET

S 00° 16' 00" W



I, DONALD A. DUFFY of the City of Prince George,
a British Columbia Land Surveyor, make oath and say
that I was present at and did personally superintend
the survey represented by this plan and that the survey
and plan are correct. The said survey was completed
on the 26th day of July, 1976.

[Signature]
B.C.L.S.

Sworn before me this 5
day of August, 1976

A Commissioner for taking Affidavits
for British Columbia.

Approved under the Land Registry Act
this 4th day of AUG, 1976

[Signature]
OWNER

[Signature]
WITNESS

Approving Officer, City of Prince George

This plan lies within the Fraser-Fort George
Regional District.