

PLAN OF SUBDIVISION OF PARTS OF  
 N. E. 1/4 DISTRICT LOT 754 &  
 N. 1/2 OF N. W. 1/4 DISTRICT LOT 754  
 CARIBOO DISTRICT—BRITISH COLUMBIA

SCALE: 1" = 100'

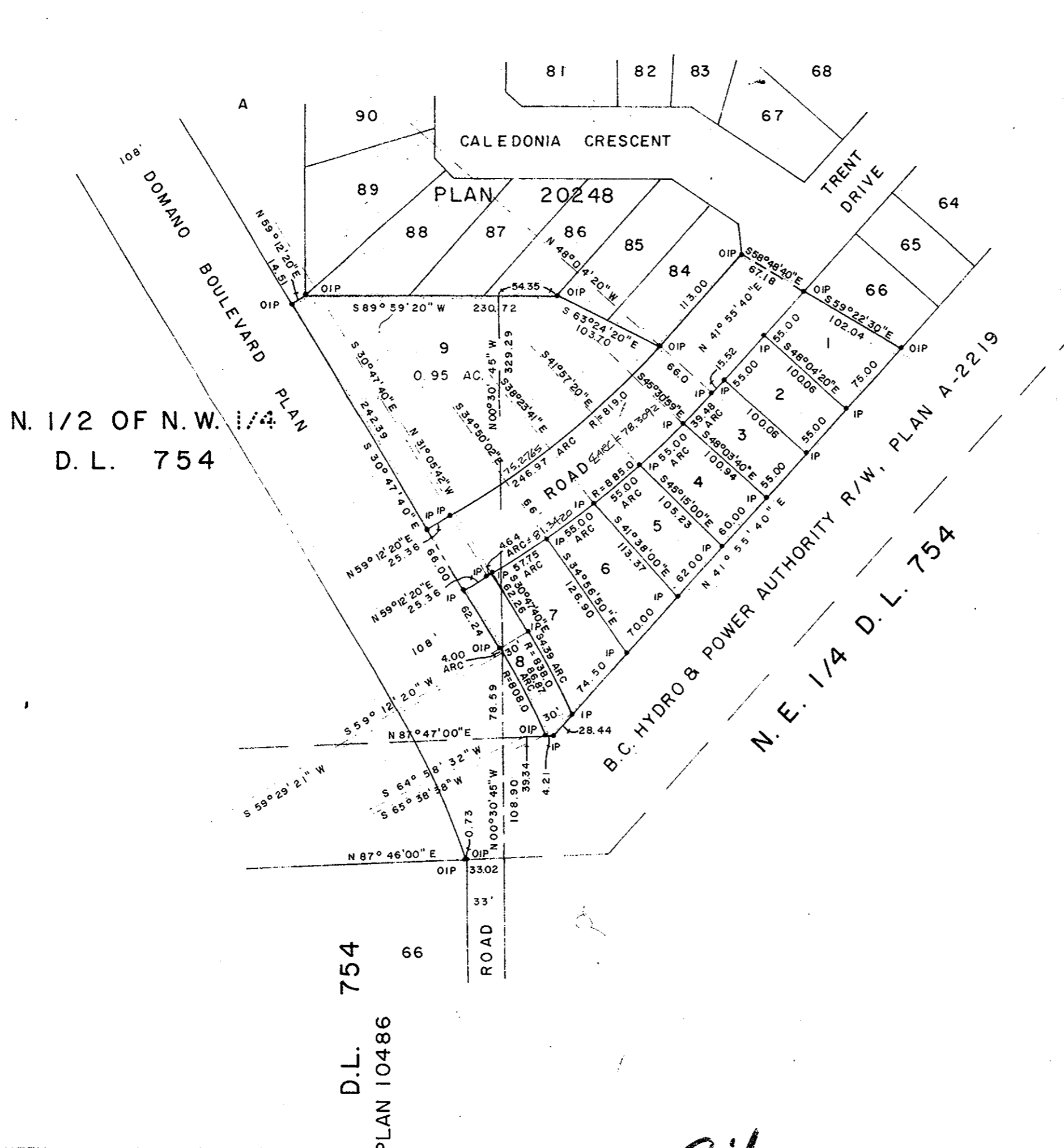
NOTE: Bearings are astronomic, derived from the southeasterly boundary of Lot 84, Plan 20248.

LEGEND: •OIP denotes an old iron pin found.  
 •IP denotes an iron pin set.

PLAN No 22835

Deposited in the Land Registry  
 Office of Prince George, B.C. this  
 29. day of JULY 1976

"E. T. Schooley"  
 Registrar



Δ 17°16'40  
 R 259,690  
 T 40,387  
 ARC 78,310

I, DONALD A. DUFFY of the City of Prince George, a British Columbia Land Surveyor, make oath and say that I was present at and did personally superintend the survey represented by this plan and that the survey and plan are correct. The said survey was completed on the 10th day of May 1976.

*[Signature]*  
 B.C.L.S.

Sworn before me this 22 day of MAY 1976

*[Signature]*  
 A Commissioner for taking Affidavits for British Columbia.

HEIGHTS LAND DEVELOPMENT CO. LTD.

*[Signature]*  
*[Signature]*

Approved under the Land Registry Act this 31st day of MAY 1976

*[Signature]*  
 Approving Officer, City of Prince George

This plan lies within the Fraser-Fort George Regional District