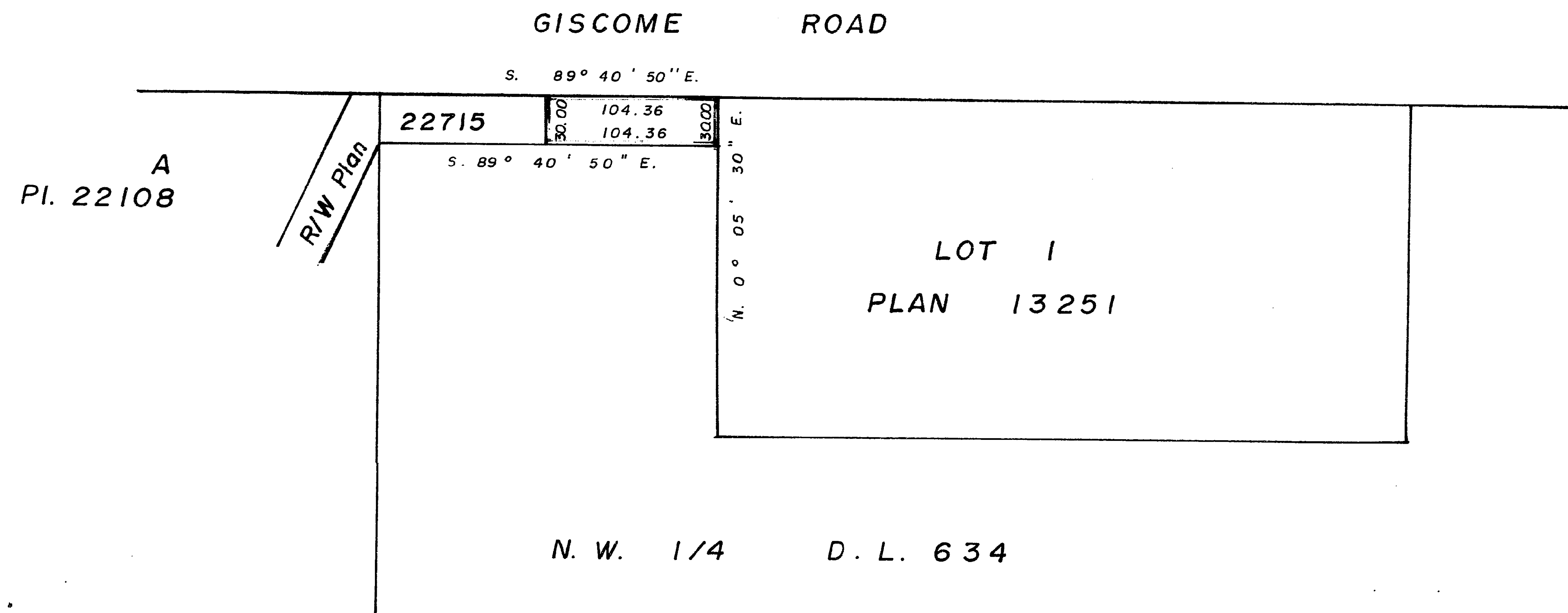


26

CITY of PRINCE GEORGE, B.C.
 EXPLANATORY PLAN TO ALTER RIGHT of WAY, PLAN 22715,
 SHOWING RIGHT-of-WAY TO BE RELEASED OUTLINED IN
 RED, THROUGH REMAINDER N.W. 1/4 D.L. 634,
 CARIBOO DISTRICT.
 Scale: 1" = 100'

PLAN NO. 22827
 DEPOSITED IN THE LAND REGISTRY OFFICE AT
 PRINCE GEORGE THIS 23 DAY OF JULY 1976.

"E.T. Schookey"
 REGISTRAR



CERTIFIED CORRECT
 ACCORDING TO LAND REGISTRY OFFICE RECORDS
 THIS 23 DAY OF JULY, 1976.

D. Keown
 D. KEOWN, B.C.L.S.

BOOK OF REFERENCE	
Area to be released	
N.W. 1/4 D.L. 634	0.07 Ac.

THIS PLAN LIES WITHIN THE FRASER FORT-
 GEORGE REGIONAL DISTRICT.

McWILLIAM, WHYTE, GOBLE, & ASSOCIATES,
 B.C. LAND SURVEYORS,
 PRINCE GEORGE - KAMLOOPS - SMITHERS

REF. NO. 76100-8D

D.L. 634