

26-226

PLAN OF SUBDIVISION OF
LOTS 11 TO 13 INCLUSIVE, PLAN 20574

8 PARTS OF LOT G, PLAN 18926 & LOT C, PLAN 16737
DISTRICT LOT 4040
CARIBOO DISTRICT - BRITISH COLUMBIA

SCALE: 1" = 50'

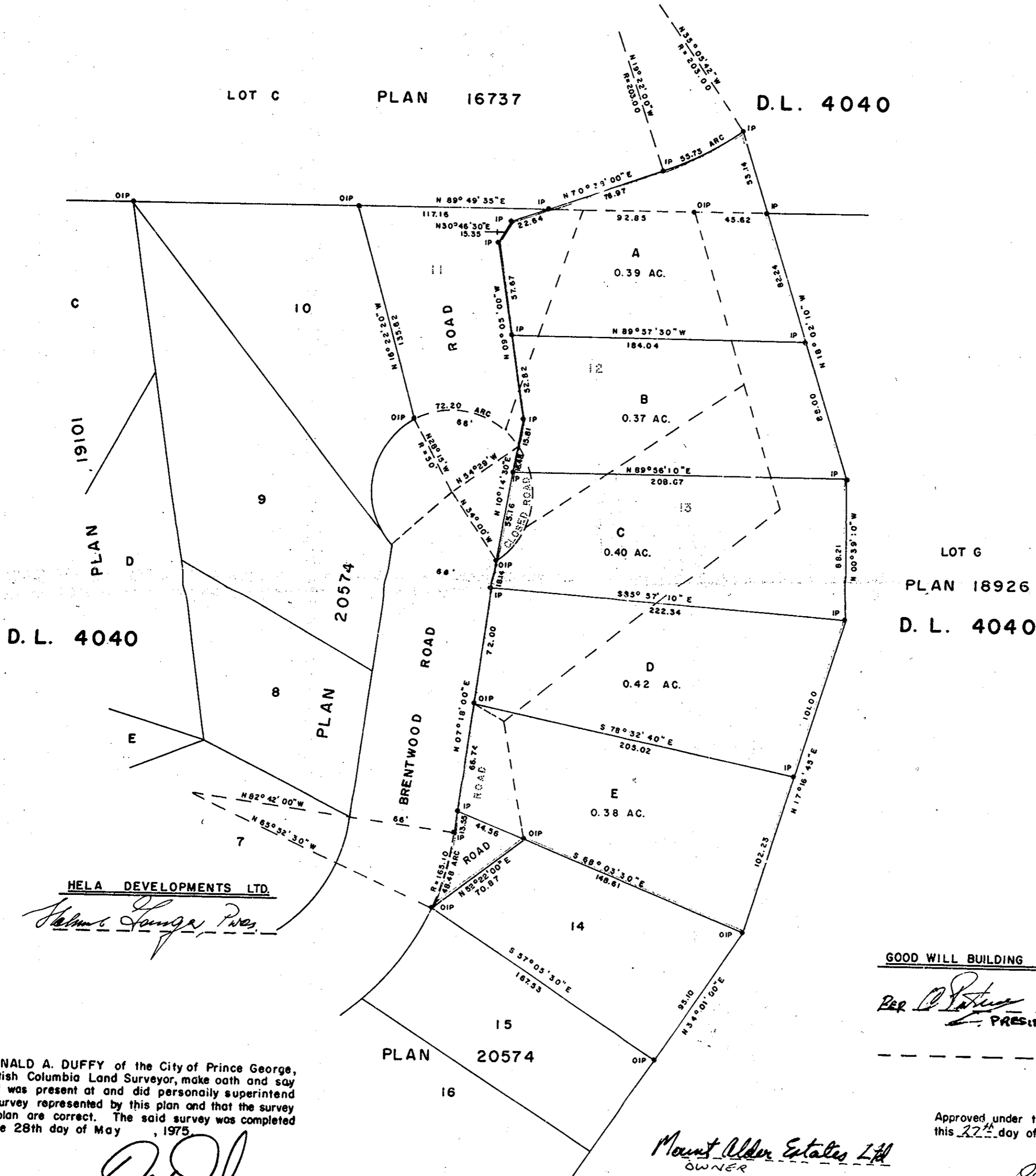
NOTE: Bearings are astronomic, derived from the south
boundary of Lot C, Plan 16737, as shown on
Plan 20574.

LEGEND: •OIP denotes an old iron pin found.
•IP denotes an iron pin set.

PLAN No 22818

Deposited in the Land Registry
Office at Prince George, B.C. this
21 day of JULY, 1976

"E. T. Schooley"
Registrar per. of



HELA DEVELOPMENTS LTD.

Helma Louisa Pres.

GOOD WILL BUILDING CONTRACTORS LTD.

Per. O. P. ...
PRESIDENT

I, DONALD A. DUFFY of the City of Prince George,
a British Columbia Land Surveyor, make oath and say
that I was present at and did personally superintend
the survey represented by this plan and that the survey
and plan are correct. The said survey was completed
on the 28th day of May, 1975.

D. A. Duffy
B.C.L.S.

Sworn before me this 2 day of JUNE, 1975.

W. L. ...
A Commissioner for taking Affidavits
for British Columbia.

Mount Alder Estates Ltd
OWNER

W. D. Usher & Associates
WITNESSES

Approved under the Land Registry Act
this 22nd day of FEB, 1976

W. D. Usher
Approving Officer, City of Prince George
Reapproved JUNE 4, 1976

This plan lies within the Fraser-Fort George
Regional District.

W. D. USHER & ASSOCIATES
LAND SURVEYORS
PRINCE GEORGE - B.C.
HR 54 5362 A