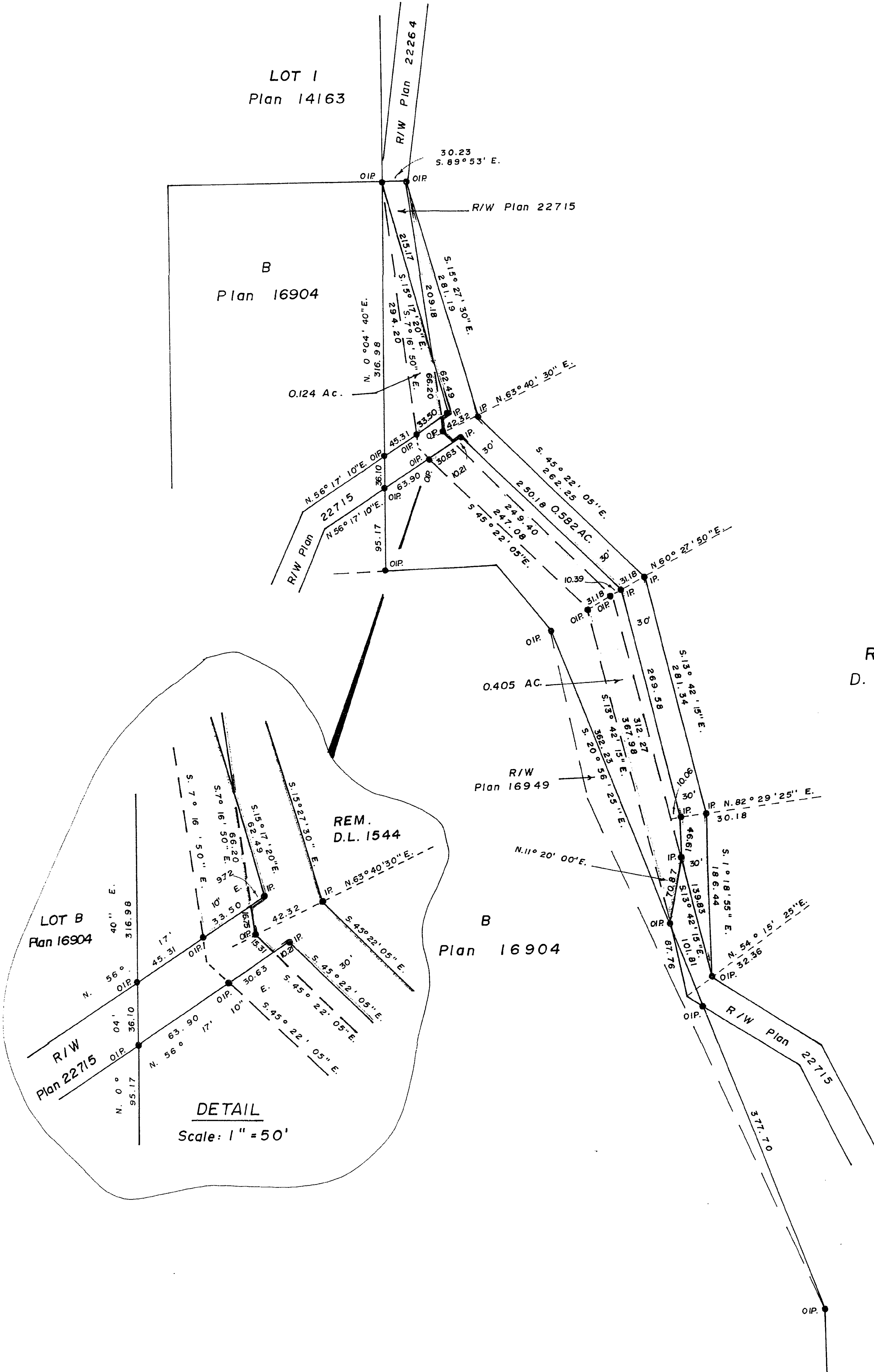


26-226



REM.
D.L. 1544

DETAIL
Scale: 1" = 50'

BOOK of REFERENCE	
for acquired R/W outlined in red.	
Rem. D.L. 1544	0.582 Ac.
for released R/W outlined in green	
Rem. D.L. 1544	0.529 Ac.

22810

PLAN NO. _____
Deposited in the Land Registry Office at
Prince George this 20 day of July 1976

M. T. Schooley
Registrar p.c.

CITY of PRINCE GEORGE, B.C.

PLAN TO ALTER RIGHT-OF-WAY PLAN 22715
SHOWING RIGHT OF WAY TO BE ACQUIRED
OUTLINED IN RED, AND RIGHT-OF-WAY TO BE
RELEASED OUTLINED IN GREEN, THROUGH
REMAINDER D.L. 1544, CARIBOO DISTRICT.

SCALE: 1" = 100'

Bearings are astronomic derived from
Plan 22715.

- IP..... Standard Iron Post.
- Denotes "old."

I, V. Bartell, of the City of Prince George,
British Columbia Land Surveyor make oath and
say that I was present at and did personally
superintend the survey represented by this plan
and that the survey and plan are correct.
The said survey was completed on
the 13 day of July 1976.

V. Bartell
V. Bartell, B.C. L.S.

Sworn before me at Prince George
this 13 day of July, 1976.

[Signature]
A Commissioner for taking affidavits
for British Columbia.

Approved under the Land Registry Act
this ____ day of _____ 19____.

Approving Officer
City of Prince George

This plan lies within the Fraser
Fort-George Regional District.

McWilliam, Whyte, Goble, & Associates,
B.C. Land Surveyors,
Prince George - Kamloops - Smithers.

REF. NO. 76100-8

D.L. 1544