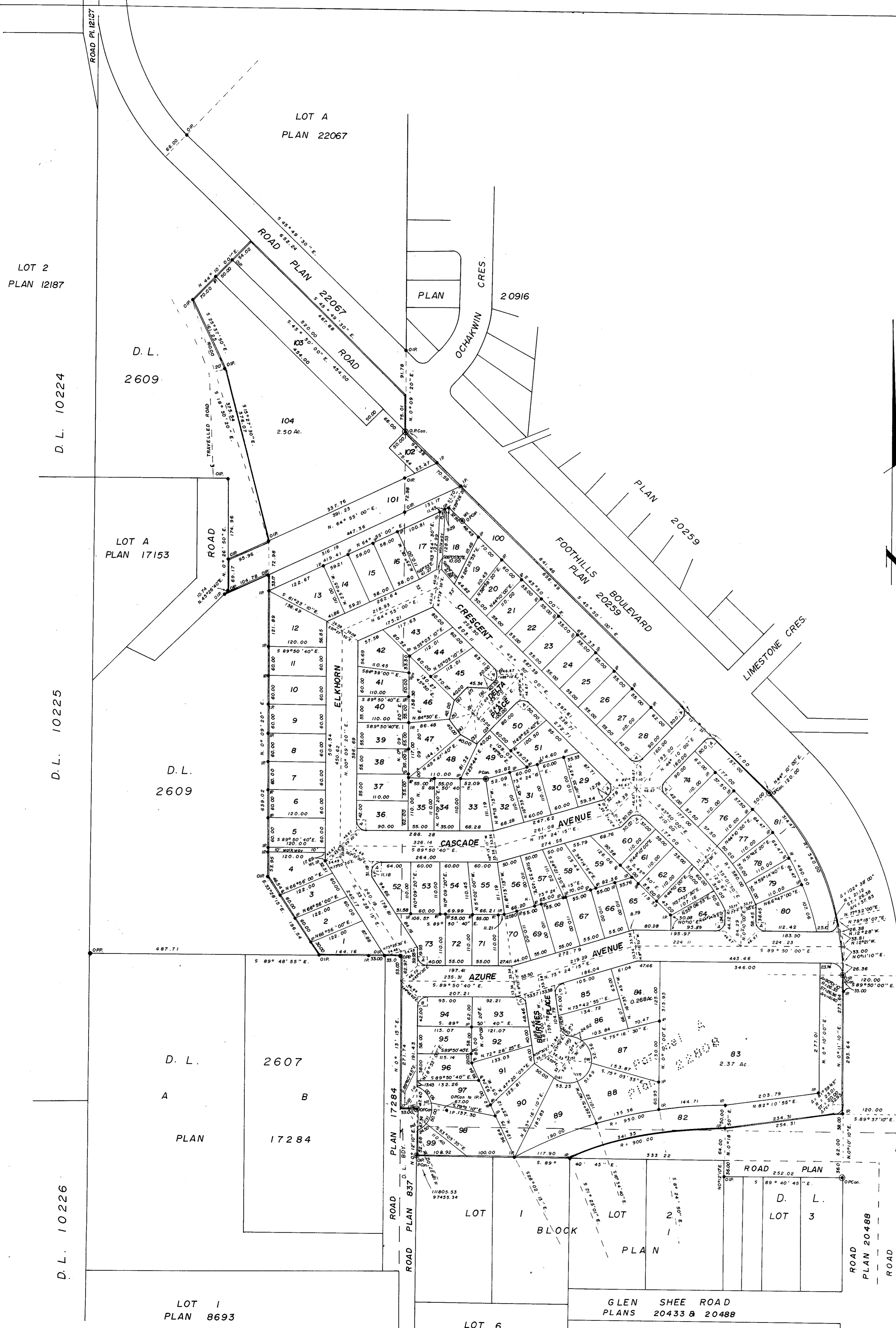


"E. J. Scholay"  
 REGISTRAR



PLAN OF SUBDIVISION  
 OF PARCEL A, PLAN 22808,  
 DISTRICT LOTS 2609, 2507, and 2508,  
 CARIBOO DISTRICT.

SCALE: 1" = 100'

SUBJECT TO THE CONDITIONS IMPOSED BY MY ORDER DATED MARCH 15, 1976  
 I ALLOW THIS SUBDIVISION TO BE MADE AND EVIDENCED IN THE MANNER PRESCRIBED  
 BY SECTION 80(19), LAND REGISTRY ACT, CHAPTER 171, R.S.B.C., 1948.

DATED AT VICTORIA, B.C., THIS 15<sup>TH</sup> DAY OF MARCH, 1976.

INSPECTED THIS 22<sup>ND</sup> DAY  
 OF JULY 1976.  
 V. BARTELL, B.C.L.S.

ACTING SURVEYOR - GENERAL

THE CONDITIONS OF THE ABOVE MENTIONED ORDER ARE ACCEPTED.  
 NAME OF SUBDIVIDER: CITY OF PRINCE GEORGE.

THE ORDER OF THE SURVEYOR - GENERAL DATED MARCH 15, 1976  
 HAS BEEN FILED IN THE LAND REGISTRY OFFICE, PRINCE GEORGE, B.C.  
 AS NUMBER L 18720 A.

"E. J. Scholay"  
 REGISTRAR OF TITLES

AREA WITHIN RED OUTLINE = 32.14 Ac.

ST.	BEARING	DISTANCE	ST.	BEARING	DISTANCE
A	20.00	20.00	90°00'00"	31.42	
B	20.02	20.00	89°56'05"	31.42	
C	17.20	20.00	88°35'45"	29.60	
D	23.25	20.00	81°24'15"	33.03	
E	26.92	20.00	73°13'02"	34.40	

BEARING	CUL - DE - SAC DATA	BEARING	DISTANCE
1-2	S 45° 50' 00" E. 50.00	10-11	N 88° 53' 00" E. 50.00
1-3	S 7° 10' 28" E. 64.03	10-13	N 89° 40' 40" E. 50.00
1-4	S 31° 27' 50" W. 51.25	10-14	S 48° 31' 40" E. 50.00
1-5	S 77° 06' 05" W. 51.88	10-16	S 37° 00' W. 50.00
1-6	W 57° 08' 40" W. 50.99	10-18	S 83° 00" E. 50.00
1-7	N 14° 52' 15" W. 28.31	15-17	S 24° 00" E. 50.00
1-8	N 29° 14' 05" E. 62.10	15-19	S 83° 00" E. 50.00
2-3	S 44° 10' 00" W. 40.00	15-20	N 8° 47' E. 50.00
3-4	N 60° 18' 40" W. 40.00		
4-5	N 36° 35' 30" W. 40.00		
5-6	N 11° 09' 00" E. 40.00		
6-7	N 44° 10' 00" E. 40.00		
7-8	S 87° 15' 30" E. 45.54		
8-9	N 44° 10' 00" E. 40.00		

BEARINGS ARE ASTROMOMIC DERIVED FROM  
 PLAN 22808  
 • IP ..... STANDARD IRON POST.  
 • SP ..... STANDARD PIPE POST.  
 • CIP ..... CAPPED IRON POST  
 • PCOn ..... STANDARD CONCRETE POST.  
 • O ..... DEVICES "CLD"

V. BARTELL, OF THE CITY OF PRINCE GEORGE,  
 BRITISH COLUMBIA LAND SURVEYOR, MAKE OATH AND  
 SAY THAT I WAS PRESENT AT AND DID PERSONALLY  
 SUPERINTEND THE SURVEY REPRESENTED BY THIS PLAN  
 AND THAT THE SURVEY AND PLAN ARE CORRECT.  
 THE SAID SURVEY WAS COMPLETED ON  
 THE 12<sup>TH</sup> DAY OF JULY 1976.

V. BARTELL, B.C.L.S.

SWORN BEFORE ME AT PRINCE GEORGE, B.C.  
 THIS 12<sup>TH</sup> DAY OF JULY 1976.

A COMMISSIONER FOR TAKING AFFIDAVITS  
 FOR BRITISH COLUMBIA.

THIS PLAN LIES WITHIN THE FRASER FORT-  
 GEORGE REGIONAL DISTRICT.

McWILLIAM, WHITE, GOBLE, & ASSOCIATES,  
 B.C. LAND SURVEYORS,  
 PRINCE GEORGE - KAMLOOPS - SMITHERS.  
 REF. NO. 75100-IC (DL 2609, 2507, 2508,)

95  
 D.L. 2507

15TH AVENUE  
 17638

2508  
 LOT 1  
 BLOCK 2  
 837

APPROVED, UNDER THE LAND REGISTRY ACT  
 ON THE 12<sup>TH</sup> DAY OF MARCH 1976.

C. E. Obit  
 APPROVING OFFICER

RE-APPROVED UNDER THE LAND REGISTRY ACT  
 ON THE 12<sup>TH</sup> DAY OF JULY 1976.

C. E. Obit  
 APPROVING OFFICER

THE SEAL OF THE CITY OF PRINCE GEORGE  
 WAS AFFIXED HERE TO IN PRESENCE OF

MAYOR  
 CITY CLERK