

RECEIVED

AUG 3 1976

EXPLANATORY PLAN OF PART OF
LOT 21, PLAN 21607
DISTRICT LOT 2611
CARIBOO DISTRICT—BRITISH COLUMBIA

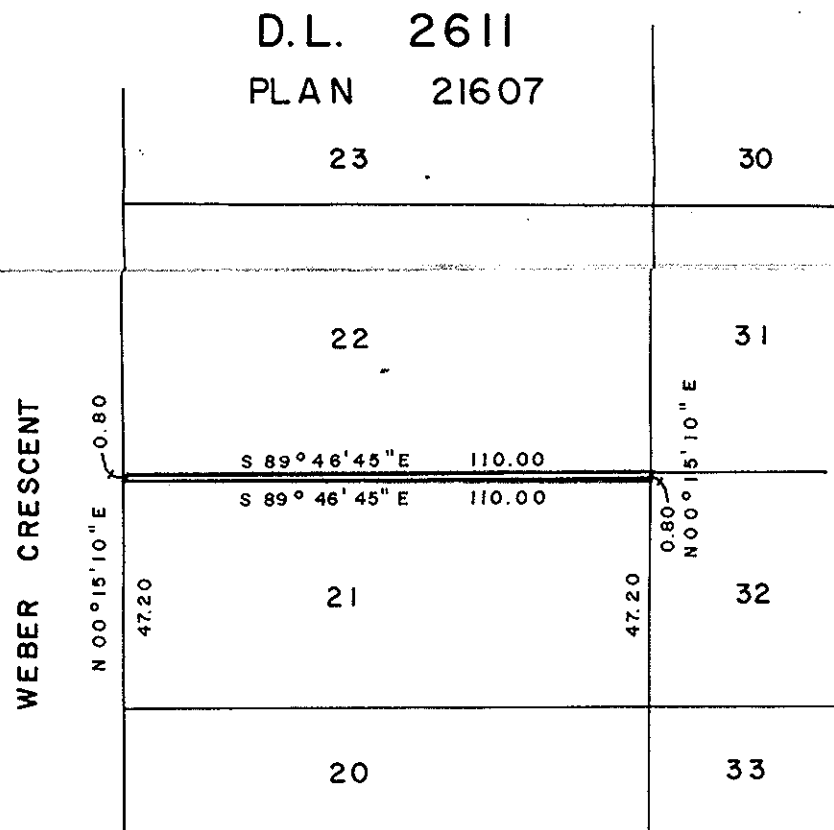
B.C. ASSESSMENT
AUTHORITY

PLAN No 22807
Deposited in the Land Registry
Office at Prince George, B. C. this
15 day of July, 1976.

SCALE: 1" = 40'

NOTE: Bearings are astronomic, derived
from Plan 21607.

"E. J. Schaeley"
Registrar



Approved under the Land Registry Act,
this 22nd day of JAN, 1976

[Signature]
Approving Officer, City of Prince George

This plan lies within the Fraser-Fort George
Regional District.

CERTIFIED CORRECT
According to measurements shown on
Plan 21607.
This 15 day of JAN, 1976.

[Signature]
D.A. DUFFY, B.C.L.S.

W.D. USHER & ASSOCIATES
LAND SURVEYORS
PRINCE GEORGE—B.C.