

R/W 21.6.76. 13

PLAN OF SUBDIVISION OF PART OF S.W. 1/4 DISTRICT LOT 4031 CARIBOO DISTRICT - BRITISH COLUMBIA

SCALE: 1" = 200'

NOTE: Bearings are astronomic, derived from the east boundary of S.W. 1/4 D.L. 4031, as shown on Plan 18490.

LEGEND: • OPP denotes an old pipe post found.
• OIP denotes an old iron pin found.
• IP denotes an iron pin set.

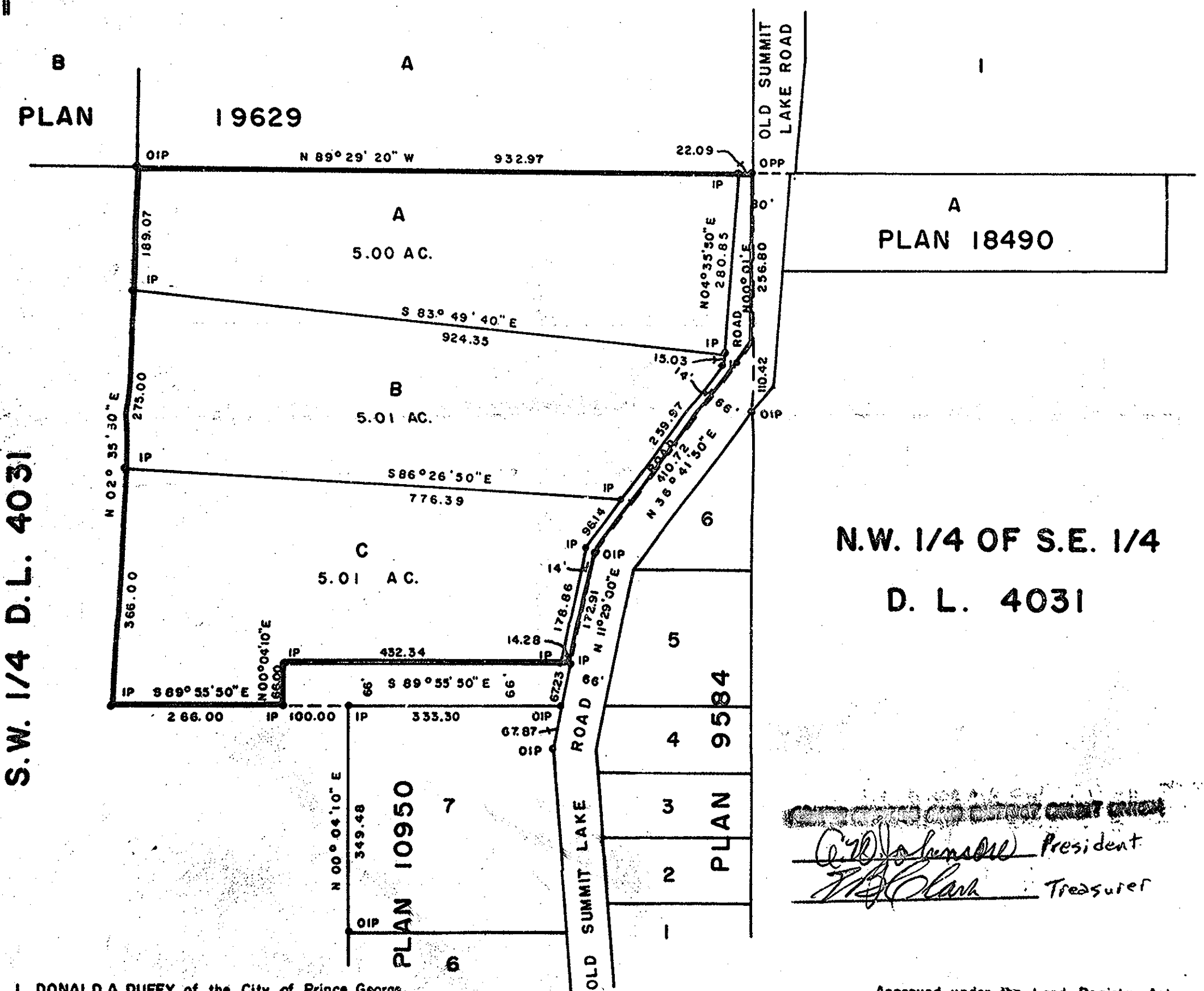
PLAN NR **22794**

Deposited in the Land Registry Office at Prince George, B.C. this 7 day of July, 1976

"E. T. Schooley"
Registrar



D. L. 4031



S.W. 1/4 D.L. 4031

N.W. 1/4 OF S.E. 1/4
D. L. 4031

[Signature] President
[Signature] Treasurer

I, DONALD A. DUFFY of the City of Prince George, a British Columbia Land Surveyor, make oath and say that I was present at and did personally superintend the survey represented by this plan and that the survey and plan are correct. The said survey was completed on the 10 day of July, 1976.

Approved under the Land Registry Act this 20 day of NOVEMBER, 1976

[Signature]
[Signature]