

PLAN OF SUBDIVISION OF PART OF
 LOT 2, PLAN 9902
 DISTRICT LOT 2013
 CARIBOO DISTRICT— BRITISH COLUMBIA
 SCALE: 1" = 100'

NOTE: Bearings are astronomic, derived from the east
 boundary of Lot 2, Plan 9902 as shown on Plan 22674

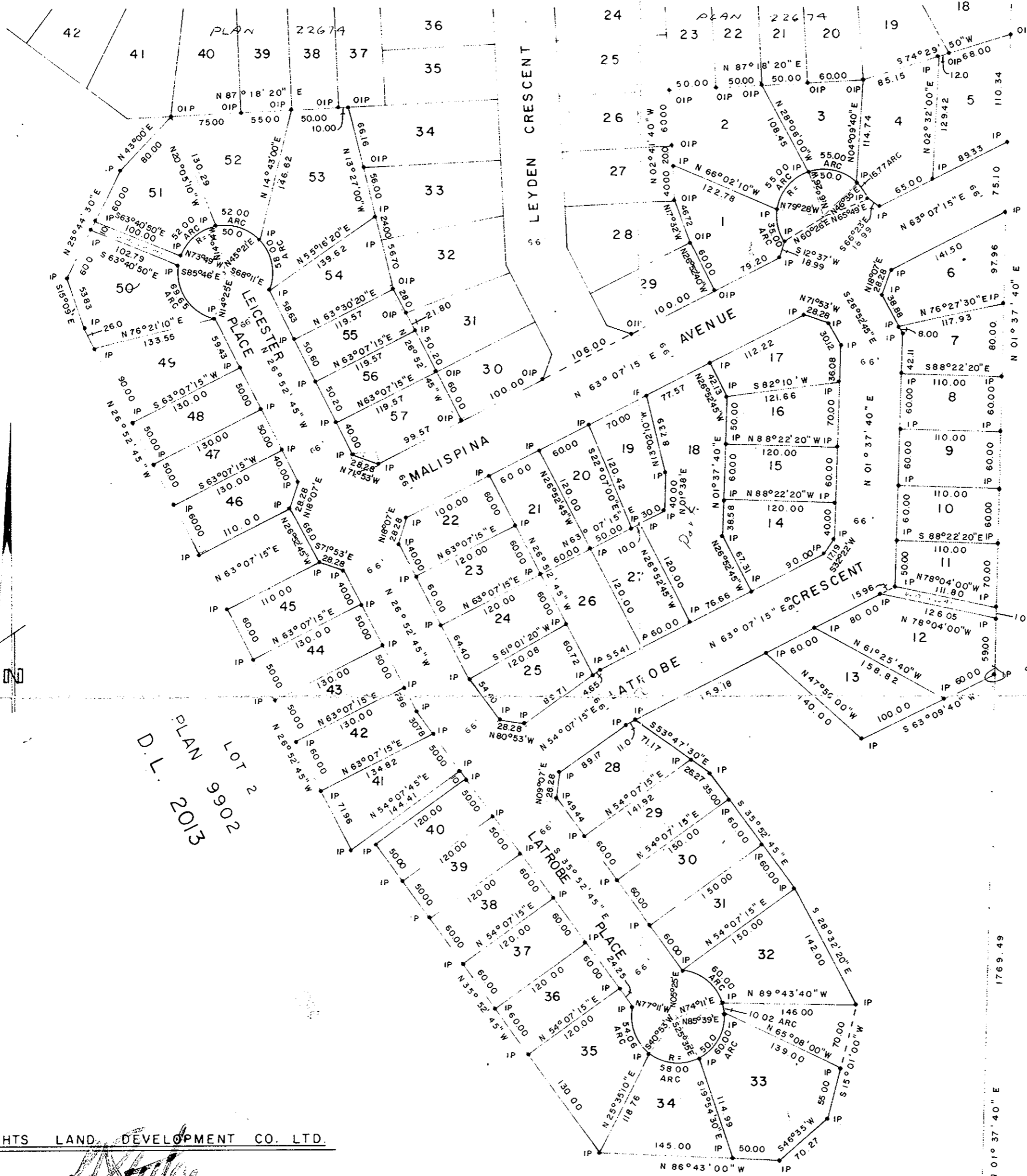
LEGEND: • OPP denotes an old pipe post found.
 • OIP denotes an old iron pin found.
 • IP denotes an iron pin set.

Plotted (JD)
 HD

PLAN No 22746

Deposited in the Land Registry
 Office at Prince George, B.C. this
 10 day of JUNE, 1976

"E.J. Schawley"
 Registrar per CK



PLAN LOT 2
 D.L. 2013

D.L. 2013

HEIGHTS LAND DEVELOPMENT CO. LTD.

[Handwritten signatures]

LOT 2
 PLAN 9902
 D.L. 2013

D.L. 2012

I, DONALD A. DUFFY of the City of Prince George,
 a British Columbia Land Surveyor, make oath and say
 that I was present at and did personally superintend
 the survey represented by this plan and that the survey
 and plan are correct. The said survey was completed
 on the _____ day of _____, 1976

Approved under the Land Registry Act
 this 31st day of MAY, 1976

[Signature]
 Approving Officer, City of Prince George

This plan lies within the Fraser-Fort George
 Regional District.

Sworn before me this 2nd
 day of JUNE, 1976

B.C.L.S.

A Commissioner for taking Affidavits
 for British Columbia.

W D USHER & ASSOCIATES
 LAND SURVEYORS
 PRINCE GEORGE — B.C.