

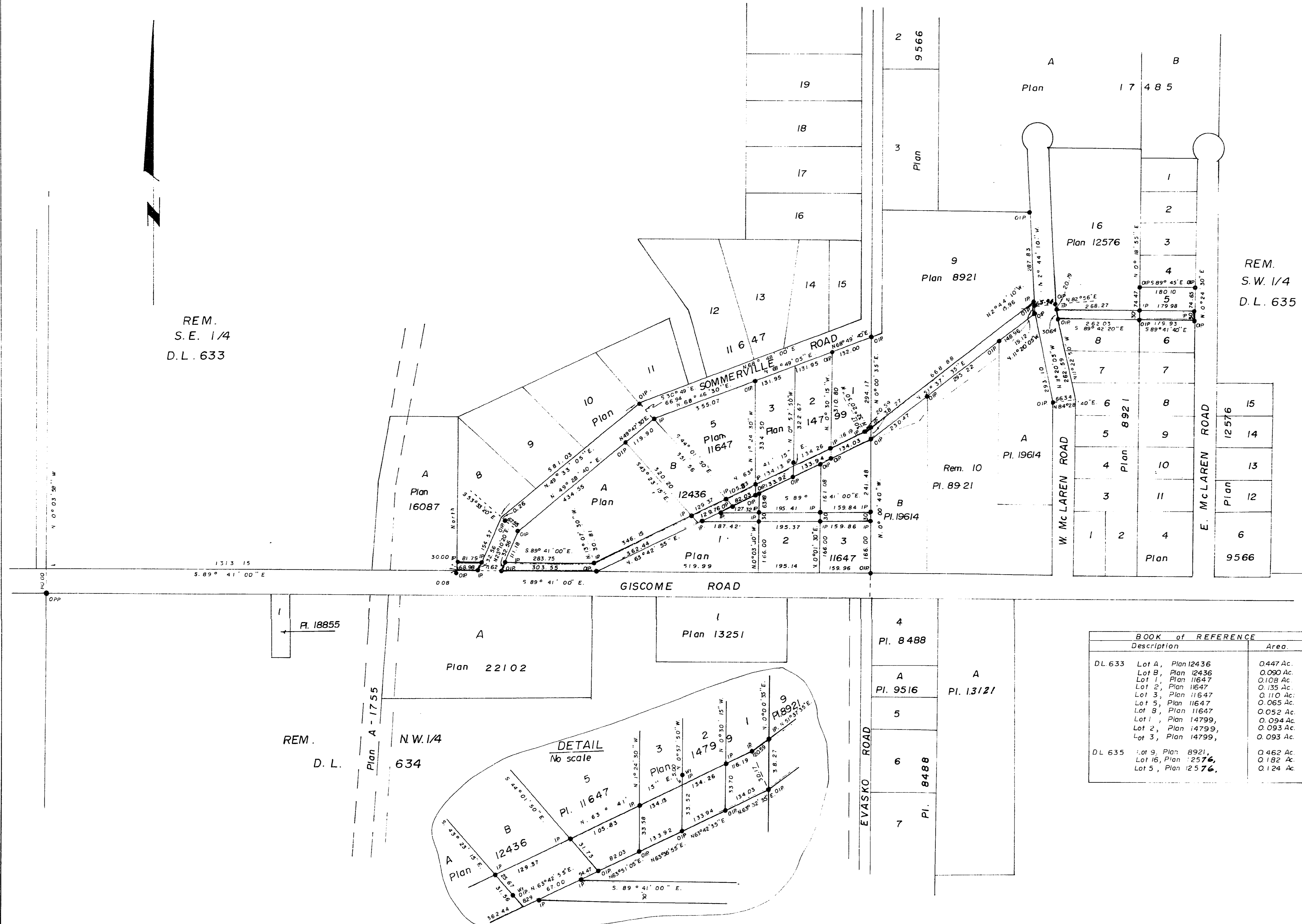
A-26

REM.
S.E. 1/4
D.L. 633

REM.
S.W. 1/4
D.L. 635

PLAN NO. 22716
Deposited in the Land Registry Office at
Prince George this 2 day of JUNE 1976

"K. T. Schooley"
Registrar



CITY of PRINCE GEORGE, B.C.

PLAN of RIGHT-of-WAY IN
DISTRICT LOTS 633 and 635,
CARIBOO DISTRICT.

Scale: 1" = 200'

Bearings are astronomic derived from
Plan 22264
●IP Standard Iron Post
●PP Standard Pipe Post
O Denotes "old"

I, V. Bartel, of the City of Prince George,
British Columbia Land Surveyors make oath and
say that I was present at and did personally
superintend the survey represented by this plan,
and that the survey and plan are correct.
The said survey was completed on the
13 day of May 1976.

V. Bartel
V. Bartel, B.C.L.S.

Sworn before me at Prince George, B.C.
this 17 day of May 1976.

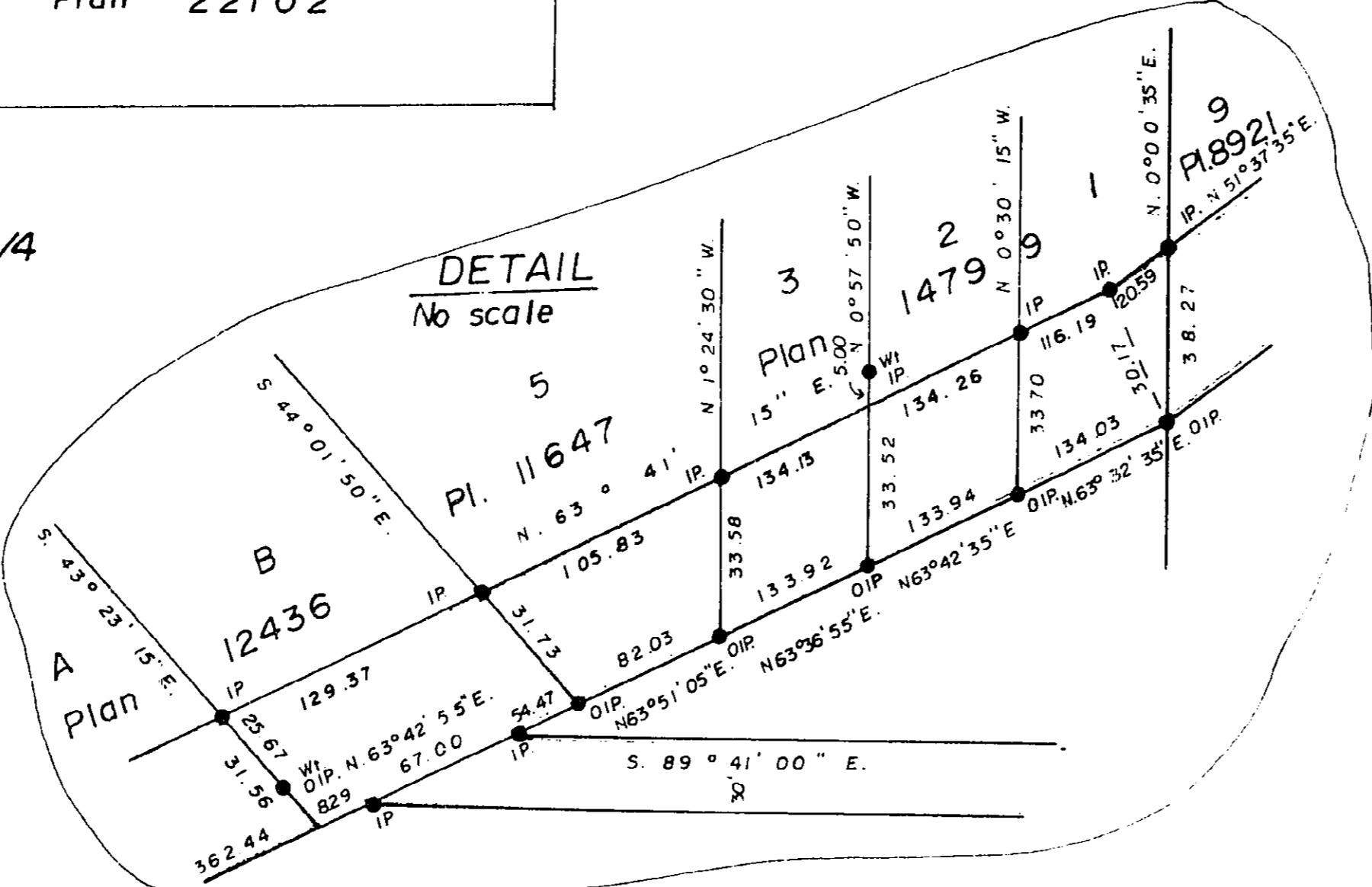
A Commissioner for taking affidavits for
British Columbia.

Approved under the Land Registry Act
this ___ day of ___ 1976.

Approving Officer
City of Prince George

This plan lies within the Fraser Fort-
George Regional District.

BOOK of REFERENCE		
Description	Area.	
DL 633 Lot A, Plan 12436	0.447 Ac.	
Lot B, Plan 12436	0.090 Ac.	
Lot 1, Plan 11647	0.108 Ac.	
Lot 2, Plan 11647	0.135 Ac.	
Lot 3, Plan 11647	0.110 Ac.	
Lot 5, Plan 11647	0.065 Ac.	
Lot 8, Plan 11647	0.052 Ac.	
Lot 1, Plan 14799	0.094 Ac.	
Lot 2, Plan 14799	0.093 Ac.	
Lot 3, Plan 14799	0.093 Ac.	
DL 635 Lot 9, Plan 8921	0.462 Ac.	
Lot 16, Plan 12576	0.182 Ac.	
Lot 5, Plan 12576	0.124 Ac.	



McWilliam, Whyte, Gable & Associates,
BC Land Surveyors,
Prince George - Kamloops - Smithers

REF. NO. 76100-8B

D.L. 633 & 635.