

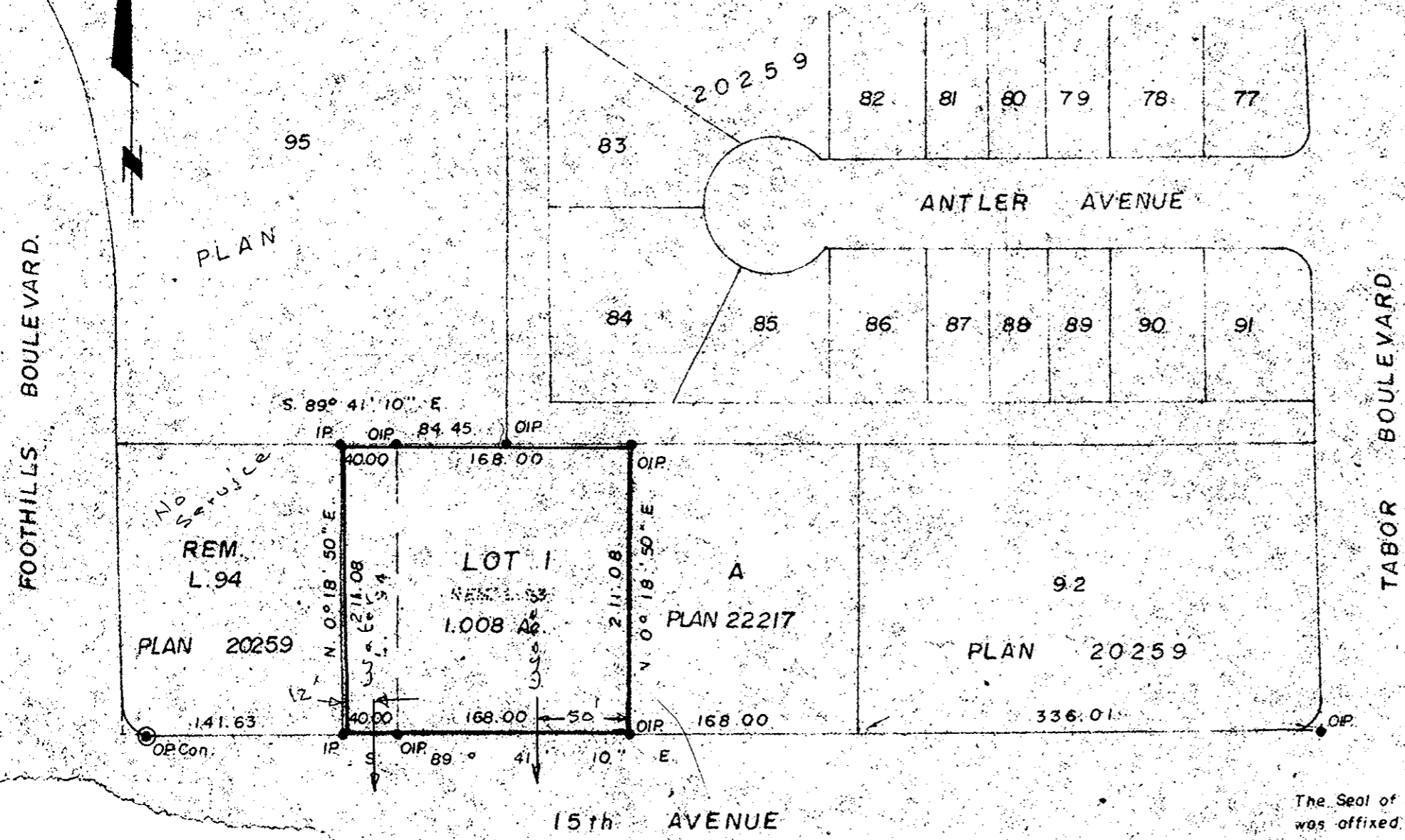
325

PLAN of SUBDIVISION of  
REM. LOT 93 and PART of LOT 94,  
PLAN 20259, D.L. 2507, CARIBOO DISTRICT.

SCALE: 1" = 100'

PLAN NO. ~~22708~~  
DEPOSITED IN THE LAND REGISTRY OFFICE AT  
PRINCE GEORGE THIS 19 DAY OF May 1976

*J. J. Schorley*  
REGISTRAR



Bearings are astronomic derived from  
Plan 20259.  
● IP --- Standard Iron Post.  
⊙ PCon --- Standard Post In Concrete.  
O --- Denotes "old"

I, V. Bartell of the City of Prince George,  
British Columbia Land Surveyor make oath  
and say that I was present at and did  
personally superintend the survey represented  
by this plan and that the survey and plan  
are correct. The said survey was completed  
on the 24 day of May 1976.

*V. Bartell*  
V. Bartell, B.C.L.S.

Sworn before me at Prince George  
this 2 day of May 1976.

*J. Wilson*  
A Commissioner for taking affidavits  
for British Columbia.

The Seal of the City of Prince George  
was affixed hereto in the presence of:

Mayor *H. Moffat*

City Clerk *[Signature]*

This  
Ge

Approved \_\_\_\_\_

White, Gault & Associates,  
Surveyors

REG NO 76100-9

D.L. 2507