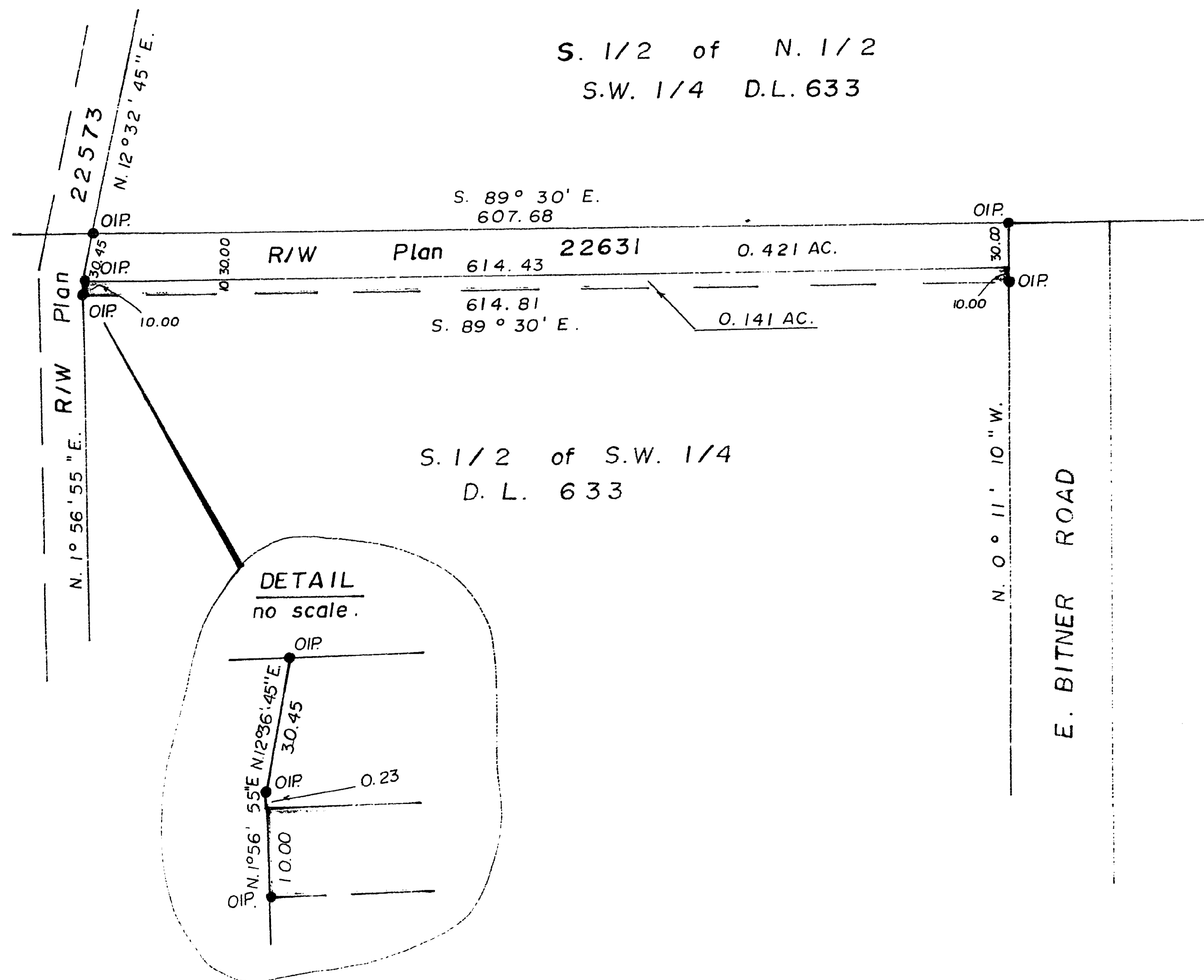
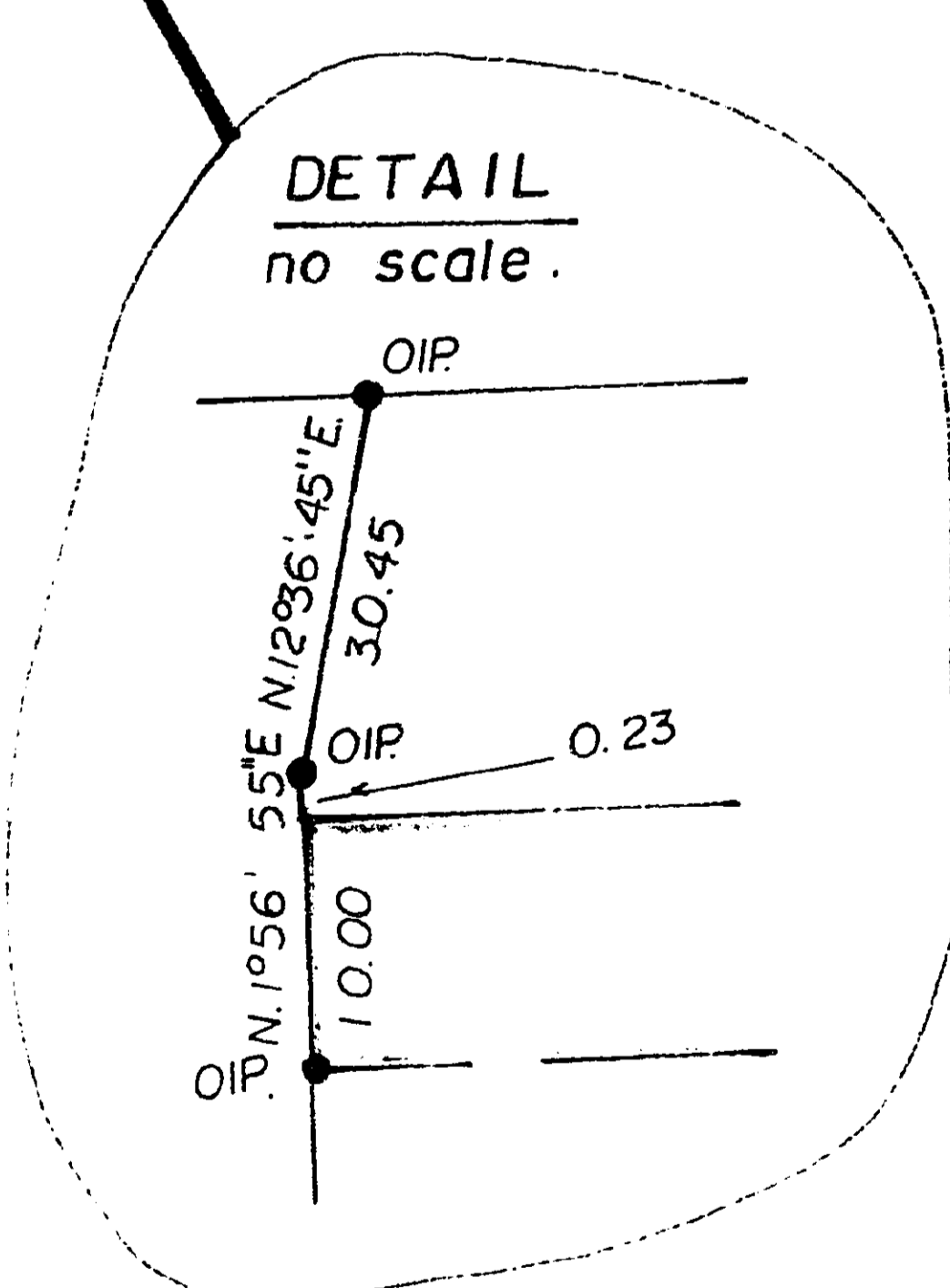


A-26



S. 1/2 of N. 1/2
S.W. 1/4 D.L. 633

S. 1/2 of S.W. 1/4
D. L. 633



BOOK of REFERENCE	
(for released area shown in green)	
S.1/2 of S.W.1/4 D.L. 633	0.141 Ac.

22690

PLAN NO. _____
Deposited in the Land Registry Office at
Prince George this 14 day of May 1976

"E.T. Schooley"
Registrar *per: ca*

CITY of PRINCE GEORGE, B.C.

PLAN TO ALTER RIGHT-of-WAY
PLAN 22631, SHOWING RIGHT-of-WAY TO BE
RELEASED OUTLINED IN GREEN.
THROUGH THE S.1/2 of the S.W. 1/4 D.L. 633,
CARIBOO DISTRICT.
SCALE: 1" = 100'

Bearings are astronomic derived from
Plan 22631.

- IP. ... Standard Iron Post.
- ... Denotes "old"

I, V. Bartell, of the City of Prince George,
British Columbia Land Surveyor make oath
and say that I was present at and did
personally superintend the survey represented
by this plan and that the survey and
plan are correct. The said survey was
completed on the 10 day of May 1976.

V. Bartell
V. Bartell, B.C.L.S.

Approved under the Land Registry Act
this ___ day of _____ 1976.

Approving Officer
City of Prince George.

Sworn before me at Prince George,
this 12 day of May 1976.

D. Wilson
A Commissioner for taking affidavits
for British Columbia.

This plan lies within the Fraser
Fort - George Regional District.

Mc William, Whyte, Goble, & Associates,
B.C. Land Surveyors,
Prince George - Kamloops - Smithers.

REF. NO. 76100-4-3R

D.L. 633