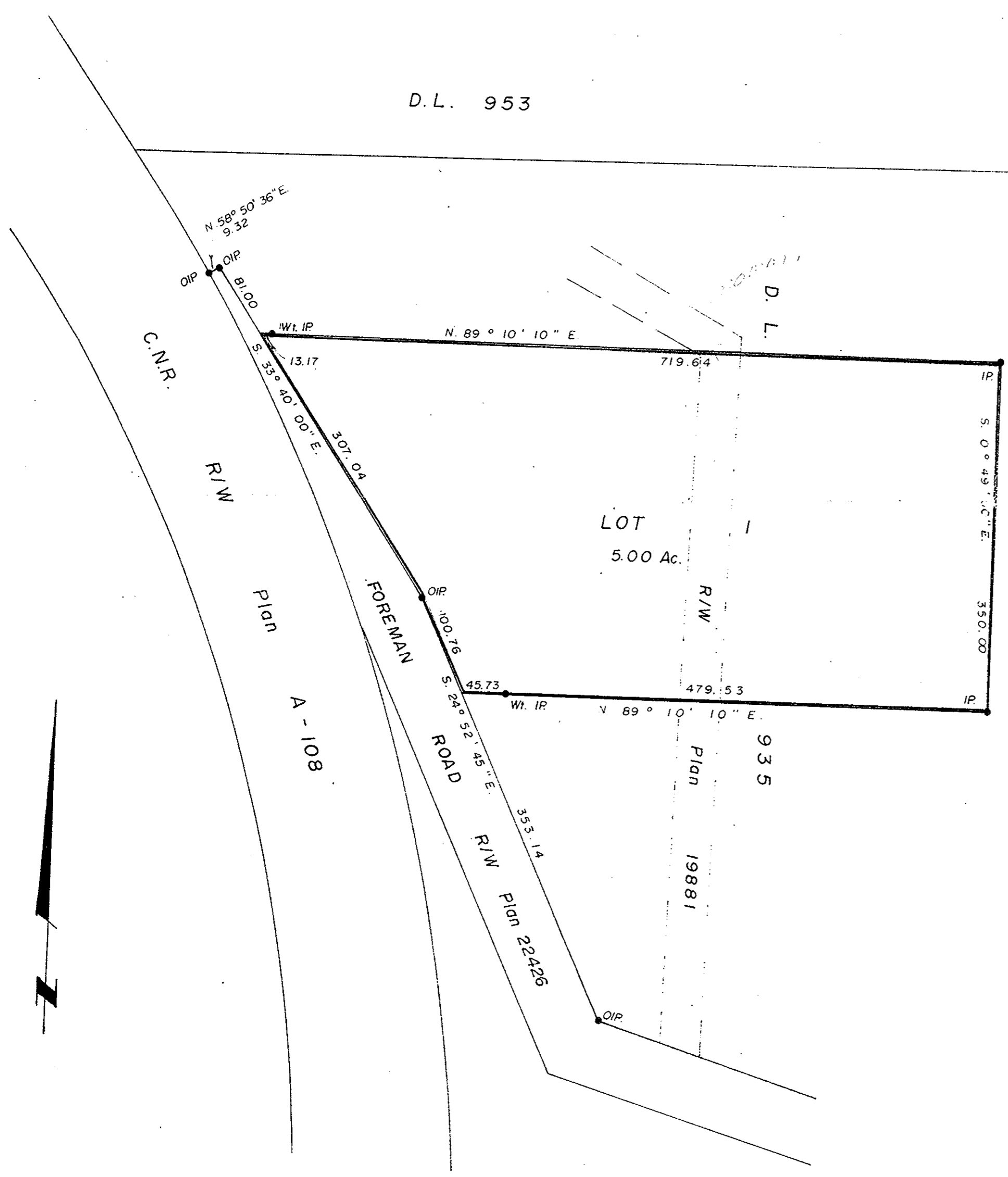


PLAN of SUBDIVISION of  
PART of D.L. 935,  
CARIBOO DISTRICT.  
Scale: 1" = 100'

PLAN No 22684  
Deposited in the Land Registry Office at  
Prince George on the 7 day of May 1976.

*G. I. Schooley*  
Registrar

D.L. 953



Bearings are astronomic and are derived from  
Road R/W Plan 22426.

- P.con. .... Standard Concrete Post.
- P.Rock ..... Standard Rock Post.
- P.P ..... Standard Pipe Post.
- I.P ..... Standard Iron Post.
- P ..... Wooden Post.
- L.P ..... Lead Plug.
- ..... Denoting "Old"
- WT. .... Denoting "Witness"
- CIP ..... Capped Iron Post

I, D. Keown ..... of the City of Prince George  
British Columbia Land Surveyor, make oath and  
say that I was present at and did personally  
superintend the survey represented by this  
plan and that the survey and plan are correct.  
The said survey was completed on  
the 20 day of April 1976.

*D. Keown*

Sworn before me at Prince George, B.C.  
this 14 day of May 1976.

Approved under the Land Registry Act  
on the 6<sup>th</sup> day of MAY 1976.

*C. D. ...*  
Approving Officer

A Commissioner for taking affidavits  
for British Columbia.

Owner *W. Kruger*

Witness *D. Stelmach*

This plan lies within the EcoSec  
Fort. George Regional District.

McWilliam-Whyte-Goble & Associates  
B.C. LAND SURVEYORS  
PRINCE GEORGE | SMITHERS | KAMLOOPS  
REF N: 76032