

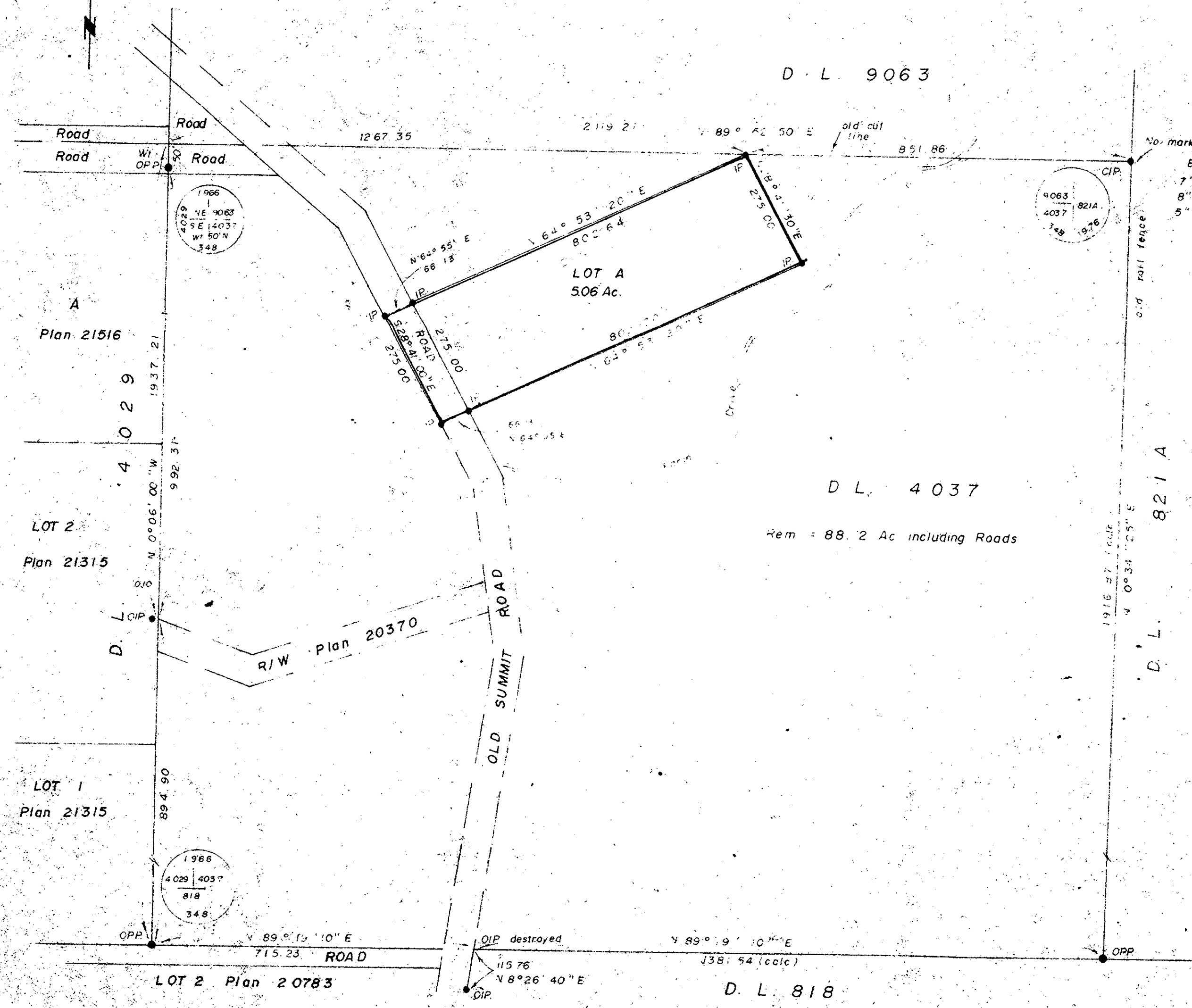
Plotted (KU)
PLAN No 22670

Deposited in the Land Registry Office at
Prince George on the 6 day of May 1976

E. J. Schooley
Registrar

PLAN of SUBDIVISION
of PART of D.L. 4037,
CARIBOO DISTRICT.

Scale: 1" = 200'



No. mark found

BTs	
7" Pine	21.4 N 22° W
8" Pine	24.1 N 57° E
5" Birch	17.4 S 40° E

Bearings are astronomic and are derived from
Plan 2315

- P.con. Standard Concrete Post
- P.Rock Standard Rock Post
- PP Standard Pipe Post
- IP Standard Iron Post
- P Wooden Post
- LP Lead Plug
- Denoting "Old"
- WT Denoting "Witness"
- CIP Capped Iron Post

I, J. Bartell ... of the City of Prince George,
British Columbia Land Surveyor, make oath and
say that I was present at and did personally
superintend the survey represented by this
plan and that the survey and plan are correct.
The said survey was completed on
the 22 day of April 1976.

J. Bartell

Sworn before me at Prince George, B.C.
this 26 day of April 1976.

Approved under the Land Registry Act
on the 26th day of APRIL 1976

C. E. Plot
Approving Officer

A Commissioner for taking affidavits
for British Columbia

Owner *B. Hardy*

Witness *Veronica Sutherland*

This plan lies within the Fraser
Fort George Regional District.

McWilliam-Whyte-Gable & Associates
B.C. LAND SURVEYORS
PRINCE GEORGE | SMITHERS | KAMLOOPS
REF No 75053