

A-26

EXPLANATORY PLAN OF EASEMENT
IN LOT B, PLAN 22580, D.L. 751,
CARIBOO DISTRICT.

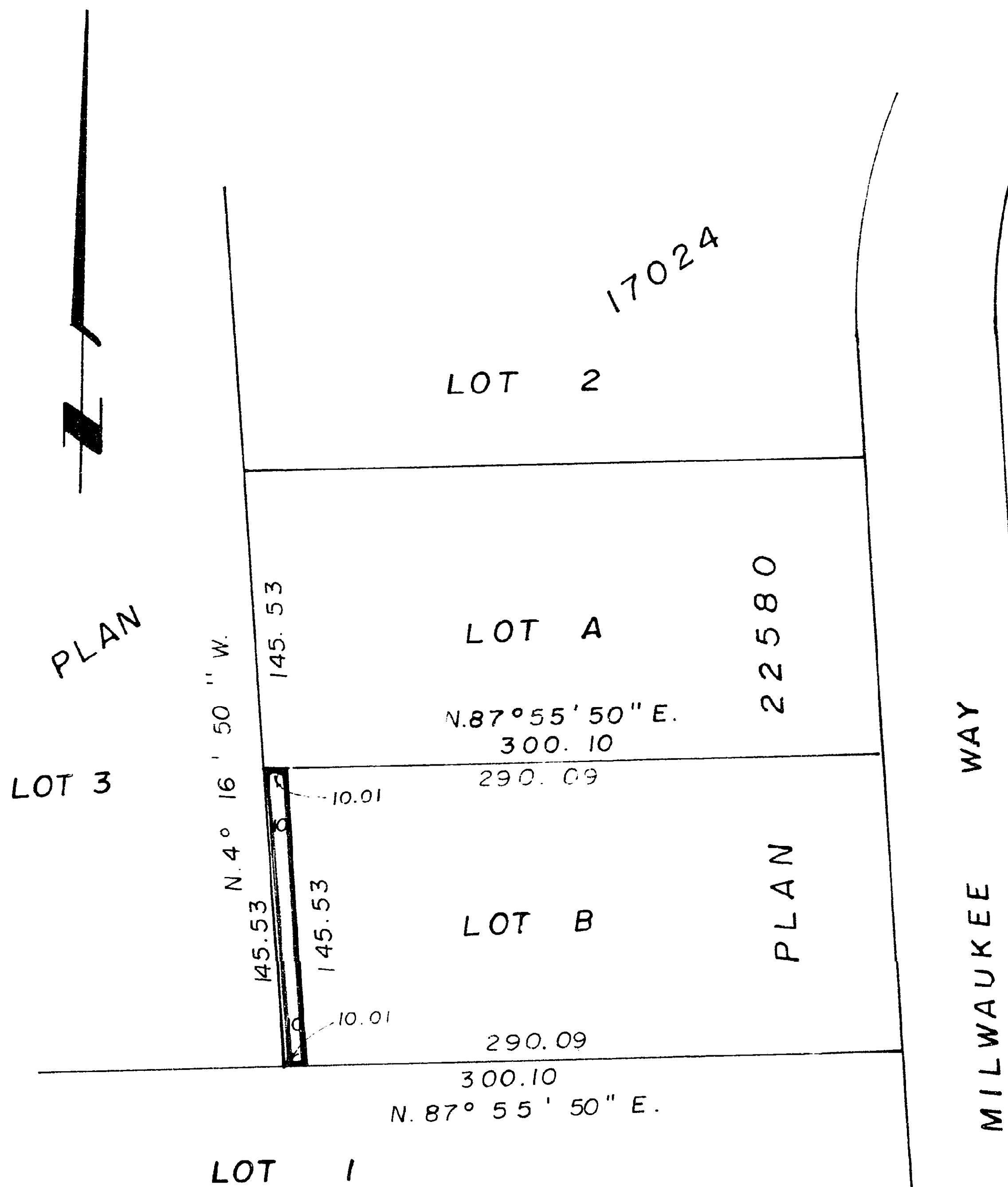
SCALE: 1" = 100'

22661

PLAN NO. _____

Deposited in the Land Registry Office at
Prince George this 27 day of April 1976

"F.T. Schooley"
Registrar per: *ck*



CERTIFIED CORRECT
according to Land Registry Office
Records this 27 day of April 1976

D. Keown
D. Keown, B.C.L.S.

This plan lies within the Fraser
Fort George Regional District.

Book of Reference	
Description	Area
Lot B, Pl. 22580	0.033 Ac.

PLAN 21003
LOT 3

McWilliam, Whyte, Goble, & Associates,
B.C. Land Surveyors,
Prince George - Kamloops - Smithers.

REF. NO. 76037