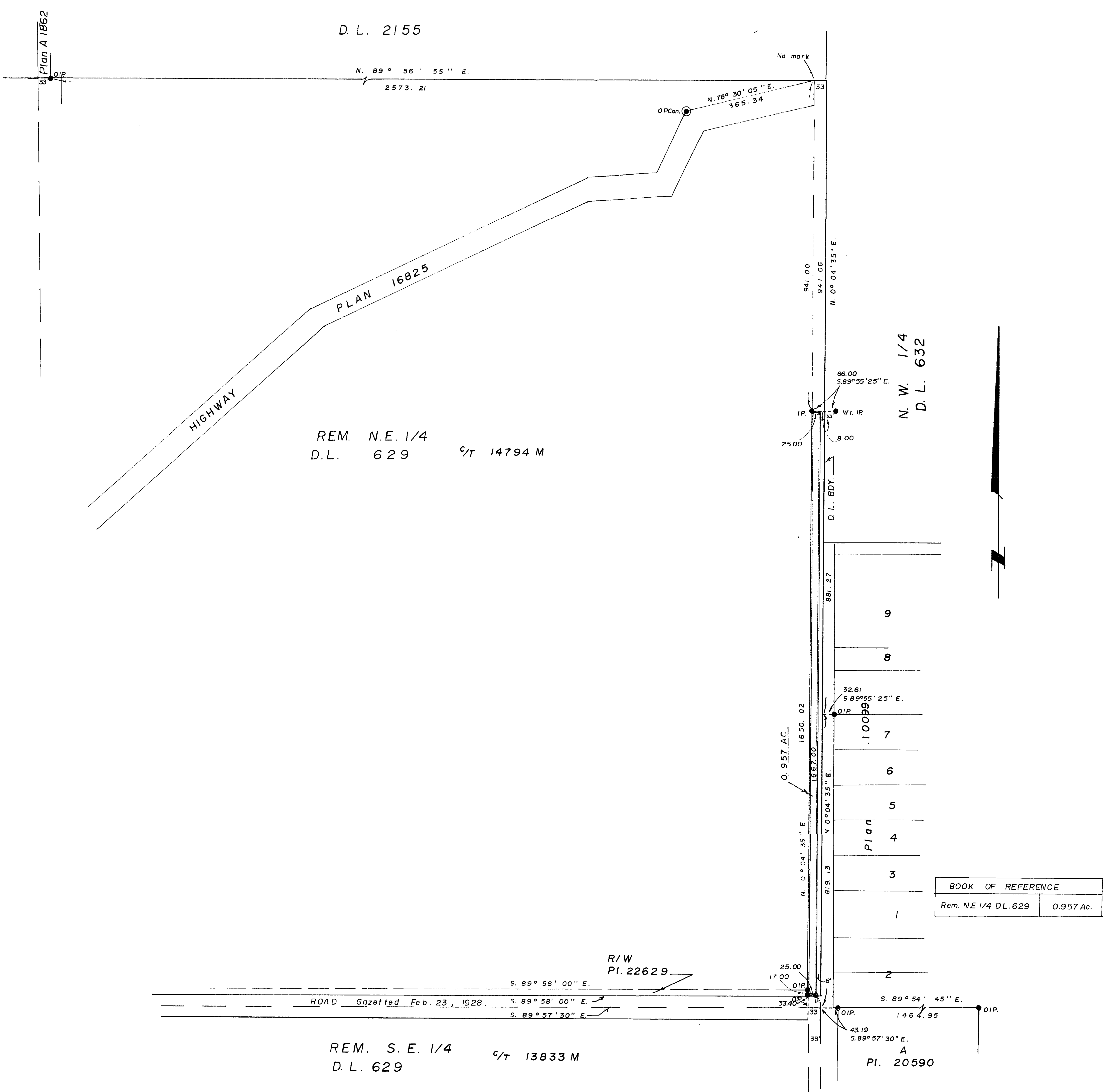


A-26



D.L. 2155

REM. N.E. 1/4
D.L. 629 C/T 14794 M

REM. S.E. 1/4
D.L. 629 C/T 13833 M

PLAN NO. **22659**
Deposited in the Land Registry Office at
Prince George this 22 day of April 1976

"E. T. Schooley"
Registrar per: *ex*

CITY of PRINCE GEORGE, B.C.

PLAN of RIGHT-of-WAY
IN REM. N.E. 1/4 D.L. 629,
CARIBOO DISTRICT.

SCALE: 1" = 200'

Bearings are astronomic derived from
Plan 20590.

- IP Standard Iron Post.
- ⊙ PCon. Standard Post in Concrete
- Wt. Denotes "witness."
- O Denotes "old"

I, V. Bartell, of the City of Prince George,
British Columbia Land Surveyor, make oath and say
that I was present at and did personally superintend
the survey represented by this plan and that the
survey and plan are correct. The said survey was
completed on the 12 day of April 1976.

V. Bartell
V. Bartell, B.C.L.S.

Sworn before me at Prince George,
this 22 day of April 1976.

G. Wilson
A Commissioner for taking affidavits
for British Columbia.

Approved under the Land Registry Act
this ___ day of ___ 197__.

Approving Officer
City of Prince George

This plan lies within the Fraser Fort-
George Regional District.

McWilliam, Whyte, Goble, & Associates,
B.C. Land Surveyors
Prince George - Kamloops - Smithers

REF. NO. 76100-4-4