

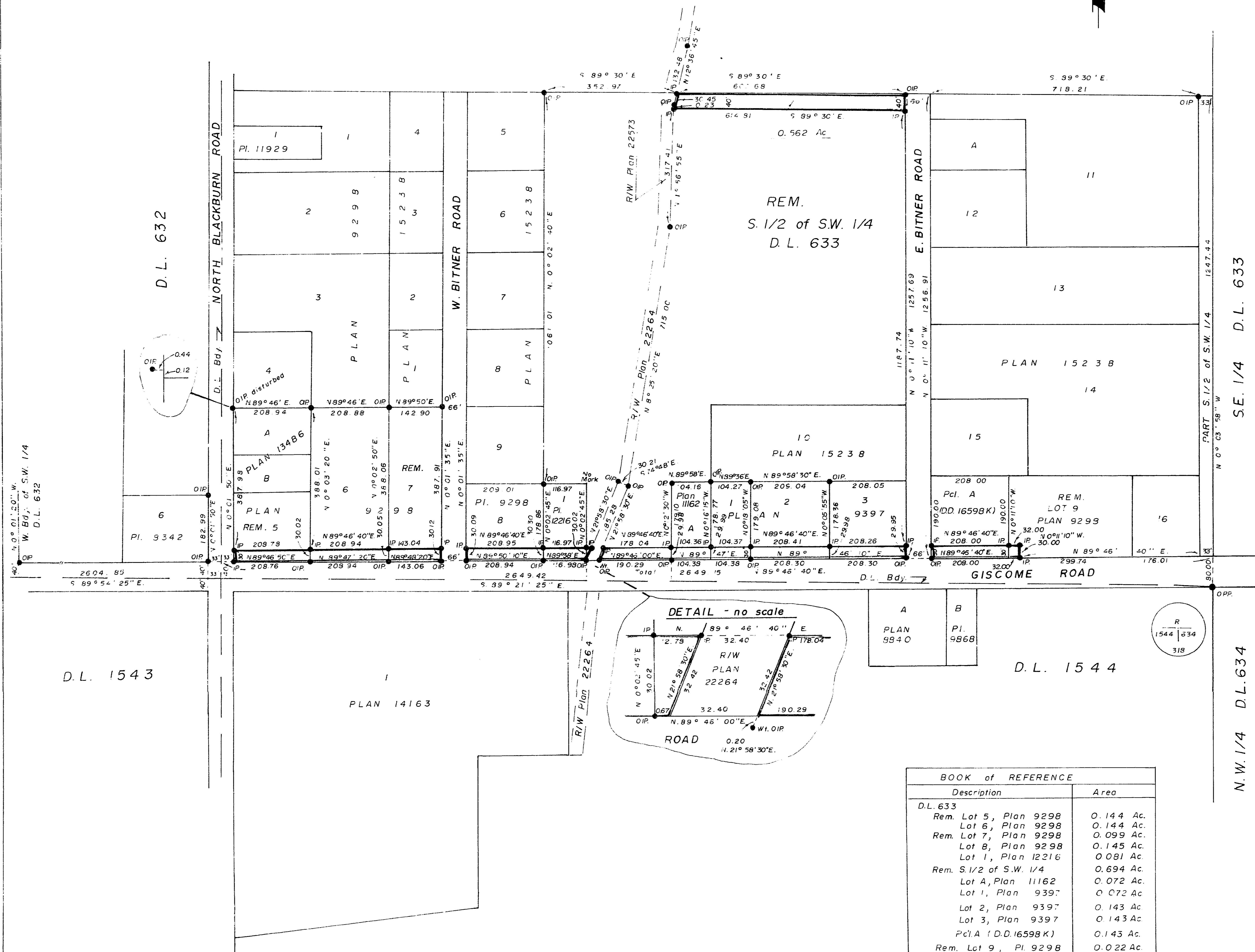
A-26

22631
PLAN No.

Deposited in the Land Registry Office at
Prince George this 9. day of April 1976.

"E.T. Schooley"
Registrar per: cr

S. 1/2 of N. 1/2
S.W. 1/4 D.L. 633



S.E. 1/4 D.L. 633
PART S. 1/2 of S.W. 1/4
N 0° 03' 58" W
N.W. 1/4 D.L. 634

CITY OF PRINCE GEORGE, B.C.
PLAN of RIGHT-of-WAY
IN DISTRICT LOT 633,
CARIBOO DISTRICT.
SCALE: 1" = 200'

- Bearings are astronomic derived from
Plan 22264.
- IP --- Standard Iron Post.
 - PP --- Standard Pipe Post.
 - --- Denotes "old"
 - Wt. --- Denotes "witness"

I, Bartell, of the City of Prince George,
British Columbia Land Surveyor make oath and
say that I was present at and did personally
superintend the survey represented by this
plan and that the survey and plan are correct.
The said survey was completed on
the 2. day of April 1976.

V. Bartell
V. Bartell, B.C.L.S.

Sworn before me at Prince George, B.C.,
this 5. day of April 1976.

J. Wilson
A Commissioner for taking affidavits
for British Columbia.

Approved under the Land Registry Act
this ____ day of _____ 1976.

Approving Officer
City of Prince George

This plan lies within the Fraser Fort-
George Regional District.

McWilliam, Whyte, Goble, & Associates,
B.C. Land Surveyors,
Prince George - Kamloops - Smithers

REF. NO. 76100-4-3

BOOK of REFERENCE	
Description	Area
D.L. 633	
Rem. Lot 5, Plan 9298	0.144 Ac.
Lot 6, Plan 9298	0.144 Ac.
Rem. Lot 7, Plan 9298	0.099 Ac.
Lot 8, Plan 9298	0.145 Ac.
Lot 1, Plan 12216	0.081 Ac.
Rem. S. 1/2 of S.W. 1/4	0.694 Ac.
Lot A, Plan 11162	0.072 Ac.
Lot 1, Plan 9397	0.072 Ac.
Lot 2, Plan 9397	0.143 Ac.
Lot 3, Plan 9397	0.143 Ac.
Pct. A (D.D. 16598 K)	0.143 Ac.
Rem. Lot 9, Pl. 9298	0.022 Ac.

D.L. 1543

D.L. 1544