

A-26

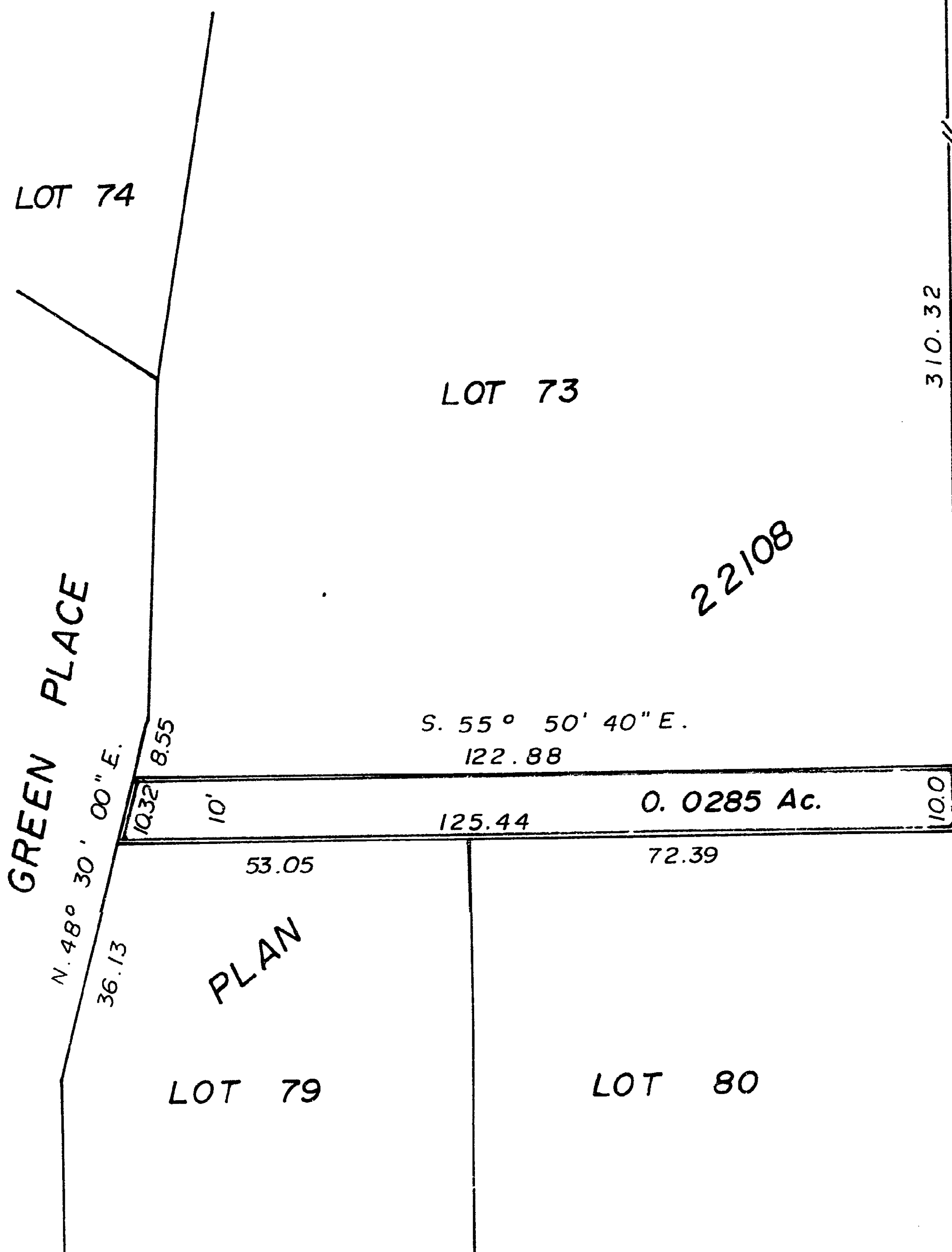
EXPLANATORY PLAN of
RIGHT-of-WAY in LOT 73, PLAN 22108,
D. L. 2507 CARIBOO DISTRICT.

22604

PLAN No. _____
Deposited in the Land Registry Office at
Prince George this 30 day of March 1976

Scale: 1" = 30'

"E. T. Schooley"
Registrar per: ER



TABOR BOULEVARD
N. 34° 09' 30" E.
310.32

CERTIFIED CORRECT
according to Land Registry Office
Records this 27th day of January, 1976.

Victor Bartell
V. Bartell, B.C.L.S.

This plan lies within the Fraser
Fort George Regional District.

BOOK OF REFERENCE	
Description	Area
LOT 73, Plan 22108	0.0285 Ac.

McWilliam, Whyte, Goble, & Associates,
B.C. Land Surveyors,
Prince George — Smithers — Kamloops

REF. NO. 76100 - 1

D. L. 2507. 805-S7-A144