

K24

PLAN OF SUBDIVISION OF
LOTS 4 TO 7 INCLUSIVE, BLOCK 156, PLAN 1268
DISTRICT LOT 343
CARIBOO DISTRICT - BRITISH COLUMBIA

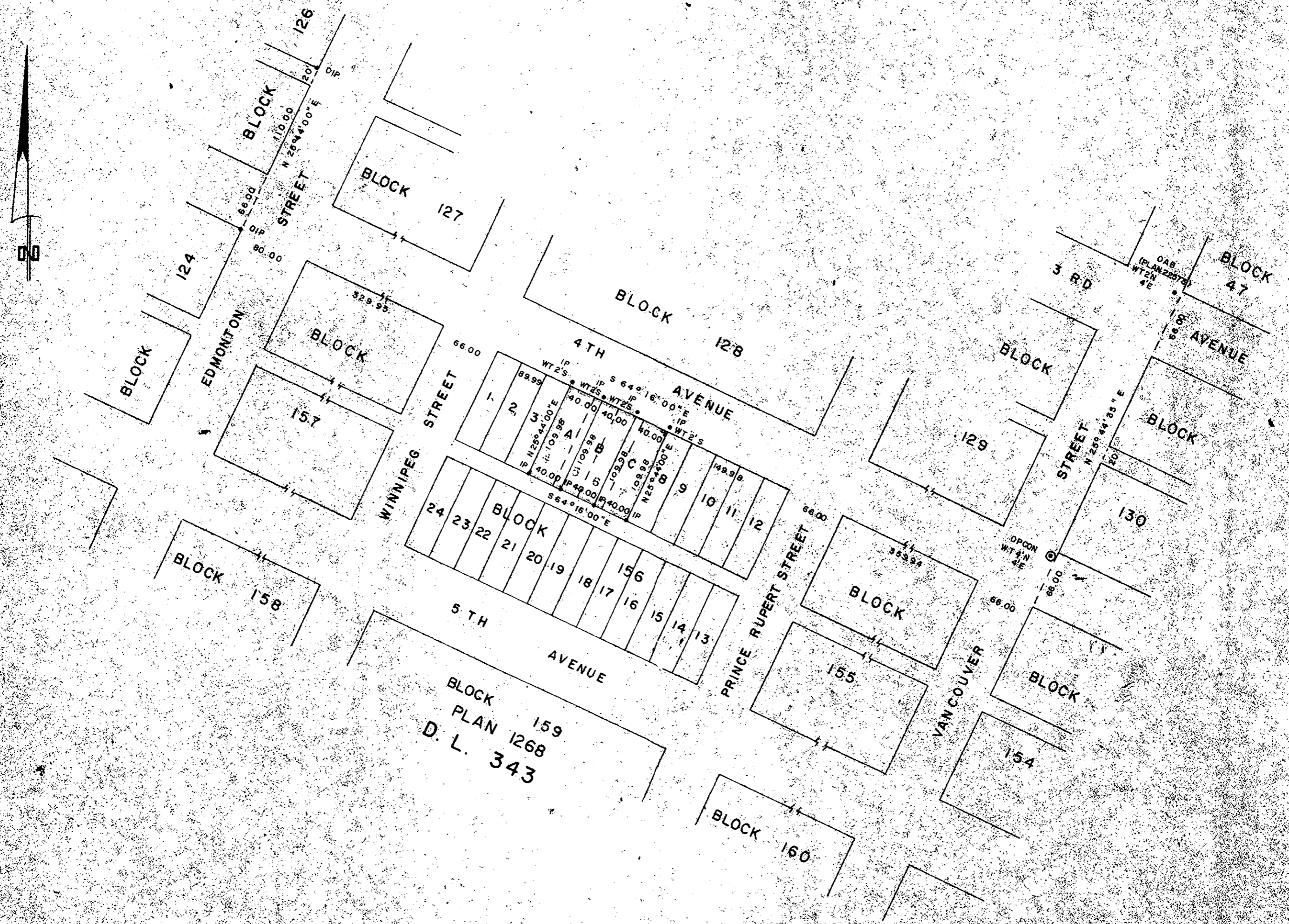
PLAN N^o 22579
Deposited in the Land Registry
Office at Prince George, B.C. this
23 day of March, 1976

SCALE: 1" = 100'

NOTE: Bearings are astronomic, derived from the east
boundary of Vancouver Street, as shown on Plan
22073.

L. J. Scholey
Registrar

- LEGEND
- ⊙ OPCON denotes an old concrete monument found.
 - OAB denotes an old aluminum bolt found.
 - OIP denotes an old iron pin found.
 - IP denotes an iron pin set.
 - WT denotes witness.



I, DONALD A. DUFFY of the City of Prince George,
a British Columbia Land Surveyor, make oath and say
that I was present at and did personally superintend
the survey represented by this plan and that the survey
and plan are correct. The said survey was completed
on the 16 day of DEC, 1975

[Signature]
B.C.L.S.

Sworn before me this 18
day of DEC, 1975

[Signature]
A Commissioner for taking Affidavits
for British Columbia.

F. J. SHEARER LIMITED

S. J. HENRY ENTERPRISES LTD.

[Signature]
PRESIDENT

Approved under the Land Registry Act
this 29th day of DEC, 1975

[Signature]
Approving Officer, City of Prince George

This plan lies within the Fraser-Fort George
Regional District.

W. D. FISHER & ASSOCIATES
LAND SURVEYORS
PRINCE GEORGE, B.C.
10-24 7-208