

PLAN OF SUBDIVISION OF
 LOTS 19, 20 & B, BLOCK 81, PLAN 1268
 DISTRICT LOT 343
 CARIBOO DISTRICT - BRITISH COLUMBIA

SCALE: 1" = 40'

NOTE: Bearings are astronomic, derived from the west boundary of Lots 1 & 2, Plan 12771.

LEGEND: •OIP denotes an old iron pin found.
 •IP denotes an iron pin set.

PLAN No ¹²⁵ 22571

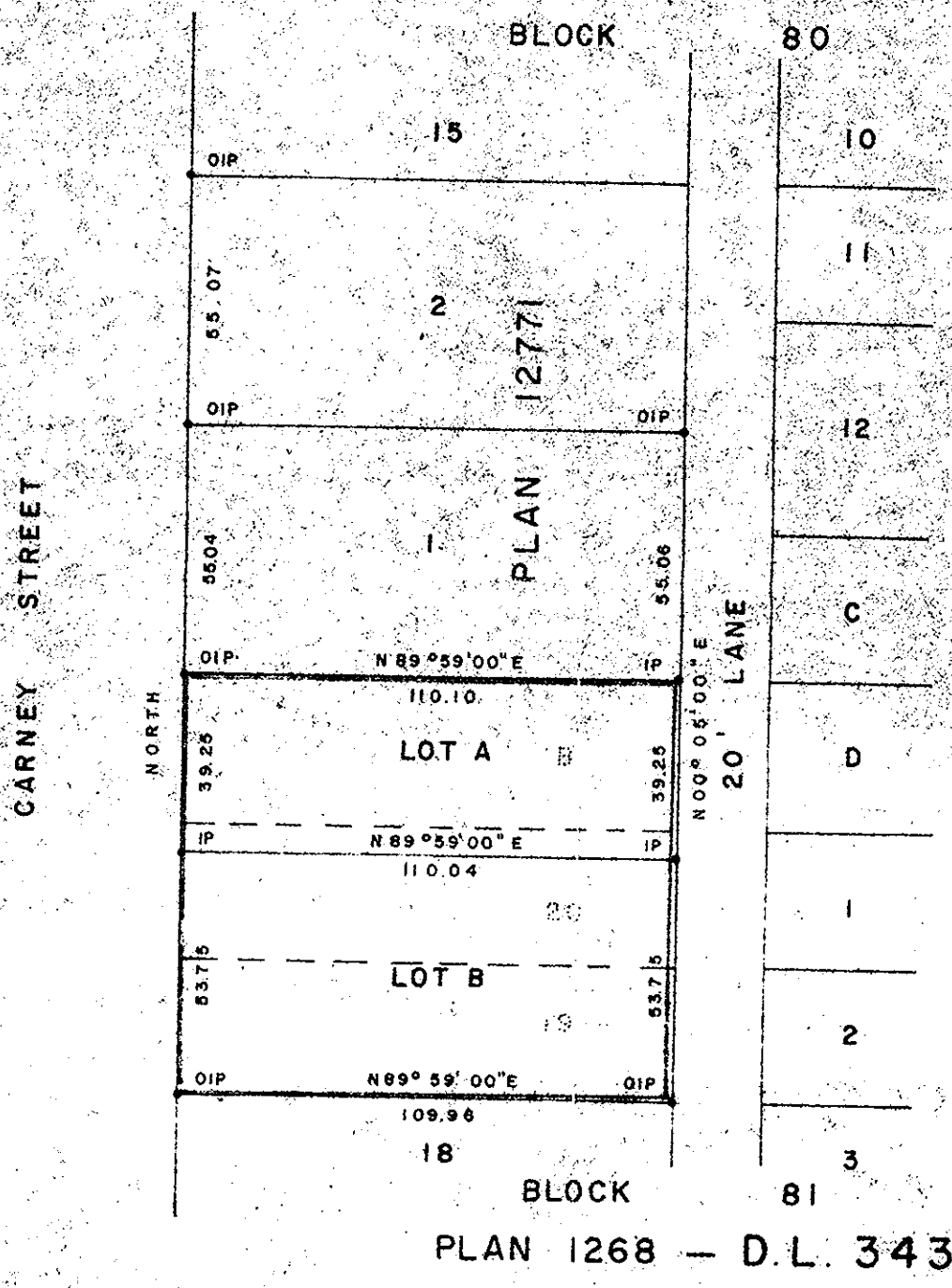
Deposited in the Land Registry Office at Prince George, B.C. this 19 day of March, 1976

"E. J. Scholey"
 Registrar

SUBDIVISION APPROVED BY THE MORTGAGE, CENTRAL MORTGAGE AND HOUSING CORPORATION

David C. Stewart
 SECRETARY TO BOARD OF DIRECTORS

Date FEBRUARY 9, 1976



I, DONALD A. DUFFY, of the City of Prince George, a British Columbia Land Surveyor, make oath and say that I was present at and did personally superintend the survey represented by this plan and that the survey and plan are correct. The said survey was completed on the 14 day of NOV, 1975

[Signature]
 B.C.L.S.

Sworn before me this 12 day of DEC, 1975

A Commissioner for taking Affidavits for British Columbia

Owner *[Signature]*

Witness *[Signature]*

Owner *[Signature]*

Witness *[Signature]*

Approved under the Land Registry Act this 19 day of NOV, 1975

[Signature]
 Approving Officer, City of Prince George
 Reapproved Mar 11, 1976

This plan lies within the Fraser-Port George Regional District

W. D. USHER & ASSOCIATES
 LAND SURVEYORS
 PRINCE GEORGE - B.C.
 18 57 8049 A