

# A-26

EXPLANATORY  
 PLAN OF EASEMENT THROUGH  
 LOT 2, PLAN 21003  
 DISTRICT LOT 751  
 CARIBOO DISTRICT—BRITISH COLUMBIA  
 SCALE: 1" = 20'

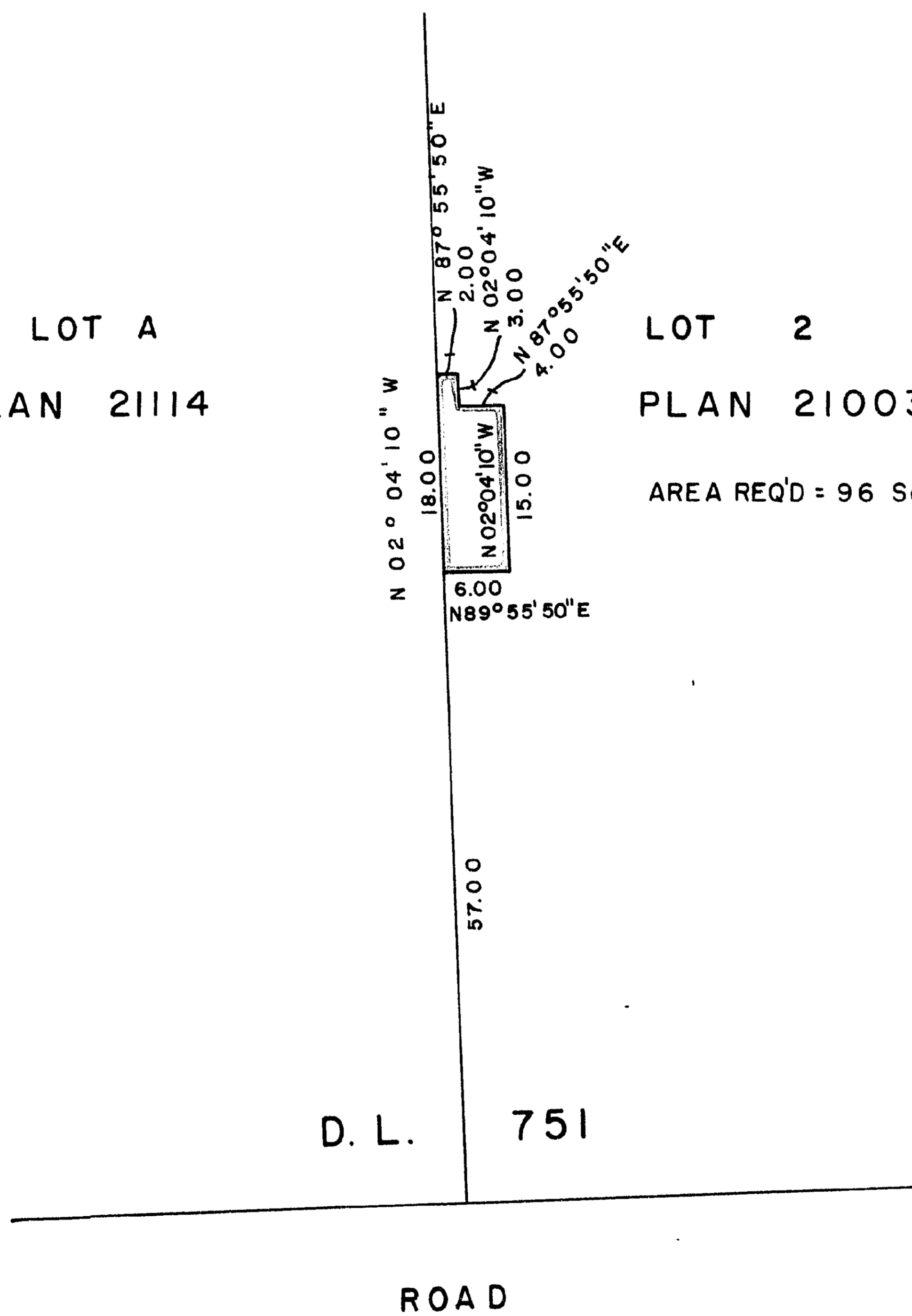
PLAN N<sup>o</sup> **22551**  
 Deposited in the Land Registry  
 Office at Prince George, B.C. this  
4 day of March, 1976  
 "E.T. Schooley"  
 Registrar *per: ea*



LOT A  
 PLAN 21114

LOT 2  
 PLAN 21003

AREA REQ'D = 96 Sq. Ft.



CERTIFIED CORRECT  
 According to measurements shown  
 on Plan 21003.  
 This 18th day of February, 1976.

*[Signature]*  
 D. A. DUFFY, B.C.L.S.

W.D. USHER & ASSOCIATES  
 LAND SURVEYORS  
 PRINCE GEORGE — B. C.