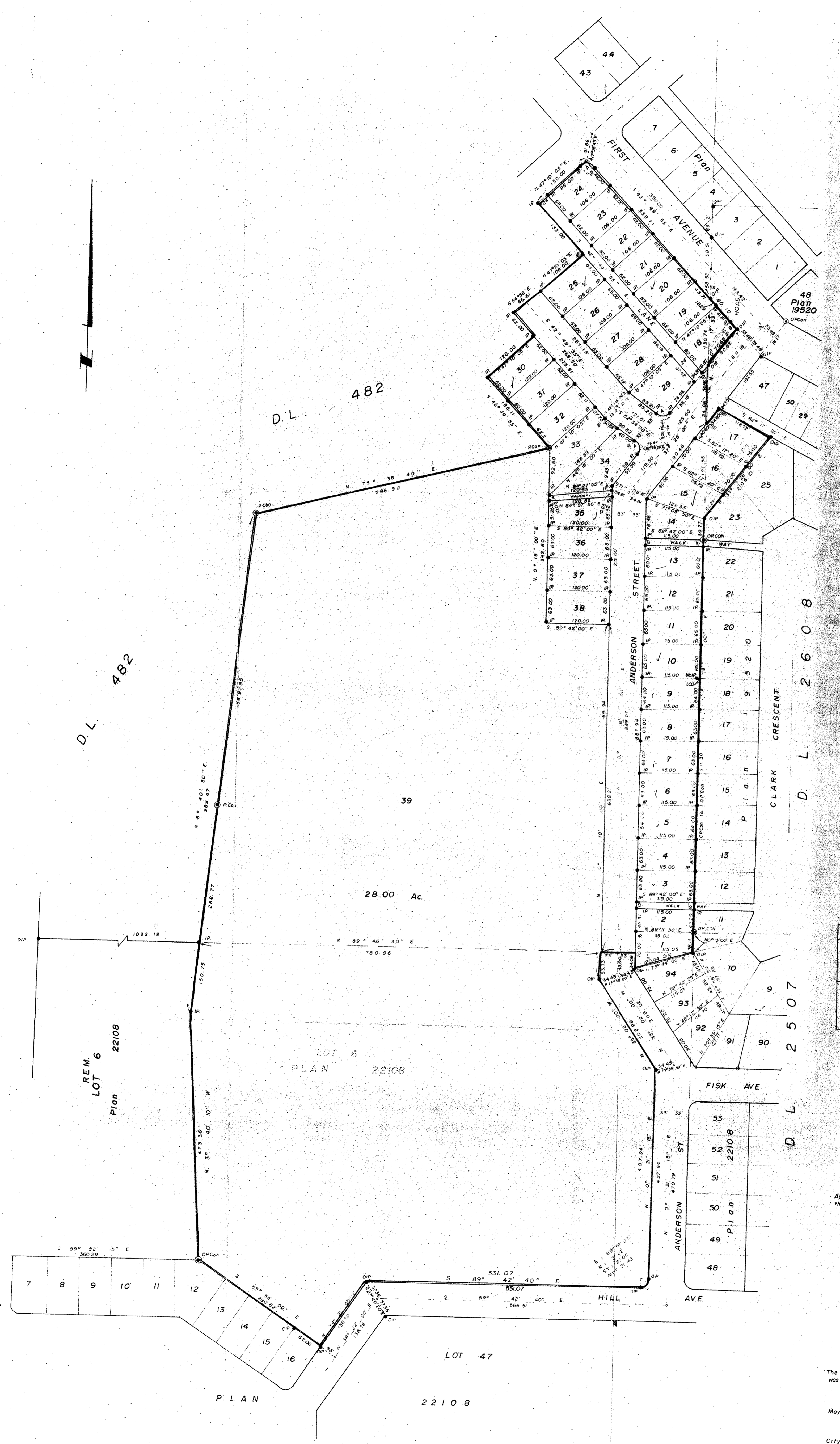


22538

PLAN NO. 22538
DEPOSITED IN THE LAND REGISTRY OFFICE AT
PRINCE GEORGE THIS 15 DAY OF March 1976

"L. A. Schooley"
REGISTRAR



PLAN of SUBDIVISION of
LOT 95 and PART of LOT 6, PLAN 22108, D.L. 482,
LOT 24, and PART of LOT 108, PLAN 19520, D.L. 2608,
and PART of D.L. 482, CARIBOO DISTRICT.

SCALE: 1" = 100'

CURVE DATA	
A	Δ = 90°00'00" R = 20.00 T = 20.00 Arc = 31.42
B	Δ = 80°05'55" R = 23.72 T = 20.00 Arc = 33.23

TOTAL AREA WITHIN RED OUTLINE = 37.03 Ac.

Bearings are astronomic derived from
Plan 22108.

- IP Standard Iron Post
- PP Standard Pipe Post
- PCON Standard Concrete Post
- CIR Capped Iron Post
- O Denotes "old"
- W Denotes "witness"

Approved under the Land Registry Act
this 15 day of JAN. 1976

[Signature]
Approving Officer
City of Prince George

I, D. Keown, of the City of Prince George,
British Columbia Land Surveyor, make oath
and say that I was present at and did personally
superintend the survey represented by this plan and
that the survey and plan are correct.
The survey was completed on the 12 day
of November, 1975.

[Signature]
D. Keown

Sworn before me at Prince George
this 12 day of November 1975

[Signature]
A Commissioner for taking affidavits
for British Columbia.

The Seal of the City of Prince George
was affixed here to in the presence of

Mayor: *[Signature]*
City Clerk: *[Signature]*

This plan lies within the Fraser-Fort-
George Regional District.

McWilliam, Whyte, Goble, & Associates,
B.C. Land Surveyors,
Prince George-Kamloops-Smithers.
REF NO 74100-25 F

D.L. 482, 2608