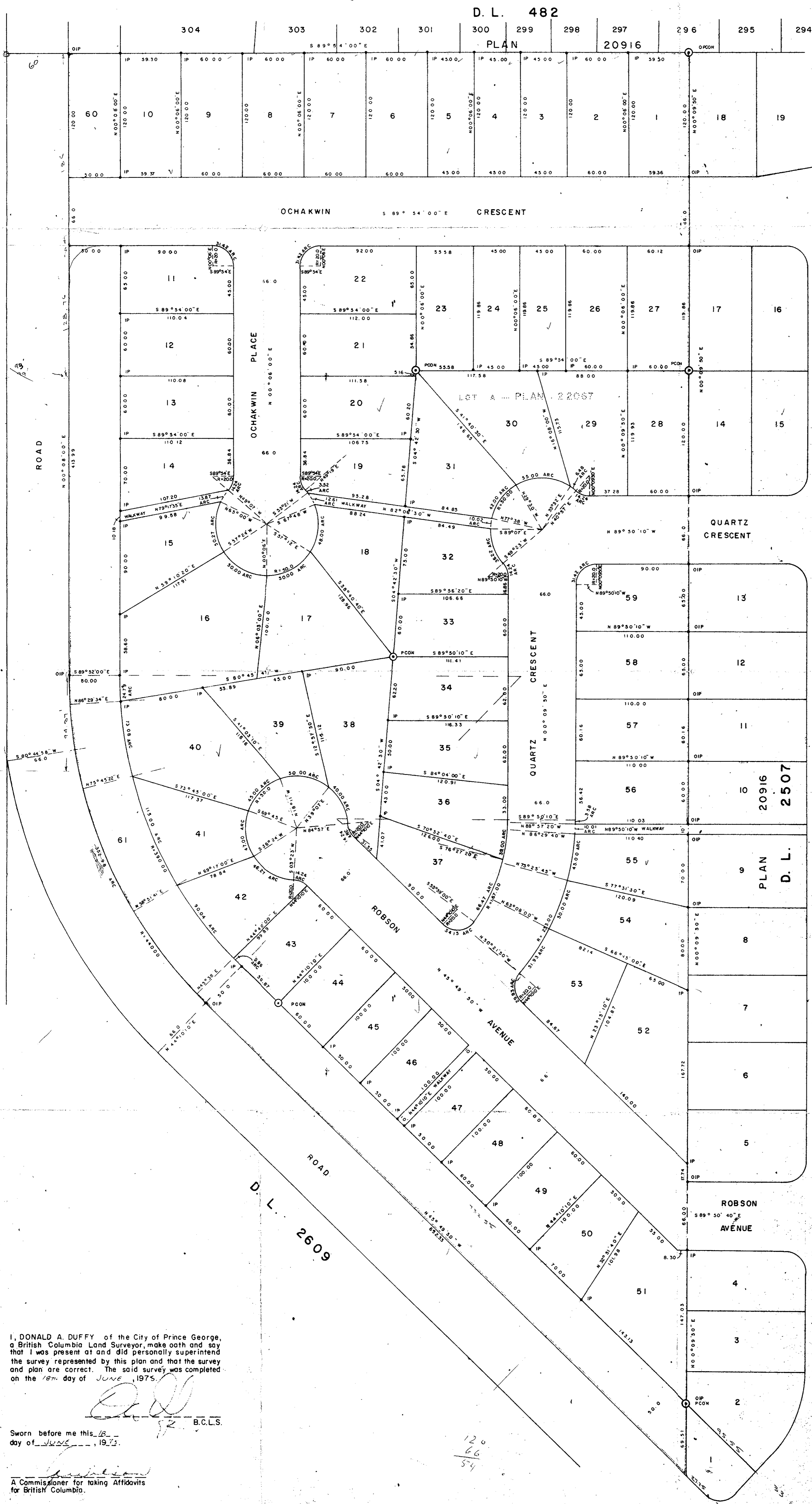


PLAN OF SUBDIVISION OF  
 LOT A, PLAN 22067  
 DISTRICT LOT 2609  
 CARIBOO DISTRICT - BRITISH COLUMBIA

SCALE: 1" = 50'  
 NOTE: Bearings are astronomic, derived from the east boundary of D. L. 2609, as shown on Plan 20916.

LEGEND:  $\odot$  PCON denotes a concrete monument set.  
 $\odot$  OPCON denotes an old concrete monument found.  
 $\bullet$  OIP denotes an old iron pin found.  
 $\bullet$  IP denotes an iron pin set.

PLAN NO. 22535  
 Deposited in the Land Registry Office at Prince George, B.C. this 22 day of February, 1976  
E. T. Schooley  
 Registrar



SUBJECT TO CONDITIONS IMPOSED BY MY ORDER DATED 25<sup>th</sup> June, 1975  
 I allow this subdivision to be made and evidenced in the manner prescribed by Section 80(9), Land Registry Act Chapter 201, R.S.B.C., 1960.  
 Dated at Victoria, B.C. this 25<sup>th</sup> day of June, 1975  
[Signature]  
 Acting SURVEYOR - GENERAL

The order of the Surveyor-General dated 25<sup>th</sup> June, 1975 has been filed in the Land Registry Office as number L4017  
E. T. Schooley  
 REGISTRAR OF TITLES

The conditions of the above mentioned order are accepted  
 Name of subdivider: CARMA DEVELOPERS LTD.  
[Signature]  
 President

CARMA DEVELOPERS LTD.  
[Signature]  
 Approved under the Land Registry Act this 13<sup>th</sup> day of February, 1976  
[Signature]  
 Approving Officer, City of Prince George

I, DONALD A. DUFFY of the City of Prince George, a British Columbia Land Surveyor, make oath and say that I was present at and did personally superintend the survey represented by this plan and that the survey and plan are correct. The said survey was completed on the 18<sup>th</sup> day of June, 1975.

[Signature]  
 B.C.L.S.  
 Sworn before me this 18 day of June, 1975.

A Commissioner for taking Affidavits for British Columbia.