

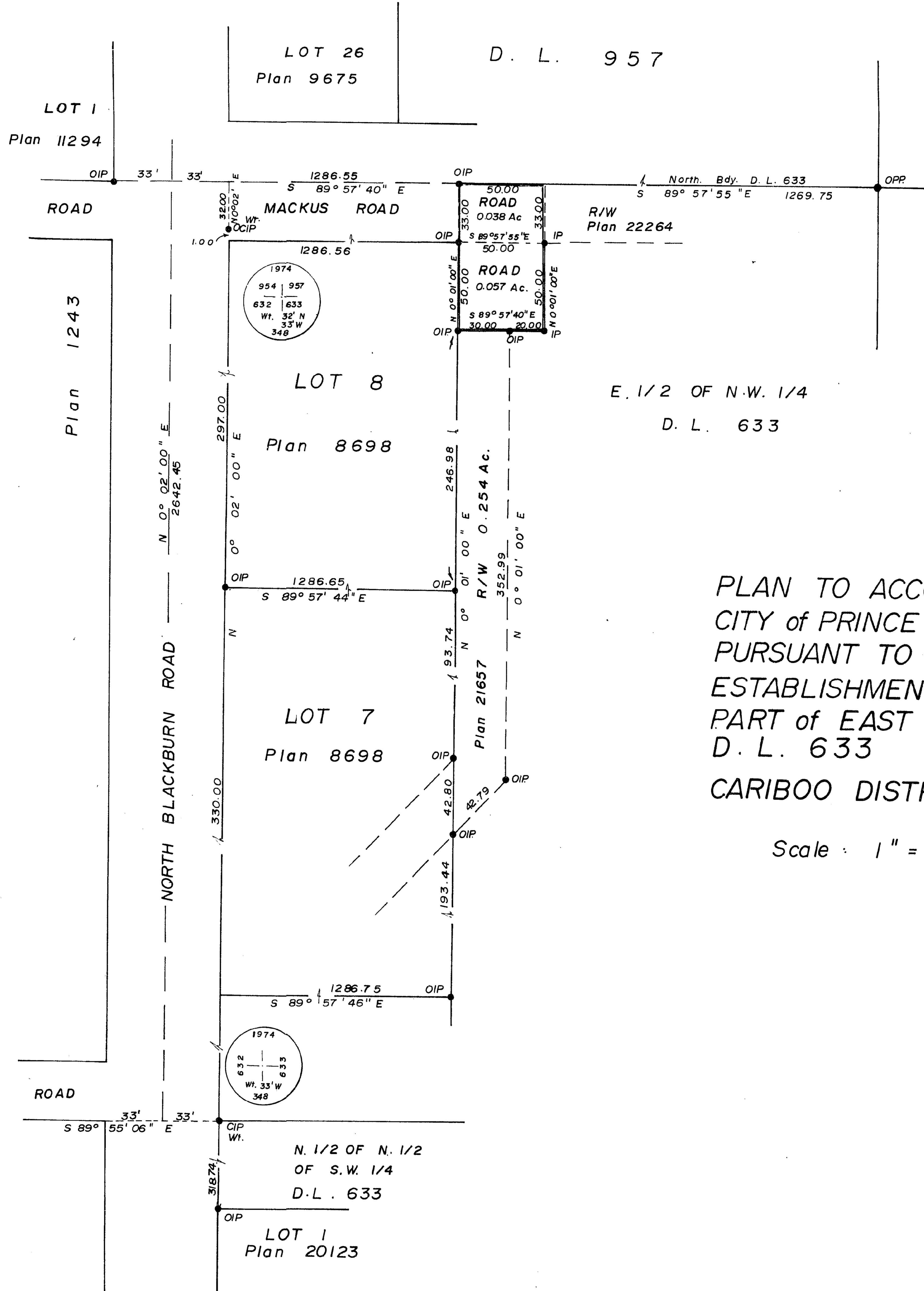
A-26

PLAN NO.: 22491

DEPOSITED IN THE LAND REGISTRY OFFICE AT PRINCE GEORGE THIS 30 DAY OF JANUARY 1976.

E.T. SCHOOLEY REGISTRAR

Per: [Signature]



E. 1/2 OF N.W. 1/4  
D. L. 633

PLAN TO ACCOMPANY BY LAW No. 2811...  
CITY of PRINCE GEORGE,  
PURSUANT TO THE MUNICIPAL ACT  
ESTABLISHMENT AS ROAD  
PART of EAST 1/2 of N.W. 1/4  
D. L. 633  
CARIBOO DISTRICT

Scale : 1" = 50'

I, V. BARTELL OF THE CITY OF PRINCE GEORGE BRITISH COLUMBIA LAND SURVEYOR MAKE OATH AND SAY THAT I WAS PRESENT AT AND DID PERSONALLY SUPERINTEND THE SURVEY REPRESENTED BY THIS PLAN, AND THAT THE SURVEY AND PLAN ARE CORRECT. THE SAID SURVEY WAS COMPLETED ON THE 10 DAY OF JULY 1974

[Signature] V. BARTELL, B.C.L.S.

SWORN BEFORE ME AT PRINCE GEORGE THIS 18 DAY OF July 1974

[Signature] A COMMISSIONER FOR TAKING AFFIDAVITS FOR BRITISH COLUMBIA

BEARINGS ARE ASTRONOMIC AND ARE DERIVED FROM PLAN 8698

- P Con ... STANDARD CONCRETE POST
- P.P. ... STANDARD PIPE POST
- C.I.P. ... STANDARD CAPPED IRON POST
- I.P. ... STANDARD IRON POST
- B.T. ... BEARING TREE
- O. ... DENOTING 'OLD'

THIS PLAN LIES WITHIN THE FRASER-FORT GEORGE REGIONAL DISTRICT.

CARMA DEVELOPERS LTD

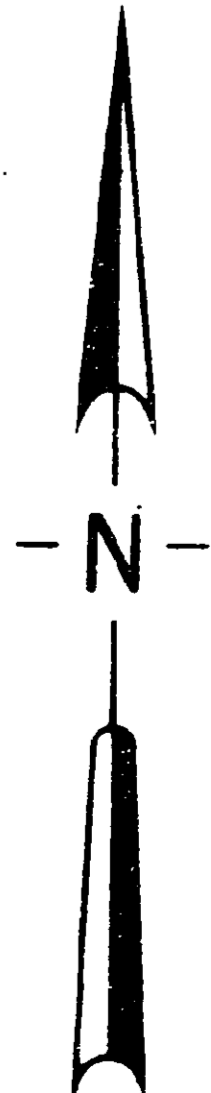
[Signature] Vice President

APPROVED UNDER THE LAND REGISTRY ACT THIS 12<sup>th</sup> DAY OF NOV 1975

[Signature] APPROVING OFFICER

[Signature] OWNED Mortgage

[Signature] WITNESS



McWILLIAM - WHYTE - GOBLE & ASSOCIATES B.C. LAND SURVEYORS KAMLOOPS - SMITHERS - PRINCE GEORGE

REF. NO.: 74171-1