

PLAN OF SUBDIVISION OF
LOT 87, PLAN 22200
DISTRICT LOT 754
CARIBOO DISTRICT - BRITISH COLUMBIA

SCALE: 1" = 50'

NOTE: Bearings are astronomic, derived from the
northwesterly boundary of Lot 85, Plan 22200.

LEGEND: • OIP denotes an old iron pin found.
• IP denotes an iron pin set.

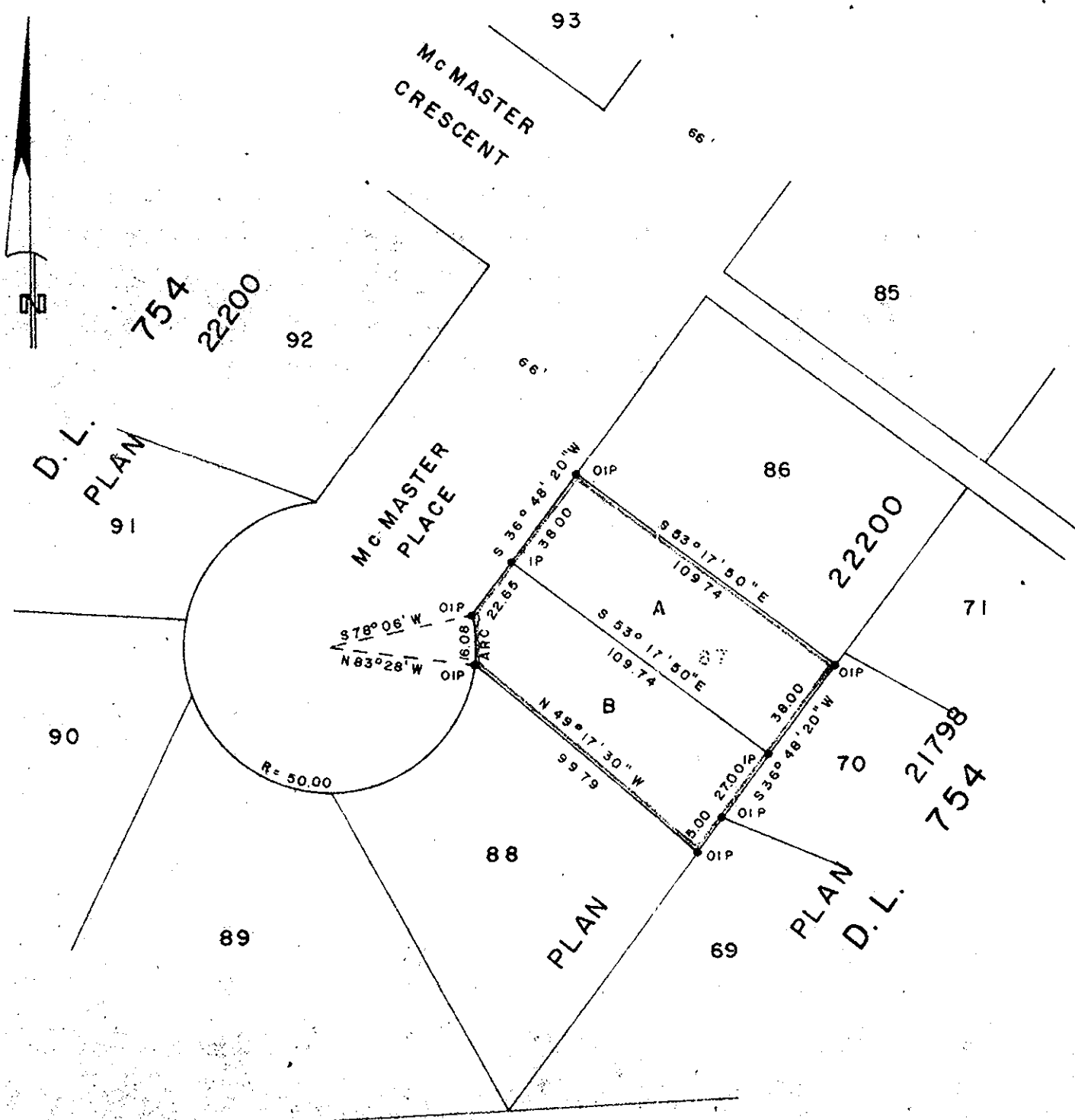
PLAN N^o _____

22475

Deposited in the Land Registry
Office at Prince George, B.C. this
16 day of Jan., 1976

E. T. Schooney
Registrar

K 30



PLAN 9902 - D.L. 2013

I, DONALD A. DUFFY of the City of Prince George,
a British Columbia Land Surveyor, make oath and say
that I was present at and did personally superintend
the survey represented by this plan and that the survey
and plan are correct. The said survey was completed
on the 21 day of Nov., 1975

Sworn before me this 2 day of DEC., 1975

A Commissioner for taking Affidavits
for British Columbia

HEIGHTS LAND DEVELOPMENT
CO. LTD.

[Handwritten signature]

Approved under the Land Registry Act
this 19th day of DEC., 1975

C. E. Obit
Approving Officer, City of Prince George

This plan lies within the Fraser-Fort George
Regional District.

W. D. USHER & ASSOCIATES
LAND SURVEYORS
PRINCE GEORGE - B.C.
I.M. 27 7563