

PLAN N^o **22473**

Deposited in the Land Registry Office at Prince George, B.C. this 15 day of Jan, 1976

Registrar E.J. SCHOONBY

PLAN OF SUBDIVISION OF
LOT 1, PLAN 21803 & PART OF
NORTH 1/2 OF NORTH 1/2 OF
S.E. 1/4 DISTRICT LOT 2425
CARIBOO DISTRICT—BRITISH COLUMBIA

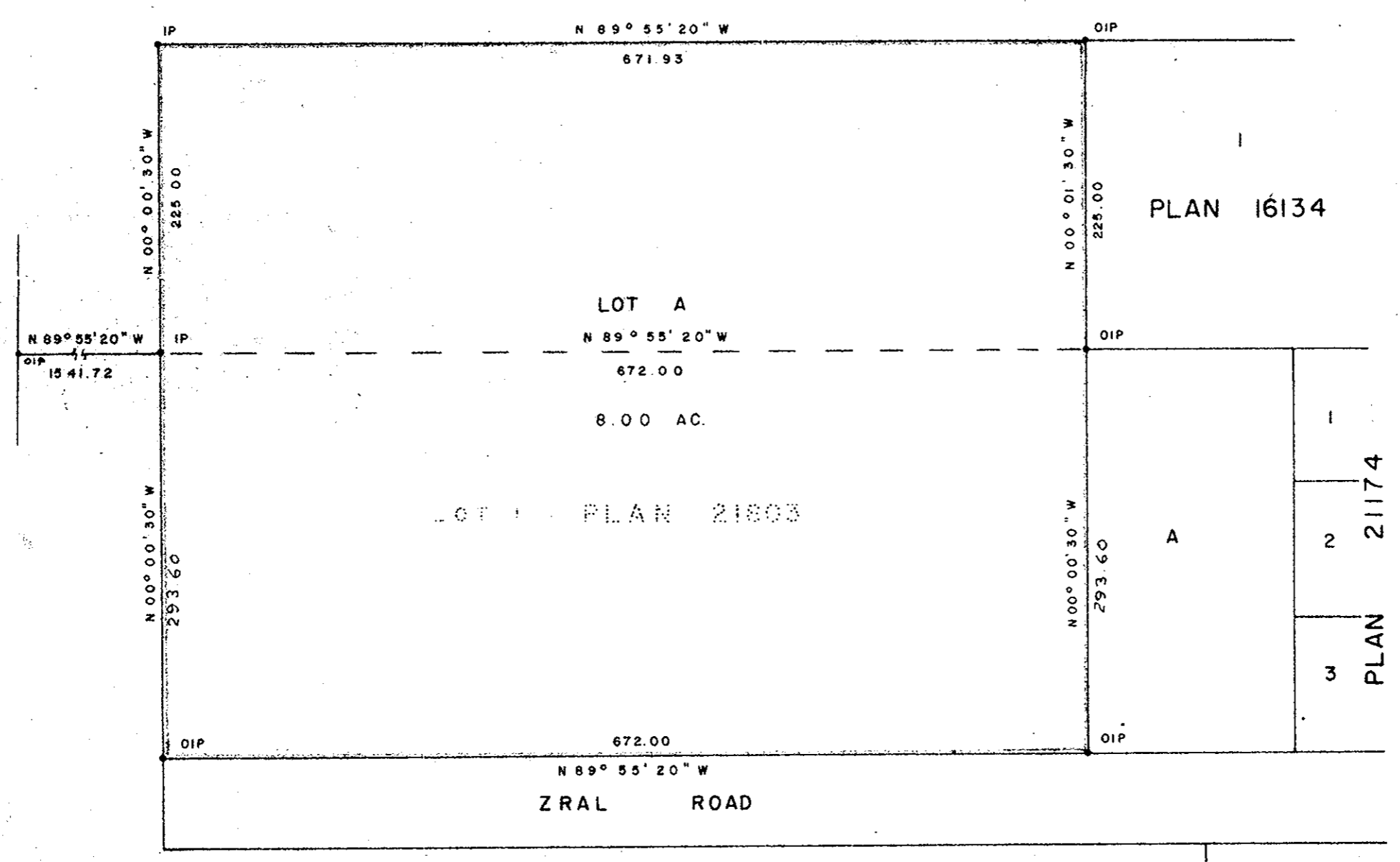
SCALE: 1" = 100'

NOTE: Bearings are astronomic, derived from the south boundary of Lot 1, Plan 21803.

LEGEND: •OIP denotes an old iron pin found.
•IP denotes an iron pin set.

N. 1/2 OF N. 1/2 OF S.E. 1/4 D.L. 2425

AREA REQ'D = 3.47 AC



S. 1/2 OF N. 1/2 OF S.E. 1/4 D.L. 2425

I, DONALD A. DUFFY of the City of Prince George, a British Columbia Land Surveyor, make oath and say that I was present at and did personally superintend the survey represented by this plan and that the survey and plan are correct. The said survey was completed on the 22 day of DEC., 1975.

[Signature]
B.C.L.S.

Sworn before me this 22 day of DEC, 1975.

[Signature]
A Commissioner for taking Affidavits for British Columbia.

BOARD OF SCHOOL TRUSTEES OF
SCHOOL DISTRICT N^o 57

[Signature]
CHAIRMAN
[Signature]
SECY-TREAS.

Approved under the Land Registry Act this 24 day of December, 1975

[Signature]
Approving Officer, City of Prince George.

This plan lies within the Fraser-Fort George Regional District.

W. D. USHER & ASSOCIATES
LAND SURVEYORS
PRINCE GEORGE — B.C.
IL 63 6326 B