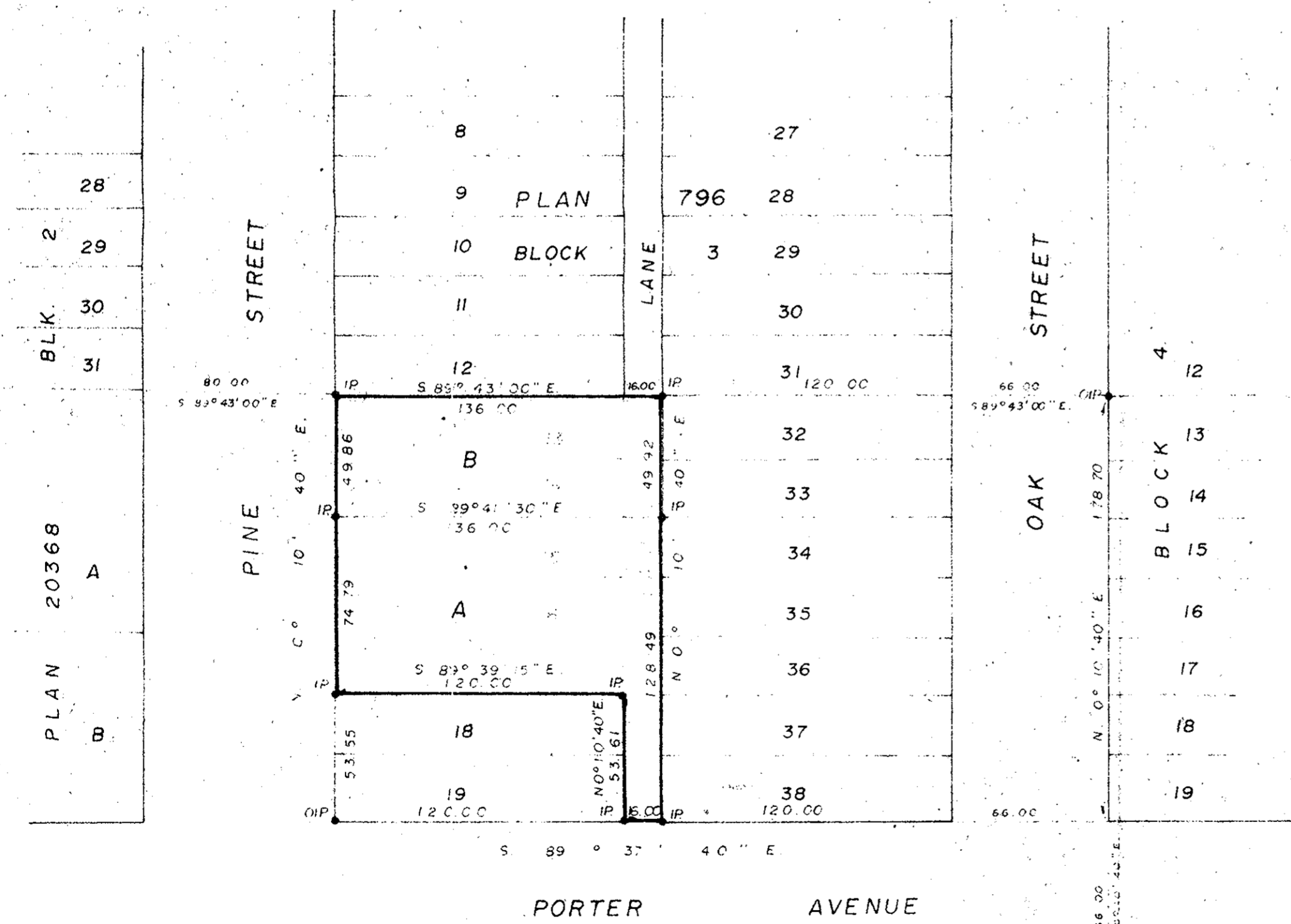


PLAN No 22466  
 Deposited in the Land Registry Office at  
 Prince George on the 12 day of Jan. 1976

E. I. Schooner  
 Registrar

PLAN of SUBDIVISION of  
 LOTS 13 to 17 INCLUSIVE, PLAN 796, and  
 CLOSED LANE ADJACENT TO LOTS 13 to 19 INCLUSIVE,  
 BLOCK 3, PLAN 796, D.L. 932, CARIBOO DISTRICT.  
 Scale 1" = 50'



- Bearings are astronomic and are derived from  
 South Boundary Block 3 Plan 796 shown as  
 S. 89° 37' 40" E on Plan 18960.
- Rcon ..... Standard Concrete Post
  - P.Rock ..... Standard Rock Post
  - PP ..... Standard Pipe Post
  - I.P. .... Standard Iron Post
  - P ..... Wooden Post
  - L.P. .... Lead Plug
  - ..... Denoting "Old"
  - WT ..... Denoting "Witness"
  - CIP ..... Capped Iron Post

I, D. Keown of the City of Prince George,  
 British Columbia Land Surveyor, make oath and  
 say that I was present at and did personally  
 superintend the survey represented by this  
 plan and that the survey and plan are correct.  
 The said survey was completed on  
 the 8<sup>th</sup> day of October, 1975.

*D. Keown*

Sworn before me at Prince George,  
 this 2<sup>nd</sup> day of October, 1975.

*[Signature]*  
 A commissioner for taking affidavits  
 for British Columbia.

*[Signature]*  
 Approving Officer

Owner *W. Helmreich*

Witness *D. Keown*

Approved under the Land Registry Act  
 on the 15<sup>th</sup> day of OCT. 1975

This plan lies within the Fraser, Fort  
 George Regional District.

McWilliam-Whyte-Gable & Associates  
 B.C. LAND SURVEYORS  
 PRINCE GEORGE | SMITHERS | KAMLOOPS  
 REF No: 75173