

PLAN OF SUBDIVISION OF  
PART OF PARCEL D (E666) OF  
DISTRICT LOT 953,  
CARIBOO DISTRICT.

Scale : 1" = 200'

PLAN No 22461

Deposited in the Land Registry Office at  
on the day of 19

Registrar

REM. D.L. 953

A = 023603 585

1440 C Central  
[Signature]

PARCEL D  
(E.666)  
OF D.L. 953

LOT 1  
36.91 Ac.

Bearings are astronomic and are derived from  
N Bdy NW 1/4 D.L. 954, shown as S.89°58"E  
on Plan 15474.

- P.con. .... Standard Concrete Post.
- P.Rock .... Standard Rock Post.
- P.P. .... Standard Pipe Post.
- I.P. .... Standard Iron Post.
- P. .... Wooden Post.
- L.P. .... Lead Plug.
- .... Denoting "Old"
- WT. .... Denoting "Witness"
- CIP. .... Capped Iron Post

I, V. Barteil, of the City of Prince George,  
British Columbia Land Surveyor, make oath and  
say that I was present at and did personally  
superintend the survey represented by this  
plan and that the survey and plan are correct.  
The said survey was completed on  
the 3 day of November, 1975.

[Signature]

Sworn before me at Prince George, B.C.  
this 3 day of November, 1975.

[Signature]  
A commissioner for taking affidavits  
for British Columbia.

Approved under the Land Registry Act  
on the day of 19

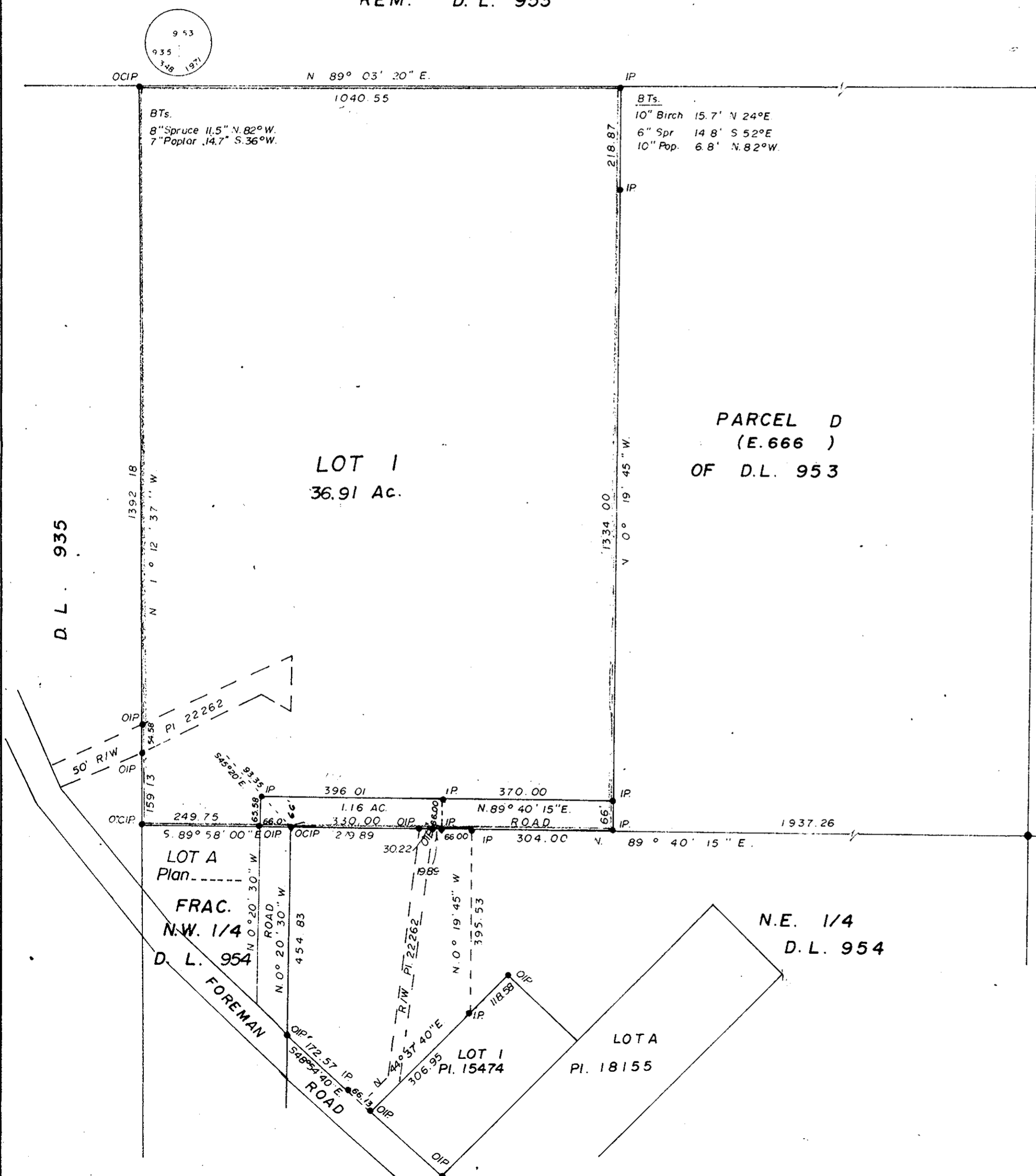
Approving Officer

Owner

Witness

This plan lies within the Fraser-Fort  
George Regional District.

McWilliam—Whyte—Goble & Associates  
B.C. LAND SURVEYORS  
PRINCE GEORGE | SMITHERS | KAMLOOPS  
REF No: 74171-2



1958  
953 950  
954 957  
318