

A-26

PLAN OF RIGHT-OF-WAY THROUGH
 LOTS 20, 21, 22, 23, 40, 41, 42 & 43, PLAN 22374
 DISTRICT LOT 754
 CARIBOO DISTRICT - BRITISH COLUMBIA

SCALE: 1" = 40'

NOTE: Bearings are astronomic, derived from the west boundary of Lot 22, Plan 22374.

LEGEND: •OIP denotes an old iron pin found.

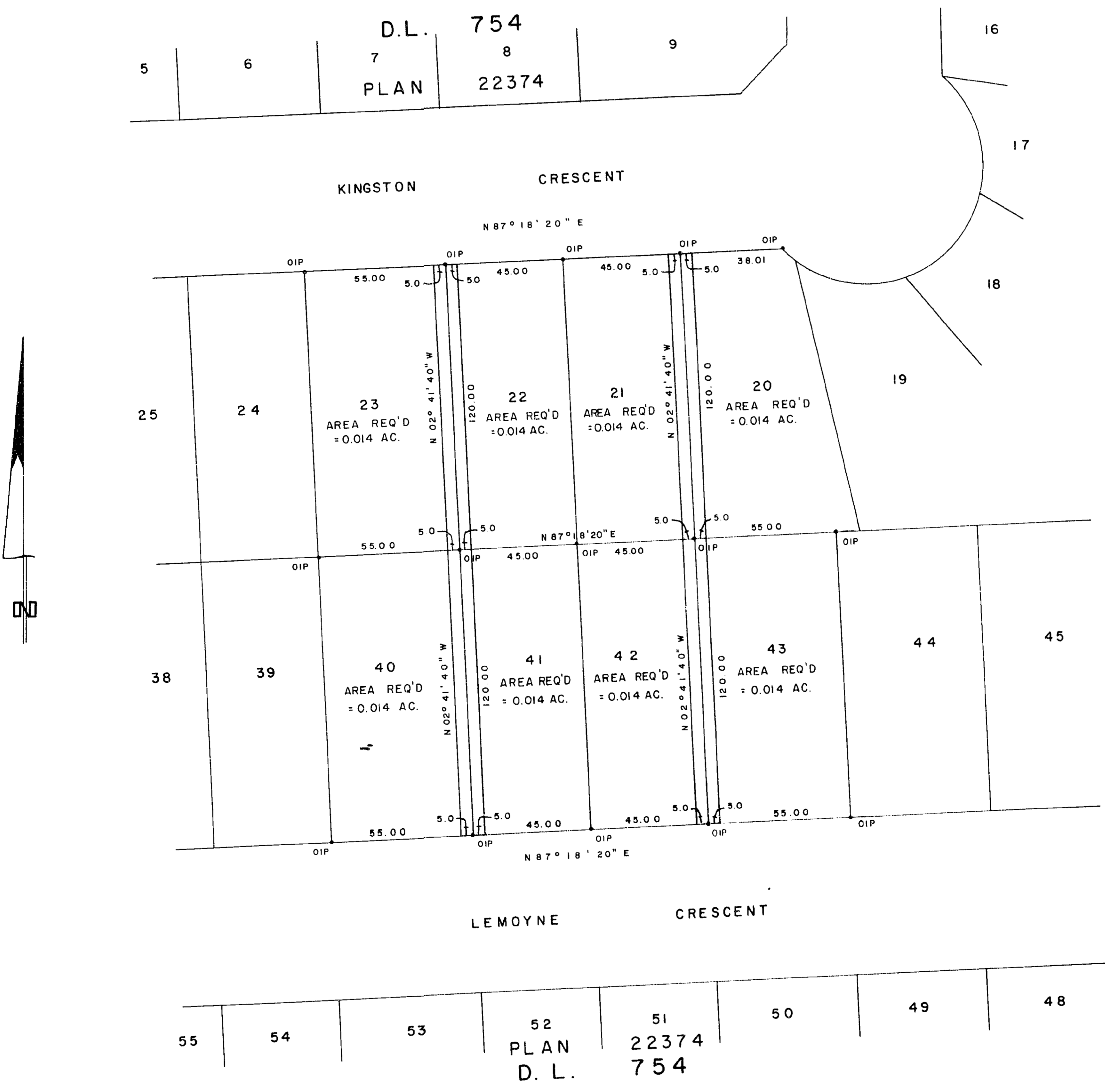
PLAN N^o 22432

Deposited in the Land Registry Office at Prince George, B.C. this 15 day of Dec., 1975

E.T. SCHOOLEY
 Registrar

Per d

BOOK OF REFERENCE	
PARCEL	AREA REQ'D
LOT 20, PLAN 22374, D.L. 754	0.014 AC.
LOT 21, PLAN 22374, D.L. 754	0.014 AC.
LOT 22, PLAN 22374, D.L. 754	0.014 AC.
LOT 23, PLAN 22374, D.L. 754	0.014 AC.
LOT 40, PLAN 22374, D.L. 754	0.014 AC.
LOT 41, PLAN 22374, D.L. 754	0.014 AC.
LOT 42, PLAN 22374, D.L. 754	0.014 AC.
LOT 43, PLAN 22374, D.L. 754	0.014 AC.



I, DONALD A. DUFFY of the City of Prince George, a British Columbia Land Surveyor, make oath and say that I was present at and did personally superintend the survey represented by this plan and that the survey and plan are correct. The said survey was completed on the 12th day of September, 1975.

[Signature]
 B.C.L.S.

Sworn before me this 8 day of Dec., 1975

A Commissioner for taking Affidavits for British Columbia.

This plan lies within the Fraser-Fort George Regional District.

W.D. USHER & ASSOCIATES
 LAND SURVEYORS
 PRINCE GEORGE - BC